



EIS to accompany draft Storm Bay North MFDP

Appendix 8

Lease Water Quality Monitoring Data

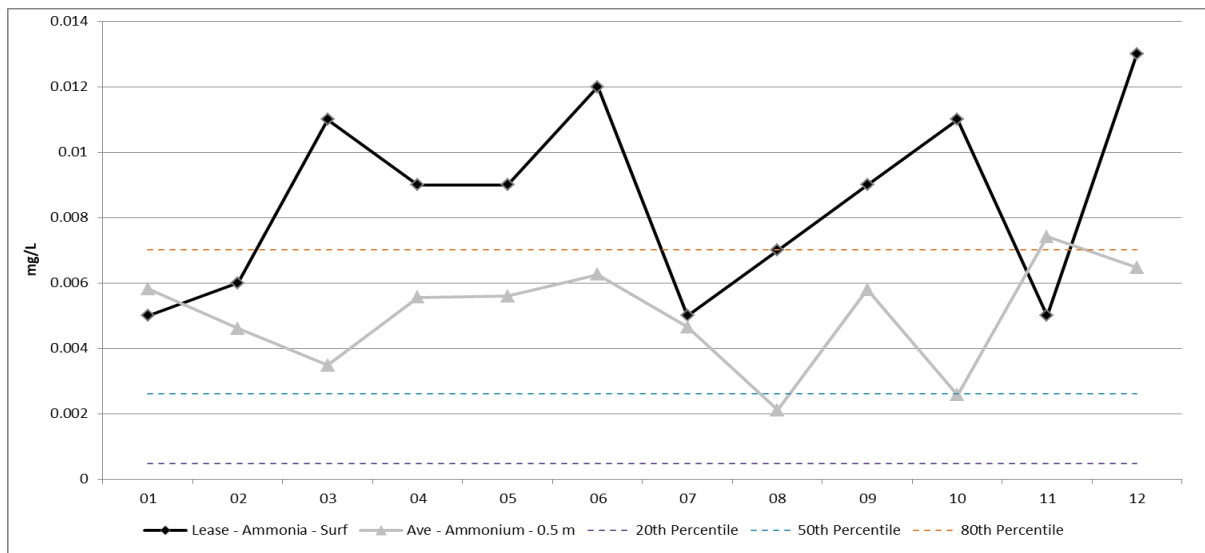
Lease Water Quality Monitoring Data

Historical data from Crawford et al., (2011) and Swadling et al., (2016) was used for comparison to the lease site water quality monitoring commenced in October 2016.

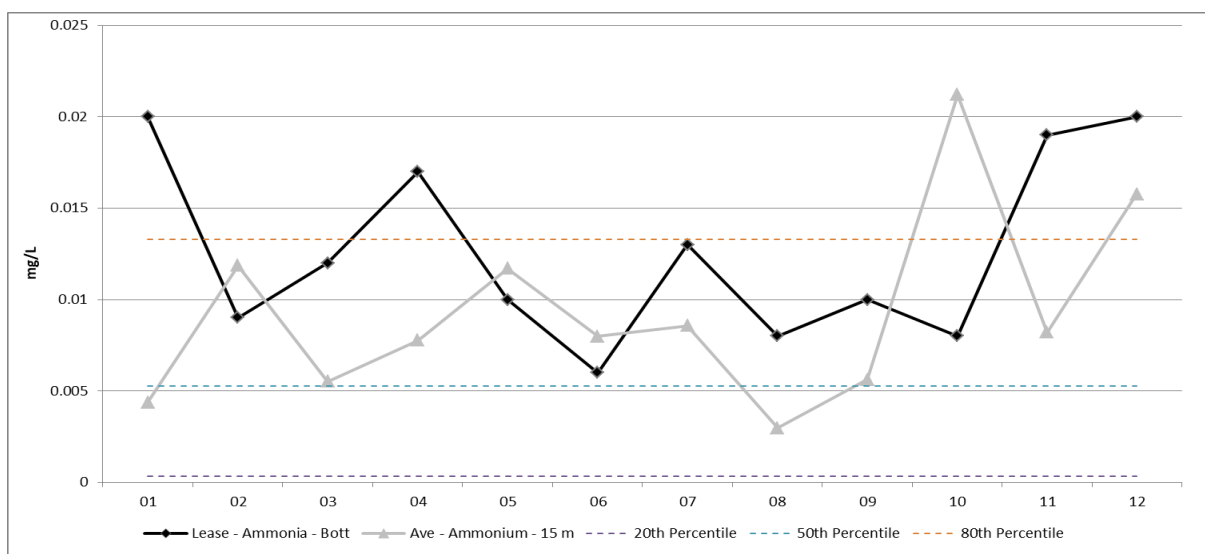
All historical site data (SBI,2,5,6,9) was averaged by month and 20th/50th/80th percentile lines added (from all data, not averages). This was converted from uM to mg/L where applicable. Note the molecular mass of Phosphate was used to convert from uM to mg/L as ~99% of the dissolved reactive P (from lease site data) is in the form of phosphate. Lease site data was then overlaid to allow a comparison, with the graphs provided below.

Lease site water quality monitoring is being undertaken to align with future BEMP requirements.

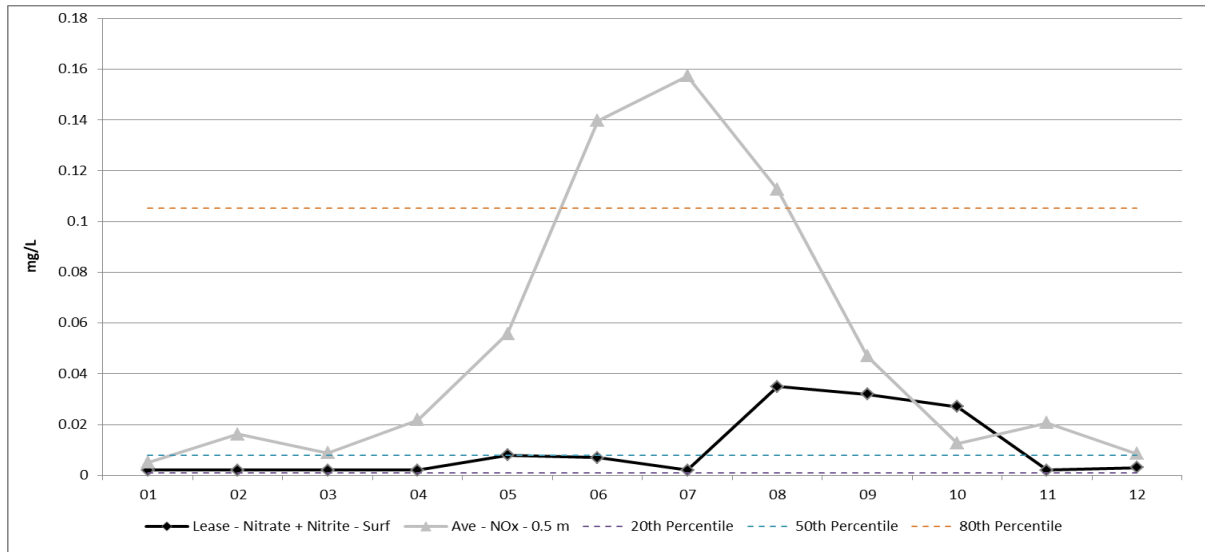
Ammonia/Ammonium Surface



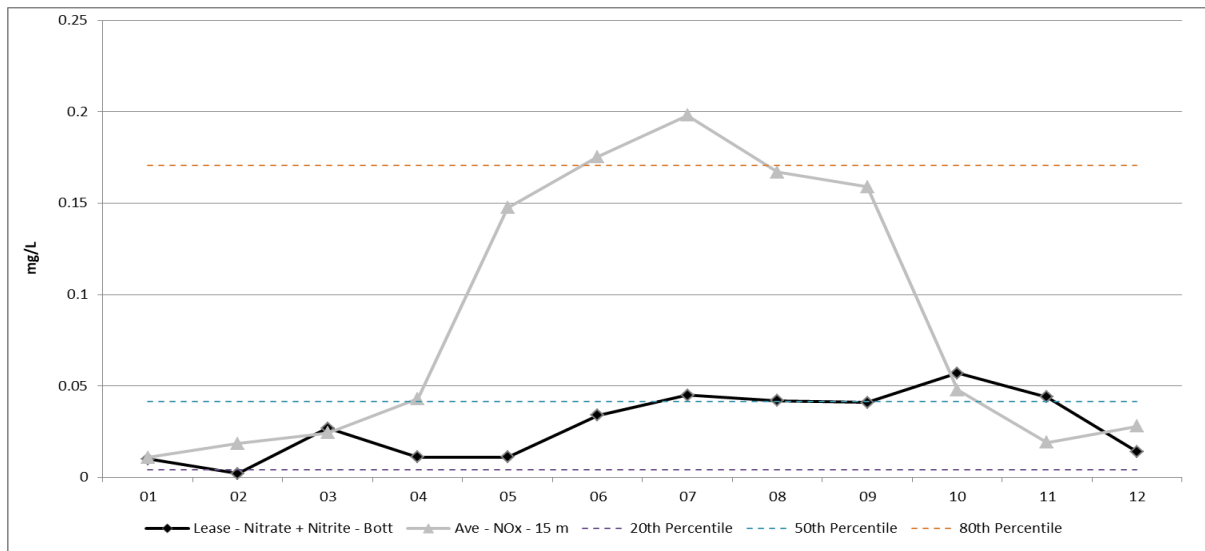
Ammonia/Ammonium Bottom



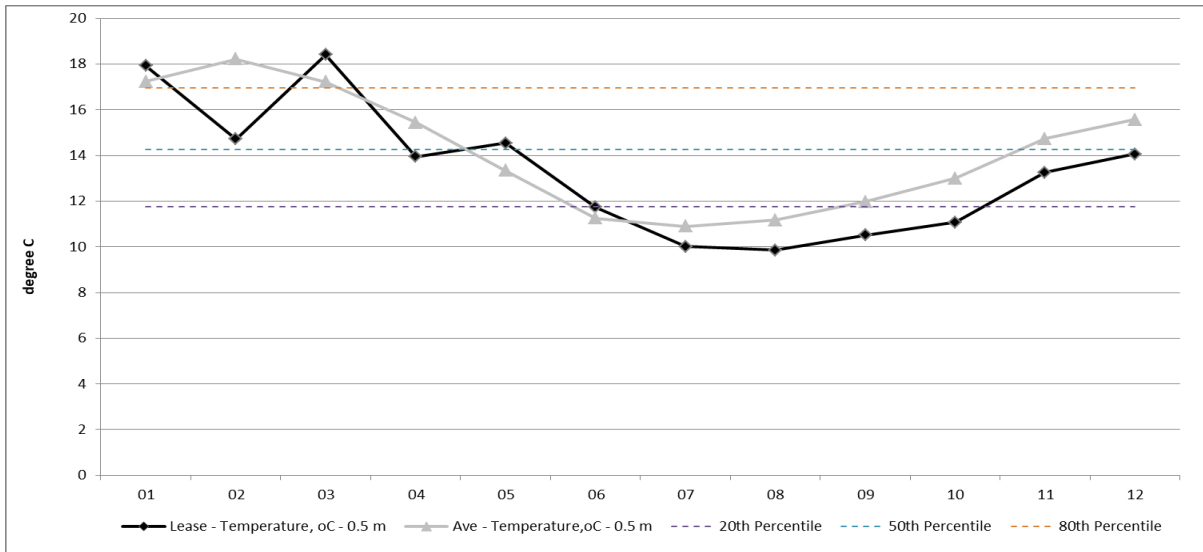
NOx Surface



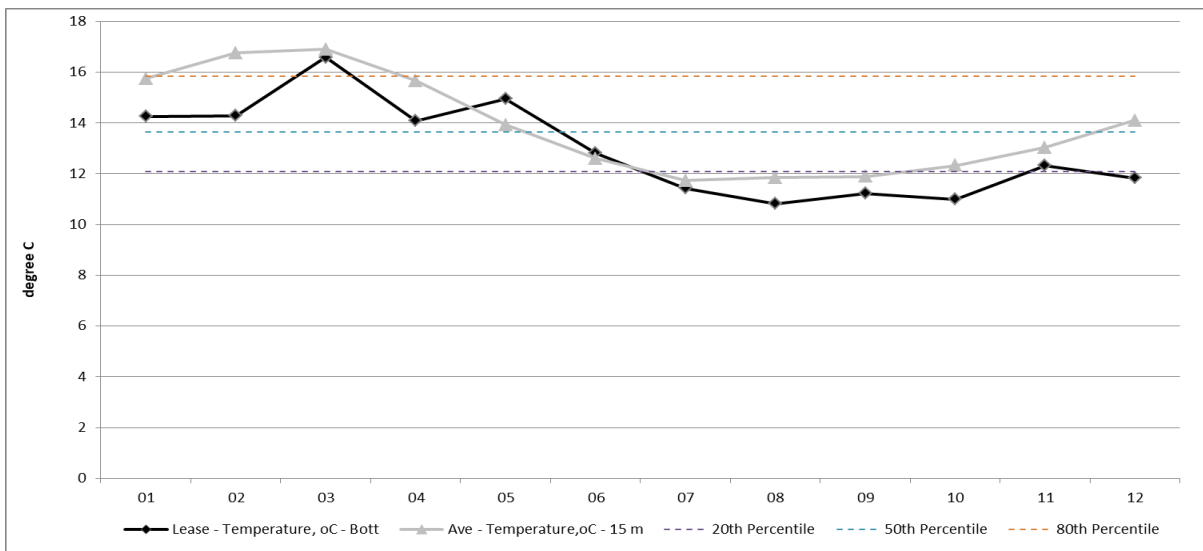
NOx Bottom



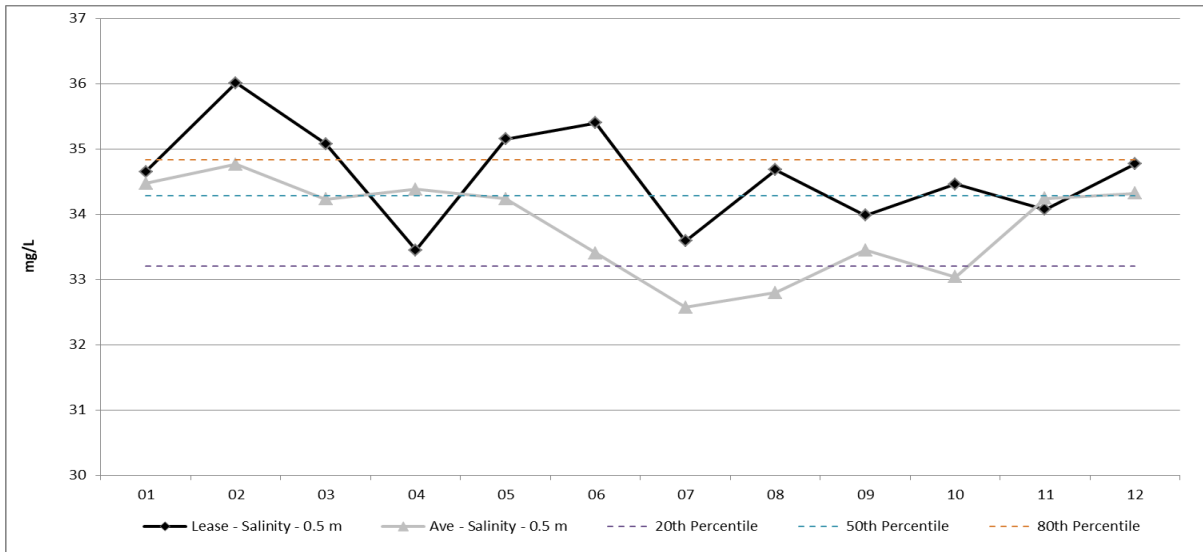
Temperature Surface



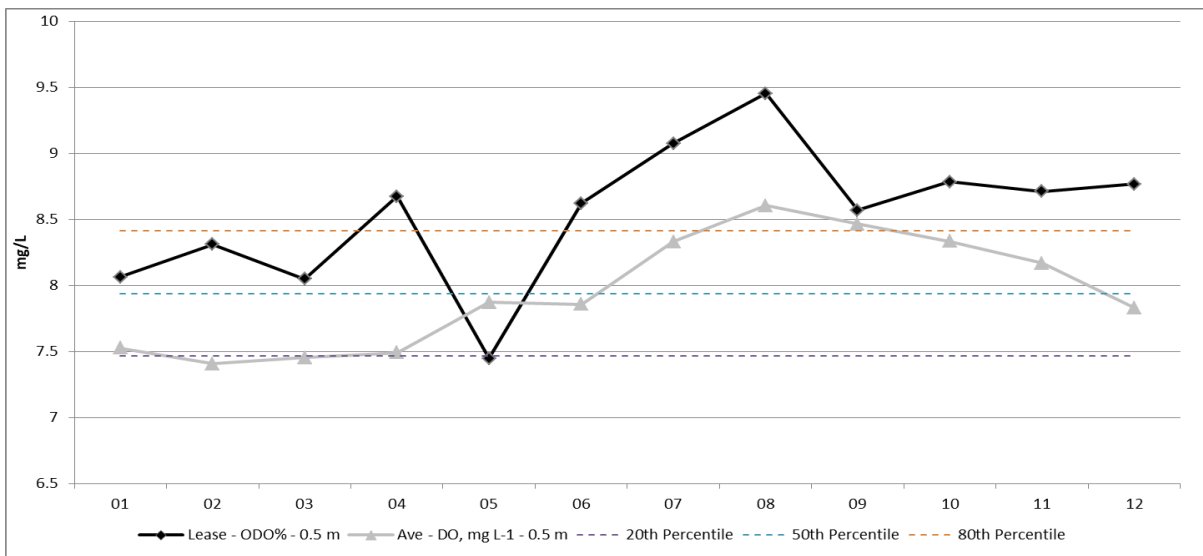
Temperature Bottom



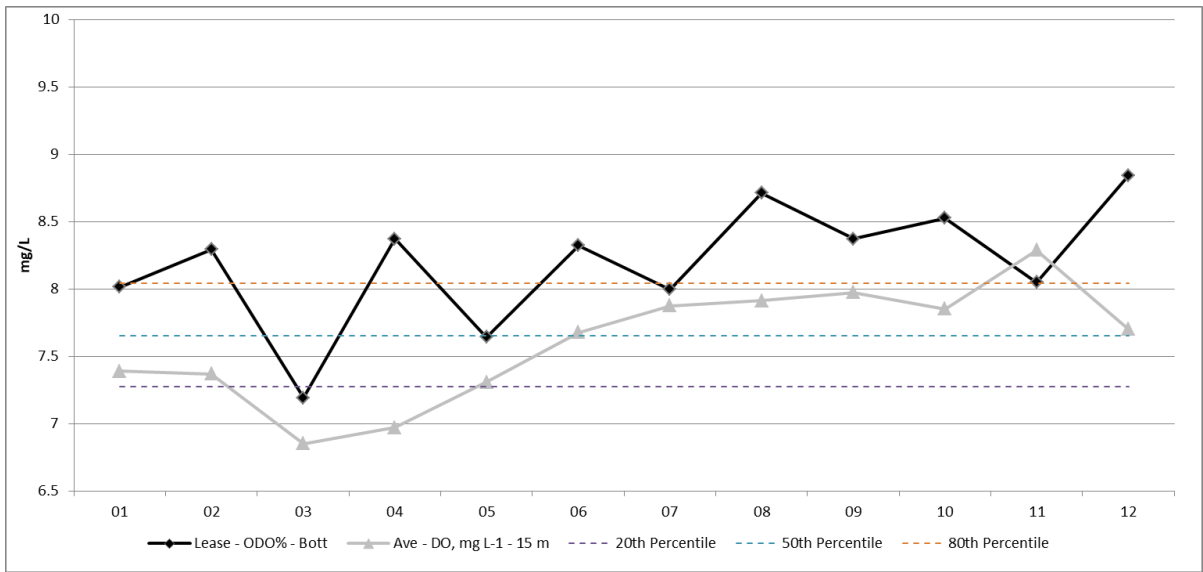
Salinity Surface



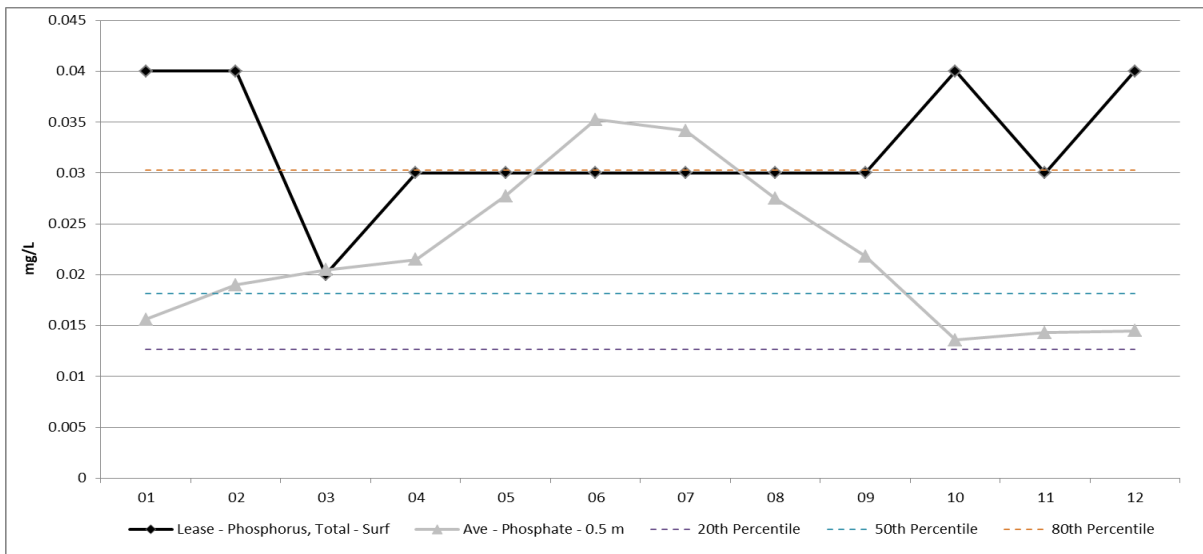
DO Surface



DO Bottom



Phosphorus/Phosphate Surface



Phosphorus/Phosphate Bottom

