

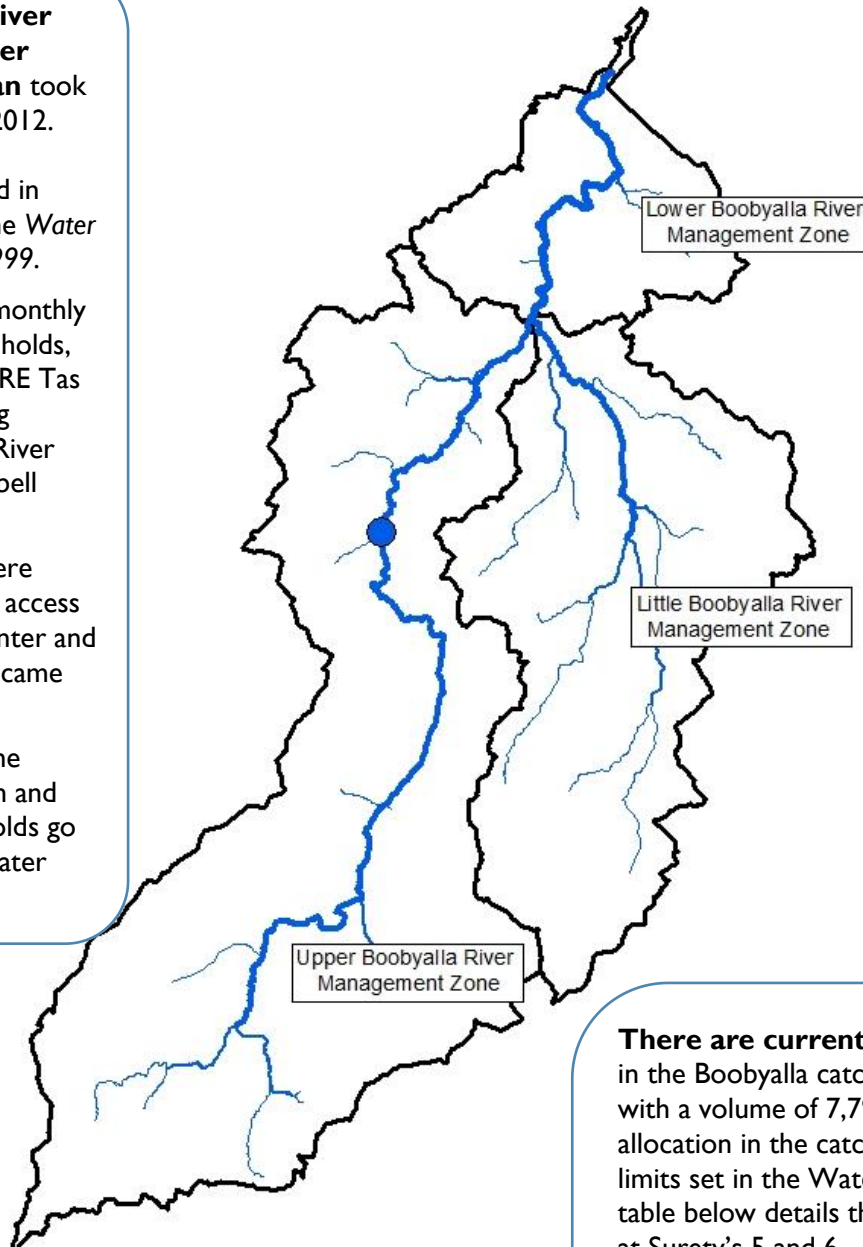
BOOBYALLA RIVER CATCHMENT ANNUAL REPORT 2024/25

The Boobyalla River Catchment Water Management Plan took effect in October 2012. The Plan is a legal document prepared in accordance with the *Water Management Act 1999*.

The Plan sets out monthly cease to take thresholds, measured at the NRE Tas stream flow gauging station: Boobyalla River upstream of Campbell Creek.

CTT thresholds were reviewed to assess access to water during winter and revised thresholds came into effect in 2017.

For full details of the current Water Plan and the revised thresholds go to the NRE Tas Water website.



The Boobyalla River catchment is located in the north-east of Tasmania and flows north approximately 43 km from Mount Horror to Ringarooma Bay. The catchment covers a total area of 298 km².

The river system is unregulated with a largely natural flow regime that shows a strong seasonal flow pattern (wetter in winter and drier in summer). The average annual water yield is 23,692 ML/year based on the historical flow record at the Boobyalla River upstream Campbell Creek stream flow gauge.

There are currently 89 water allocations in the Boobyalla catchment under Surety's 5-6 with a volume of 7,799 ML. The volume of allocation in the catchment has reached the limits set in the Water Management Plan. The table below details the consumptive allocations at Surety's 5 and 6

CONSUMPTIVE WATER ALLOCATION

Surety Level	Summer Vol. (ML)	Winter Vol. (ML)	Overall Vol. (ML)
S 5	657	5,060	5,717
S 6	0	2,082	2,082
Total	657	7,142	7,799

CATCHMENT LAND USE

Approximately 19% of the catchment is under production native forests and plantation forestry. A further 28% is used for agricultural purposes with the remaining area supporting a diversity of land uses including mining, and conservation land. No townships sit within the Boobyalla catchment with the town of Winnaleah just to the south of the surface water catchment boundary. The land use layer shown here uses 2019 data.

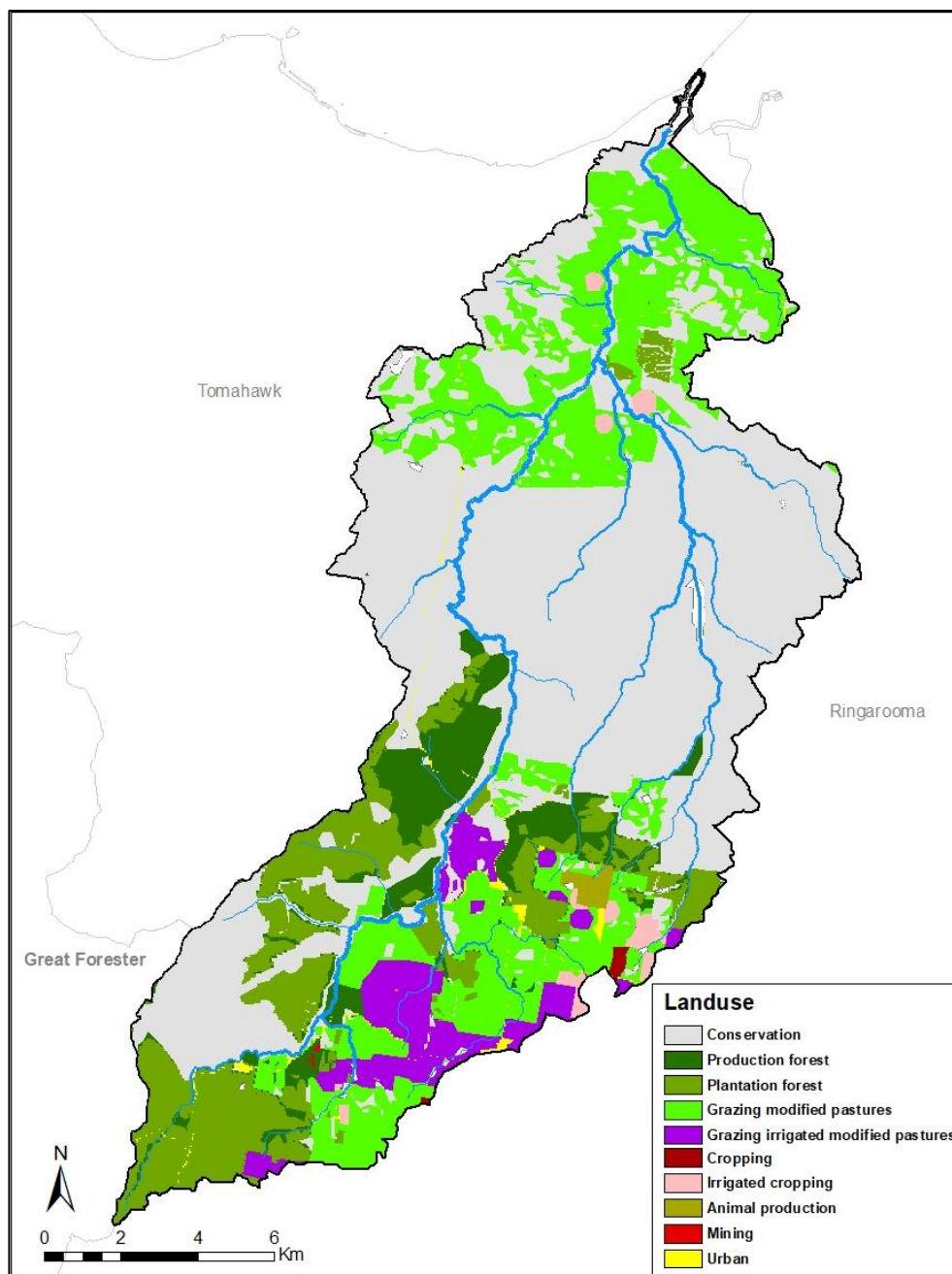


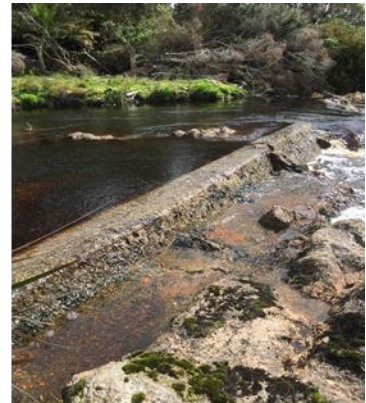
Figure 1. Boobyalla River catchment land use

HYDROLOGY SUMMARY

The following pages show plots of long-term streamflow (full period of available record), short term flow and rainfall (last 5 water years), and last year's flow, rainfall and restriction data, split into winter (May 2024 – November 2024) and summer (December 2024 – April 2025) seasons.

Over the period from May 2024 to April 2025:

- Annual yield was average, with annual rainfall average at the Bureau's (BoM) Tomahawk at Carisbrooke gauge.
- A number of days of water restrictions occurred during the first half of winter.
- The late winter and summer period saw a return to good flows, with only 2 days of full restriction over summer.



For further information contact your local **Regional Water Management Officer** at the **Department of Natural Resources and Environment Tasmania:**

Phone: 1300 368 550

Email: Water.Operations@nre.tas.gov.au

nre.tas.gov.au/water

August 2025

Full flow record, 1981 - 2025

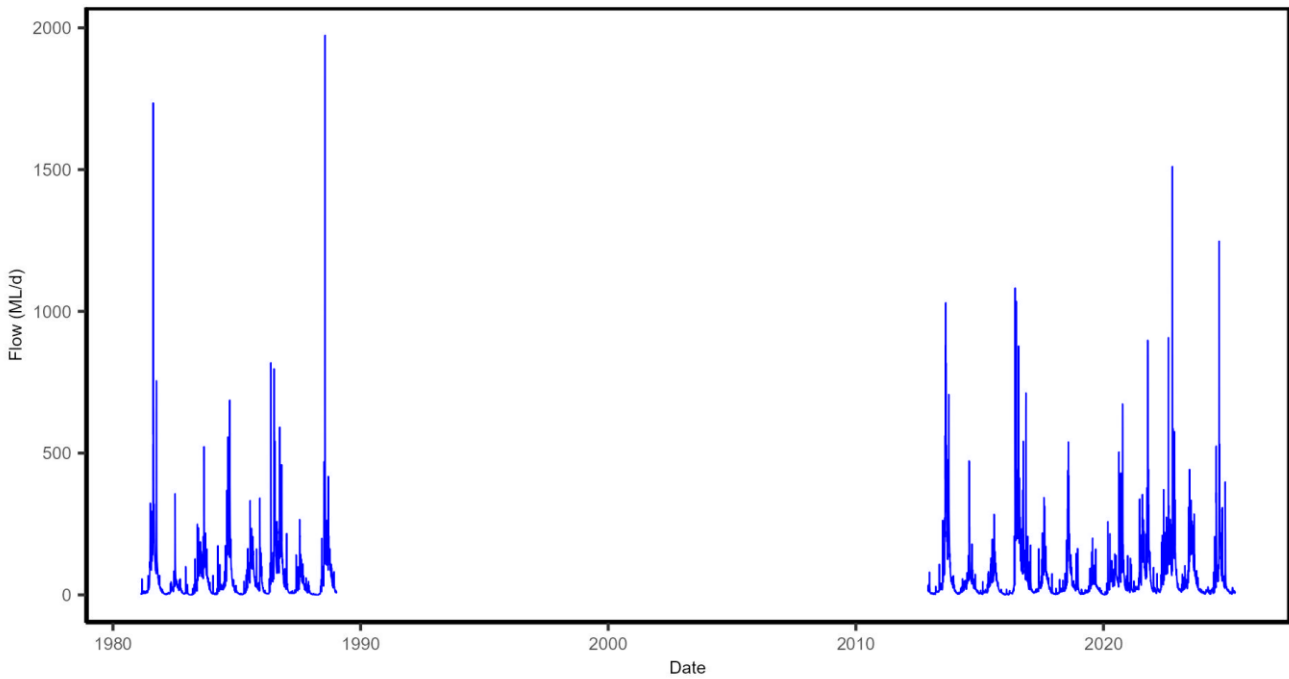


Figure 3. Mean daily flow at the Boobyalla River upstream Campbell Creek streamflow gauging station, whole of record.

Full record of yields in water years 1981 - 2024

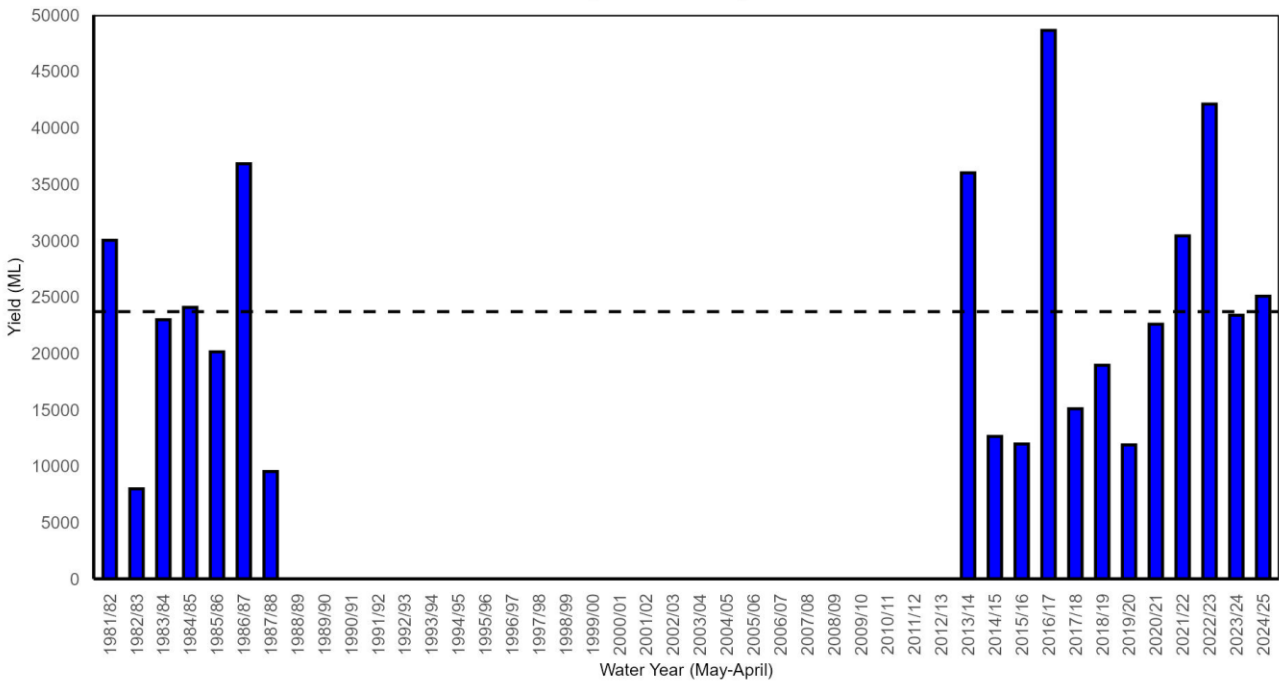


Figure 4. Yields in the Boobyalla River upstream Campbell Creek streamflow gauging station. Water years with <95% of the daily flow record available are excluded. The long-term mean yield is shown as the dashed horizontal black line (23,692 ML).

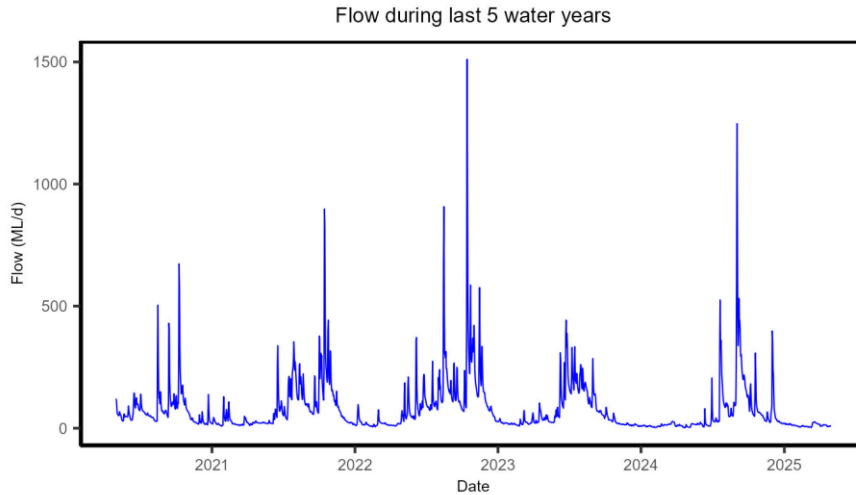


Figure 5. Mean daily flow in the Boobyalla River upstream Campbell Creek streamflow gauging station for the last five years.

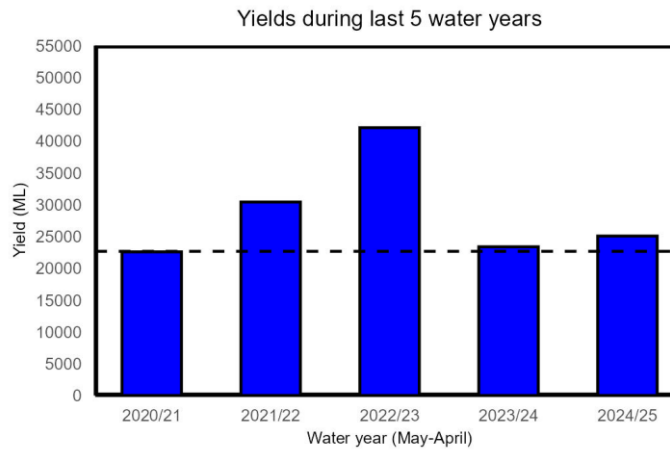


Figure 6. Yields in the Boobyalla River upstream Campbell Creek streamflow gauging station for the last five years. The long-term mean yield is shown as the dashed horizontal black line (22,661 ML).

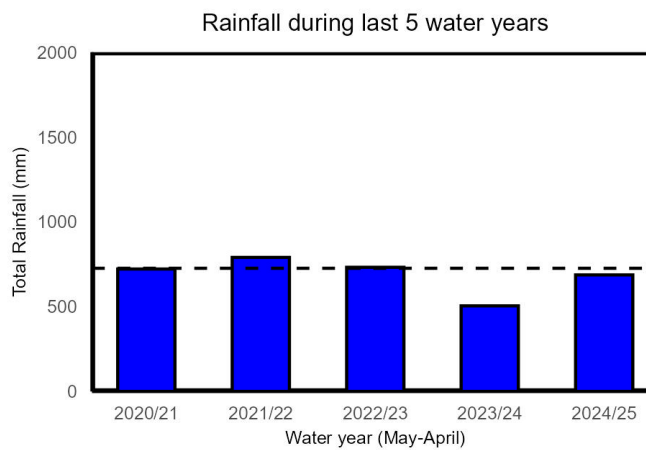


Figure 7. Total rainfall at the Tomahawk (Carisbrooke) BoM weather station during the last five water years. The long-term (1965-2025) mean total rainfall (727 mm) is shown as the black horizontal dashed line.

Rainfall, low flows and restriction periods during winter 2024/2025

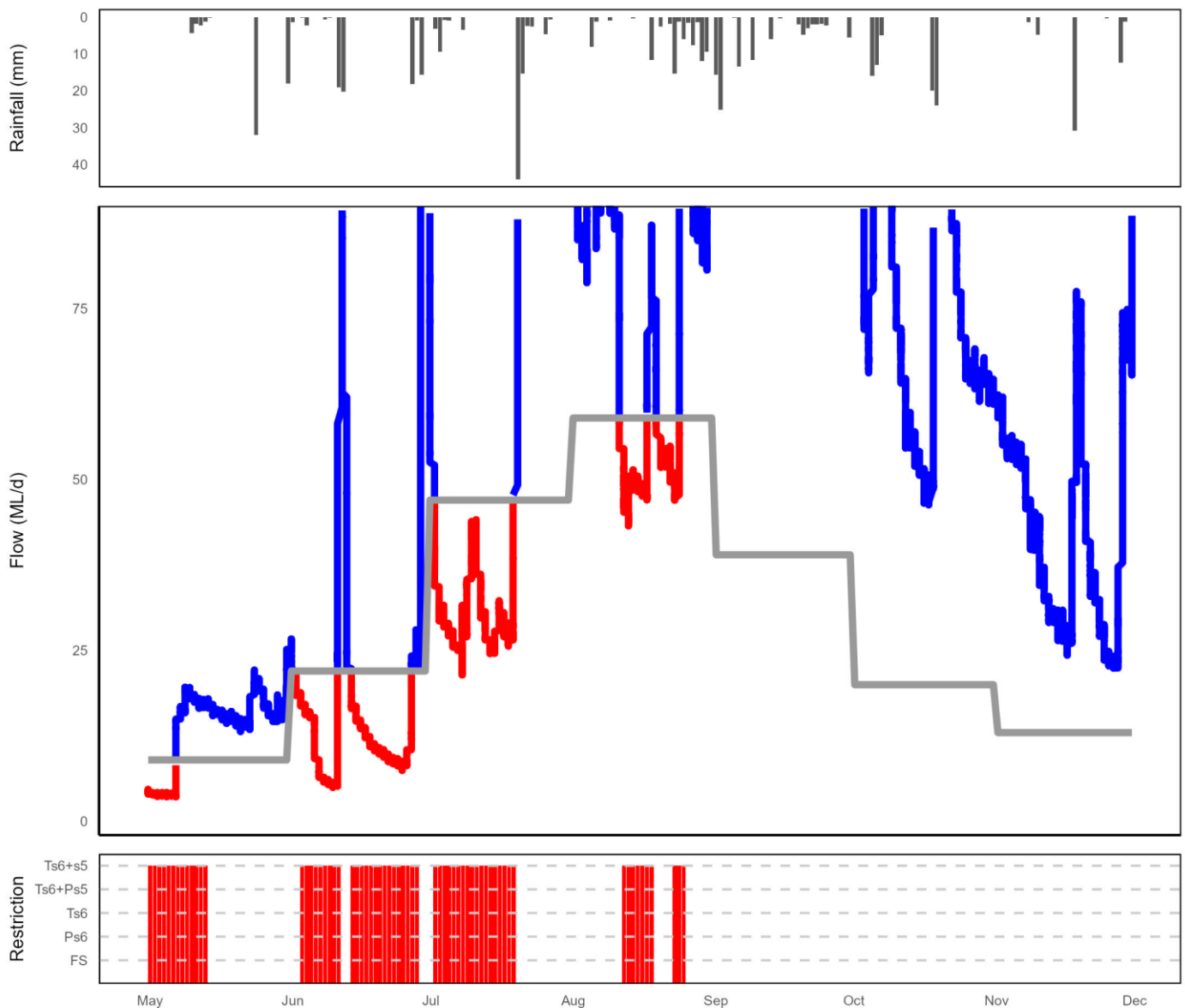


Figure 8. Summary of rainfall, low flows and restrictions in the Boobyalla River catchment during winter (May-November) 2024.
 Top plot: daily rainfall (Tomahawk (Carisbrooke) BoM site).
 Middle plot: instantaneous flow (<80 ML/d) Boobyalla River upstream Campbell Creek station (compliance flow site).
 Bottom plot: days when restrictions were in place.

NOTE: Refer to the last page for a 'legend' and description on how to interpret these plots

Table 1. Restriction levels and total days at each level for the winter period (214 days: May - November 2024).

Restriction Type	Days at restriction level in 2023/24	Days at restriction level in 2024/25
Total Surety 6 + Total Surety 5	0	65

Rainfall, low flows and restriction periods during summer 2024/2025

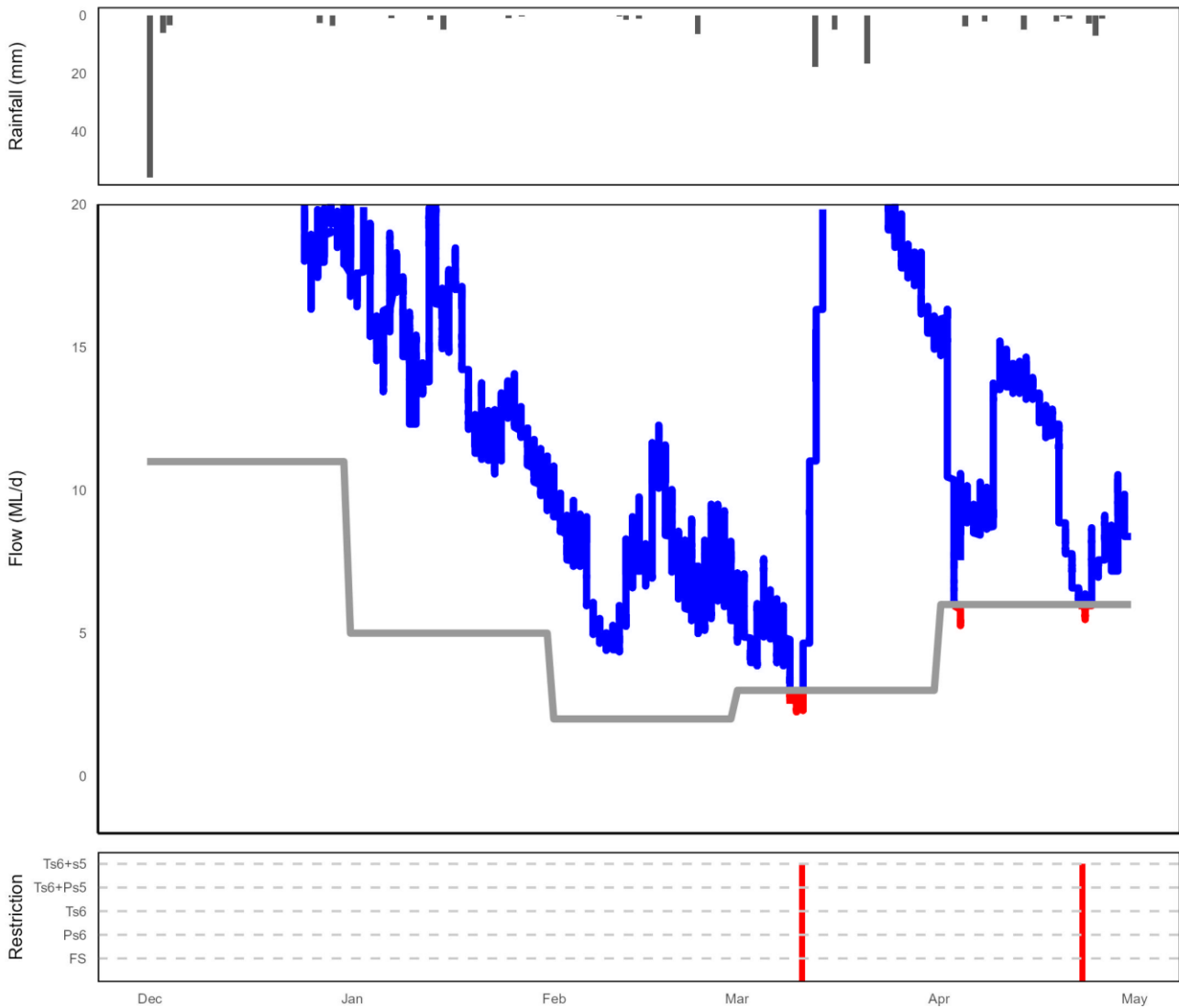


Figure 9. Summary of rainfall, low flows and restrictions in the Boobyalla River catchment during summer 2024/25 (Dec-April).
 Top plot: daily rainfall (Tomahawk (Carisbrooke) BoM site).
 Middle plot: instantaneous flow (<20 ML/d) Boobyalla River upstream Campbell Creek station (compliance flow site).
 Bottom plot: days when restrictions were in place.
NOTE: Refer to the last page for a 'legend' and description on how to interpret these plots

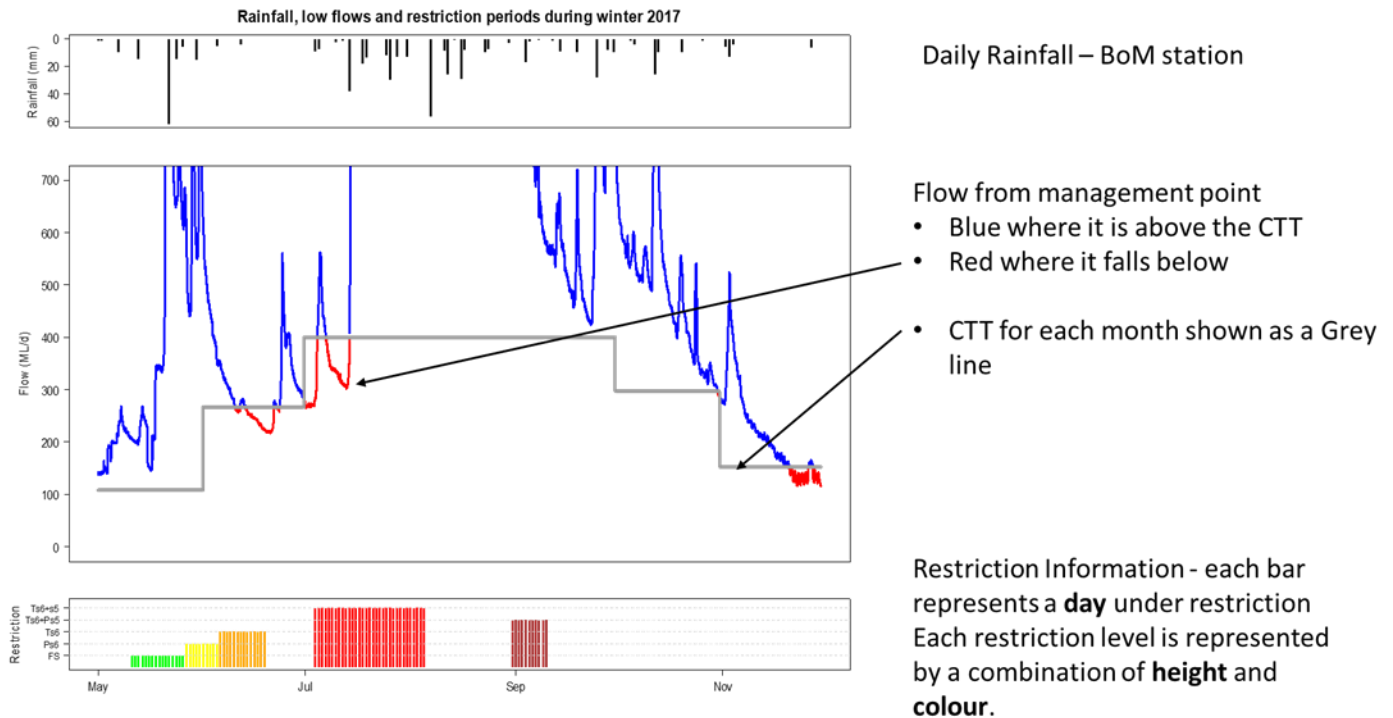
Table 2. Restriction levels and total days at each level for the summer period (152 days: Dec 2024 – April 2025).

Restriction Type	Days at restriction level in 2023/24	Days at restriction level in 2024/25
Total Surety 6 + Total Surety 5	14	2

EXAMPLE ONLY

Rainfall, flow and restriction plot legend

NOTE: This is a hypothetical example to assist in interpreting the plots in the main body of this document.



Flow Restriction definitions:

FS = flow sharing (only some catchments), shown in GREEN

Ps6 = partial surety 6 ban, shown in YELLOW

Ts6 = total surety 6 ban, shown in ORANGE

Ts6+Ps5 = total surety 6 and partial surety 5 ban, shown in BROWN

Ts6+s5 = total surety 5 and 6 ban, shown in RED

EXAMPLE ONLY

For further information contact your local Regional Water Management Officer
at the Department of Natural Resources and Environment Tasmania:

Phone: 1300 368 550

Email: Water.Operations@nre.tas.gov.au

nre.tas.gov.au/water

August 2025