

**LAND CAPABILITY SURVEY
TASMANIA**

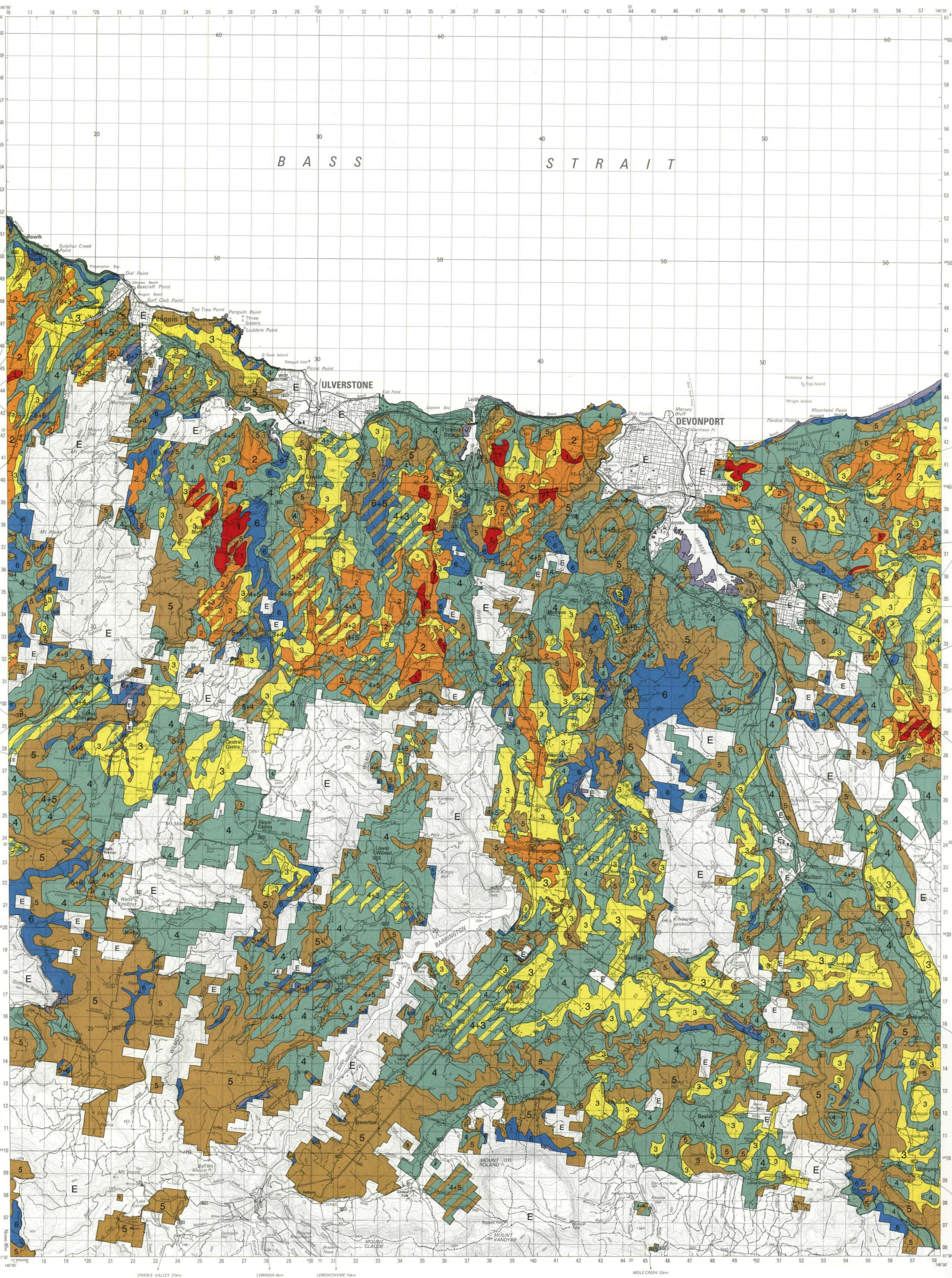
LAND CAPABILITY CLASSES

(based on the capability of land for long-term sustainable agricultural production)

TASMANIA 1:100 000
TOPOGRAPHIC SURVEY

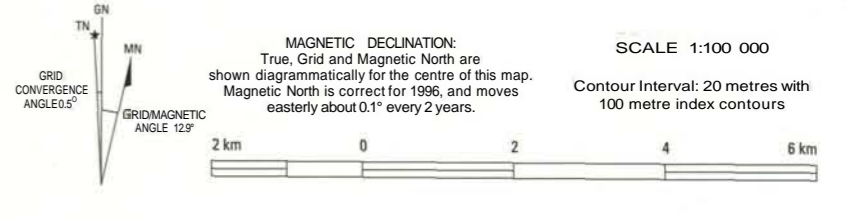
FORTH

SHEET 8115 EDITION 6 1996



- 1 CLASS 1**
Multiple use land with only minor limitations* to intensive cropping and grazing. It occurs on flat land with deep, well drained soils in a climate that favours a wide variety of crops. It is capable of being cropped eight to nine years out of ten in a rotation with pasture or equivalent.
- 2 CLASS 2**
Land suitable for intensive cropping and grazing. Limitations to use are slight and these are readily overcome by management and minor conservation practices. Limitations reduce the cropping phase to five to eight years out of ten in a rotation with pasture or equivalent and/or restrict the variety of crops that can be grown.
- 3 CLASS 3**
Land suitable for cropping and intensive grazing. Cropping phase is normally limited to two to five years out of ten in rotation with pasture or equivalent, and/or the variety of crops that can be grown is significantly more restricted than on Class 1 and 2 land. Soil conservation practices and sound management are required to overcome the moderate limitations to cropping use.
- 4 CLASS 4**
Land marginally suitable for cropping because of severe limitations which restrict the range of crops that can be grown and/or make major conservation treatment and careful management necessary. Cropping rotations should normally be restricted to one to two years out of ten in a rotation with pasture or equivalent. This land is well suited to intensive grazing.
- 5 CLASS 5**
Land with slight to moderate limitations to pastoral use. This land is unsuitable for cropping, although some areas on less severe slopes may be cultivated for pasture establishment or renewal. The effects of limitations on the grazing potential may be reduced by applying appropriate soil conservation measures and land management practices.
- 6 CLASS 6**
Land marginally suitable for grazing because of severe limitations. This land has low levels of production, high risk of erosion, low fertility or other limitations that severely restrict agricultural use.
- 7 CLASS 7**
Land with very severe to extreme limitations which make it unsuitable for agricultural use.
- 4+5 COMPLEXES**
For example, Classes 4+5, where Class 4 land is more dominant than Class 5 land. Due to the complexity at this scale of mapping the two classes have not been separately mapped.
- E EXCLUSION AREAS**
Land other than Private Freehold and Leased Crown Land, eg. State Forests, State Reserves and Conservation Areas.

*** LIMITATIONS**
In the above descriptions, limitations refer to physical factors or constraints which affect the versatility of the land and determine its capability for long-term sustainable agricultural production.
Different kinds of limitations are erosion hazard, slope, climate, flooding, poor drainage, stoniness, salinity and poor soil structure. Information on subclass boundaries is available from the DPIF's Land and Water Assessment Branch, Prospect Offices.

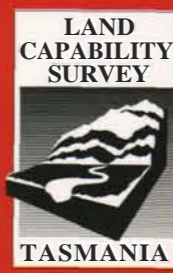


MAP USERS NOTE:
This map provides an appraisal of land capability based on landscape, soils, climate and agronomic factors. The land capability class boundaries have been delineated by field work and aerial photo-interpretation. This map is reliable only at the published scale and should not be enlarged. It should be used in conjunction with the accompanying land capability report, which gives further details on the interpretation and use of this map. Only Private Freehold and leased Crown land has been mapped.
The information on this map has been prepared by the Tasmanian Department of Primary Industry and Fisheries to assist in land use planning and management. The Crown in the right of the State of Tasmania does not accept responsibility for any loss or damage which may result to any person arising from reliance on all or any part of this information, whether or not that loss or damage has resulted from negligence or any other cause.

Fieldwork by R. Moreton, P. Pohlner and C. Grose 1996/97
Compiled by R. Moreton and C. Grose 1996/97
GIS and drafting work by P. Pohlner and M. Brown, 1997
Printed by Printing Authority of Tasmania, Hobart, 1997

Refer to this map as:
Moreton R. M. and Grose C. J. (1997) Land Capability Survey of Tasmania, Forth, 1:100 000 map.
Department of Primary Industry and Fisheries, Tasmania.
Accompanies report titled
"Land Capability Survey of Tasmania, Forth Report."
By R. M. Moreton and C. J. Grose, Department of Primary Industry and Fisheries, Tasmania 1997.

© Department of Primary Industry and Fisheries, Tasmania, 1997
Base map supplied by Land Information Services, Department of Environment and Land Management, Hobart, Tasmania.



FORTH

1:100 000

**LAND CAPABILITY SURVEY
of TASMANIA**

ABOUT THIS MAP
This map depicts an assessment of land capability at a scale of 1:100 000. It is part of a series of Land Capability Maps covering all the Private Freehold and Leased Crown land in Tasmania. The land capability information is shown over a topographic base. The classification system used to generate this map consists of seven classes based on the capability of the land for long-term sustainable agricultural production.

