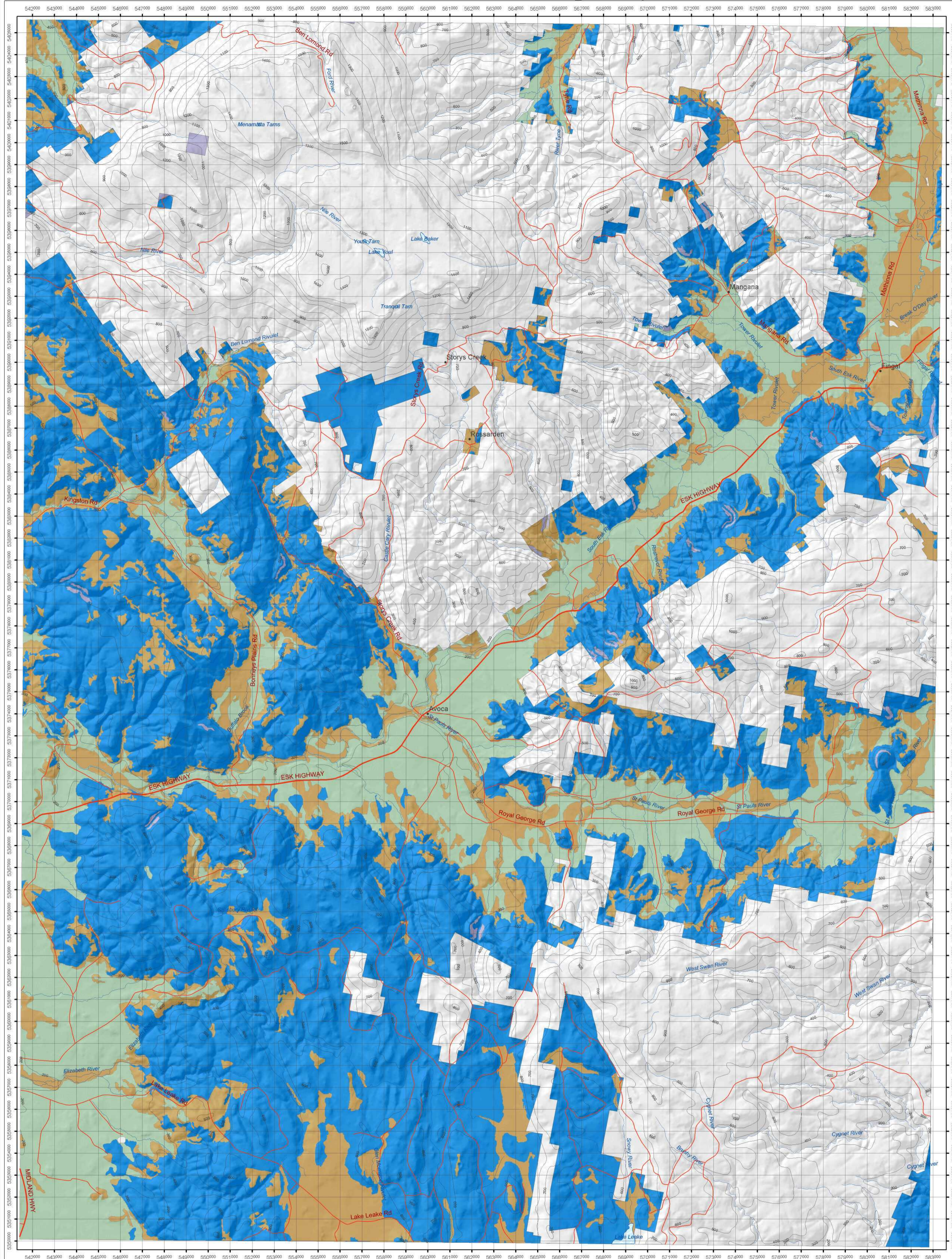


ST. PAULS - Modelled Land Capability Classes



LAND CAPABILITY CLASSIFICATION

- CLASS 1**
Land well suited to a wide range of intensive cropping and grazing activities. It occurs on flat land with deep, well drained soils, and in a climate that favours a wide variety of crops. While there are virtually no limitations to agricultural usage, reasonable management inputs need to be maintained to prevent degradation of the resource. In many cases more than two crops in a single growing season are possible.
- CLASS 2**
Land well suited to a wide range of intensive cropping and grazing activities. It occurs on flat to gently inclined land with deep, well drained soils, and in a climate that favours all but the most frost sensitive crops. Limitations to use are slight, and good management and minor conservation practices can readily overcome these. However, the level of inputs is greater, and the variety and/or number of crops that can be grown are marginally more restricted than for Class 1 land.
- CLASS 3**
Land suited to cropping and grazing. Moderate levels of limitation restrict the choice of crops or reduce productivity in relation to Class 1 or Class 2 land. Soil conservation practices and sound management are needed to overcome the moderate limitations to cropping use.
- CLASS 4**
Land well suited to grazing but which is limited to occasional cropping or to a very restricted range of crops. The length of the cropping phase and/or range of crops are constrained by severe limitations of erosion, wetness, soils or climate. Major conservation treatments and/or careful management is required to minimise degradation.
- CLASS 5**
Land with slight to moderate limitations to pastoral use but which is unsuitable for cropping, although some areas on easier slopes may be cultivated for pasture establishment or renewal and occasional fodder crops may be possible. The effects of limitations on the grazing potential may be reduced by applying appropriate soil conservation measures and land management practices.
- CLASS 6**
Land only marginally suited to grazing activities due to severe limitations. The land has low productivity, high risk of erosion, low natural fertility or other limitations that severely restrict agricultural use. This land should be retained under its natural vegetation cover.
- CLASS 7**
Land with very severe to extreme limitations, which make it unsuitable for agricultural use.
- EXCLUSION AREAS**
Land other than Private Freehold or Leased Crown Land, eg. State Forests, State Reserves, conservation areas, major urban areas, major water bodies, National Parks and other conservation areas.

MAP USERS NOTE

This map depicts agricultural land capability of the St Pauls mapsheet at a scale of 1:100,000. Assessment is based upon the capability of the land for long-term sustainable agricultural production. This map is reliable only at the published scale and should not be enlarged. Only Private Freehold and Leased Crown Land has been mapped.

The land capability classes depicted on this map have been delineated by computer modelling and limited field work. A variety of data sources have been combined in a Geographic Information System using rules developed through field mapping of other map sheets. Due to the variable nature of some landscape processes it is not possible to develop rules for all possible scenarios. This map should therefore be considered to indicate the 'most likely' land capability class to be found in any particular location. If detailed knowledge is required, the area of interest should be mapped using conventional techniques at an appropriate scale.

The information on this map has been prepared by the Tasmanian Department of Primary Industries, Water and Environment to assist in land use planning and management. The Crown in the right of the State of Tasmania does not accept responsibility for any loss or damage which may result to any person arising from reliance on all or any part of this information, whether or not that loss or damage has resulted from negligence or any other cause.

ACKNOWLEDGEMENTS

Compiled by: S. Lynch and C. Grose 2002.
GIS, drafting and map design by: S. Lynch & M. Brown 2002.
Base data supplied by: Information & Land Services, DPIWE.
Custodianship of digital data held by DPIWE, Land Resource Assessment, Launceston.

Refer to this map as:
Lynch, S., 2002, Modelled Land Capability Classes of Tasmania, St Pauls 1:100,000 map. Department of Primary Industries Water and Environment, Tasmania.

St Pauls

1 : 100,000

Modelled Land Capability Classes

ABOUT THIS MAP:
This map depicts modelled land capability classes at a scale of 1: 100,000. It is part of a series of Land Capability Maps covering all the Private Freehold and Leased Crown land in Tasmania. The land capability information is shown over a topographic base. The classification system used to generate this map consists of seven classes based on the capability of the land for long-term sustainable agricultural production.

PROJECTION: Universal Transverse Mercator
HORIZONTAL DATUM: Australian Geodetic Datum 1966
VERTICAL DATUM: Australian Height Datum (Tas)
GRID: Zone 55 (Australian Map Grid), Australian National Spheroid.
CADASTRAL BASE: 1: 250,000 digital data.

