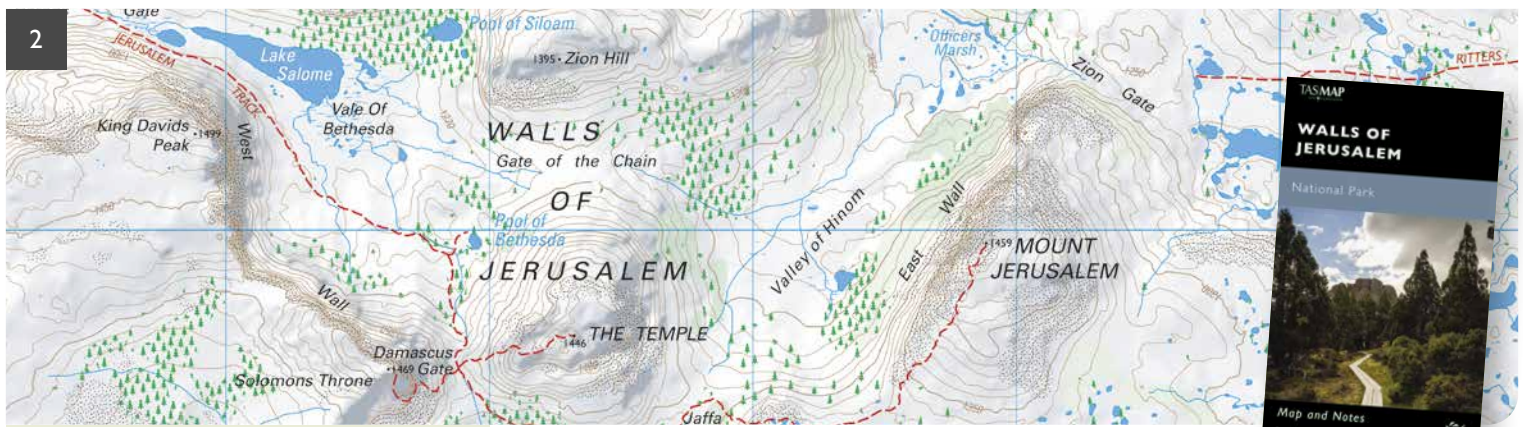


location matters

LandTasmania

A point of reference for Tasmanian Land Information





Detail of the newly released Walls of Jerusalem National Park map. Now available for purchase from Service Tasmania shops, TASMAM resellers and online at www.tasmap.tas.gov.au

This newsletter is designed and produced by **Land Tasmania**, a division of the Tasmanian Department of Primary Industries, Parks, Water and Environment (DPIPWE).

location matters aims to keep clients and members of the community informed about new developments and progress with existing projects, as well as introduce you to staff and the work they do.

Please take a few minutes to provide feedback or ideas for future issues by completing the short questionnaire at www.dpipwe.tas.gov.au/locationmatters

An electronic version of this publication can be found at:

www.dpipwe.tas.gov.au/locationmatters

CONTENTS

Message from the GM	2
Farming heritage gets a boost	3
National recognition for flood hazard mapping	4
Broader horizons for Aerial Photo Viewer	4
Popular 50 000 series nears completion	5
Tourism treasure map of Flinders Island on the way	5
New public counter for the Land Titles Office	6
LTO streamlining interactions with stakeholders	6
Glossary of terms for all things cadastral	7
Spatial information in regional recovery	7
News in brief	8
New TASMAM products	8

Message from the GM

Welcome to the 20th edition of location matters.

It has been a year since the last edition of *location matters* was published, and that was at the height of the COVID-19 pandemic. As such I thought it would be a timely opportunity to recognise the breadth of support provided by many members of **Land Tasmania** staff in the Government's response to COVID-19. Staff from across all areas of **Land Tasmania** have stepped in under interoperability arrangements to assist in functions that include hotel quarantine liaison, data entry, the processing of border travel permits and approvals, assisting with public information and COVID-19 related hotlines, and the provision of mapping and data analytics support to Tasmania Police, the Department of Communities and the Department of Health.

Alongside the support provided as part of the COVID-19 response over the past 12 months, the day-to-day business of **Land Tasmania** has continued, which is predominantly the focus of this edition.

One key change that has occurred in this time is the transition of Heritage Tasmania into the **Land Tasmania** team. This transition provides significant opportunities for the delivery of enhanced services to the Tasmanian community, particularly with **Land Tasmania's** strong focus on land related information systems such as the LIST and LISTmap. As such we have our first heritage-related article in this edition, detailing additional funding for the World Heritage sites Brickendon and neighbouring Woolmers in Northern Tasmania.



Finally if you are attending Agfest this year **Land Tasmania** will continue its LISTmap display, showcasing the power of web based and widely accessible location data and how they support the community, industry and visitors to the State.

You can find us in the DPIPWE tent at site 827, Quercus Park, Carrick from 5 to 8 May.

I hope you find this edition of *location matters* interesting and informative.

Stuart Fletcher
General Manager
Land Tasmania

Farming heritage gets a boost

Photos courtesy of Woolmers Estate and Brickendon.

Brickendon and its neighbouring property

Woolmers are regarded as the most significant rural estates in Australia, and Federal Government funding will allow these Northern Tasmanian sites to further conserve their agricultural history.

The properties are among the 11 outstanding heritage places across Australia that make up the Australian Convict Sites World Heritage Property:

<https://www.environment.gov.au/heritage/places/world/convict-sites>

Brickendon and Woolmers tell the story of land grants and the assignment of convicts as low-cost labour to encourage pastoral activities in Tasmania's fledgling colony.

Woolmers was continuously occupied by the Thomas Archer family from circa 1817 to 1994, and it is now open to the public to view and explore the estate and its extensive collection. Thomas's brother William established Brickendon on the land opposite Woolmers in 1824.

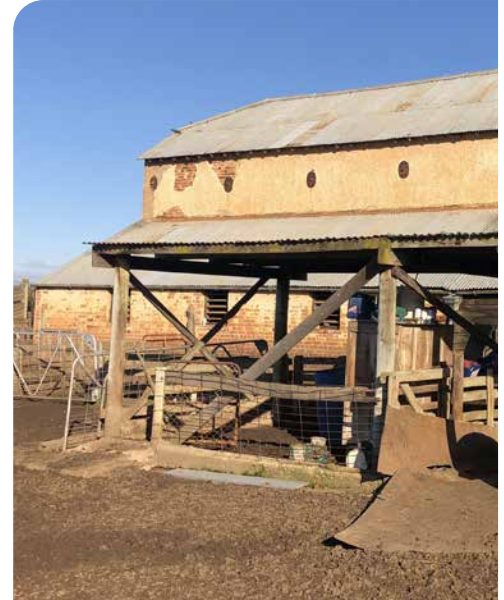
Direct descendants have continuously lived on and operated Brickendon as a farm since it was established. It remains a working farm today, with the original shearing shed still in use. The \$400 000 being provided to Brickendon will help restructure the farming property to better separate the daily farming operations from the historic farm village.

At Woolmers, \$233 000 has been provided to conserve the 1840s' cart shed and farm stables. The cart shed still contains an extensive collection of historic farming machinery, from small ploughs to large wagons. At the rear of the cart shed is a 12-stall stable that housed the draught horses used to pull the ploughs and wagons. The attic above the stables was used to store fodder for the horses and was designed to allow food to be dropped straight through the attic floor to the manger in each stall.

The conservation works will help enhance the visitor experiences on offer at these internationally recognised properties.

For more information visit brickendon.com.au and woolmers.com.au

Brickendon historic current sheep yards, race and shed.

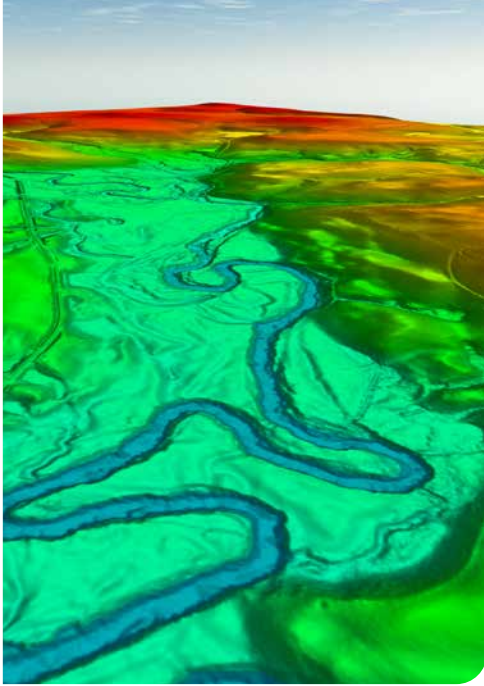


Brickendon's historic farm village.



Aerial view of Woolmers Estate, also featured on the cover.

National recognition for flood hazard mapping



Land Tasmania has

recently been recognised for its part in the Tasmanian Flood Hazard Mapping Project, which was a partnership between the Tasmanian and Australian Governments. This project was celebrated in the Tasmanian section for Technical Excellence in the Asia Pacific Spatial Excellence Awards, with state winners also selected for the national awards.

Land Tasmania partnered with the Tasmanian Flood Hazard Mapping Project to coordinate, collect and manage the capture of more than 12 000 km² of LiDAR data for areas of the State affected by the severe floods of 2016.

This data provides accurate elevation information, effectively creating a digital

twin of Tasmania. It also underpins detailed flood modelling and flood hazard assessment projects, and the production of accurately-defined flood event maps.

Judges praised the execution and collaboration achieved to complete a project with such broad scale.

The captured elevation data is incorporated into the State Digital Elevation Model and enables more accurate data capture across the **Land Tasmania** data holdings. All elevation data is available for free download via the ELVIS site at <https://elevation.fsdf.org.au/>

Example of LiDAR capture above a river bed near Sisters Beach on Tasmania's north-west coast.

Broader horizons for Aerial Photo Viewer

The Aerial Photo Viewer

(APV) allows for the searching, viewing and ordering of Tasmanian aerial images. A new version of the APV has been developed and recently went live, with more than 1 000 visits within its first few weeks. Both historic and newly-captured imagery is continually being added to the library of available imagery, which can be accessed at:

<https://dipwwe-au.maps.arcgis.com/apps/webappviewer/index.html?id=d448e31129d944aab95d856a07f7343c>

Tasmania's major imagery capture program, managed under the Tasmanian Imagery Program (TIP) for the 2020/2021 season, has commenced with 2 218 km² of capture planned across the State.

The majority of the project areas are now

captured and at various stages of quality assurance and processing.

A highlight of this year's program is that all capture and the majority of processing has been undertaken by Tasmanian companies, ensuring a greater benefit to the Tasmanian community.

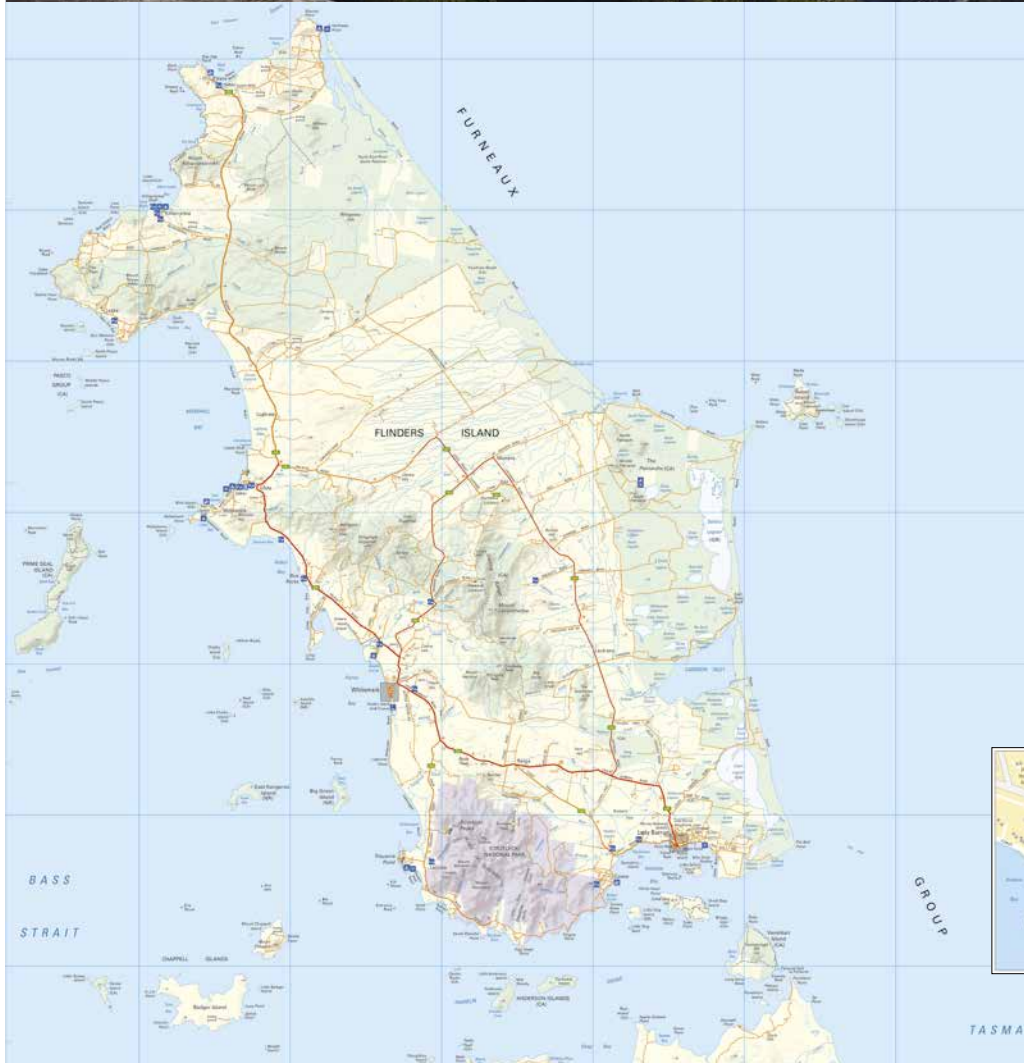
The pre-planning for the 2021/2022 season has begun with council visits underway across the State.

Above, new aerial imagery of Dover's Kent Beach Road and local orchards on Francistown Road to the right.



Tourism treasure map of Flinders Island on the way

Looking north towards Counsels Peak from Mount Strzelecki, Flinders Island.



Flinders Island is a

tourism hotspot with the average length of stay a little more than seven days. To assist the island's visitors, TASMAM is currently developing a new Flinders Island tourist map.

Based on the best-selling Visitors Map of Tasmania, the new poster sized map, produced at a scale of 1:120 000, will highlight tourist features and services around the island. It will be an essential tool for visitors when planning their trip or locating the many walks, beaches and natural wonders that make Flinders Island such a popular location.

The style and specifications of the map are currently being developed, with the final product to be based on the draft version pictured.

The map will be released in late 2021.



Enlargements of Lady Barron and Whitemark townships will provide detailed information for visitors.



Popular 50 000 series nears completion

Following public

consultation, the 1:50 000 topographic series was launched in 2015 as a new look for Tasmanian series mapping. Production of the series is nearing completion, with statewide coverage of printed maps expected by the end of 2021.

This coverage will be a great milestone, and achieving it in such a short timeframe is a testament to the hard work of **Land Tasmania** staff. The full series is also available as a digital version.

Tasmanians have always loved using paper maps. TASMAM has experienced unprecedented map sales in recent

months, with December 2020 one of the highest sales months in recent history. A number of maps in the 1:50 000 topographic series sold 40 per cent of average yearly sales in the first two months of this year alone, indicating that the popularity of the series is increasing as its final maps are released.

New public counter for the Land Titles Office

Following the renovation

of the Lands Building in Hobart, the Land Titles Office (LTO) has recommenced operations on Level 1.

The LTO is now sharing facilities and public counter space with Marine Resources. For this reason the LTO has changed the way the counter operates. Anybody looking to lodge documents or meet with staff must get a building pass from the security desk in the ground floor lobby, and check-in following COVID-19 protocols.

Wherever possible, documents must be lodged using the mail slots to the right of the public counter. This counter is not permanently staffed so if you do require the assistance of LTO staff, please select the correct section and press the appropriate button.

The LTO is no longer performing on-the-spot registrations. If you have a detailed enquiry, we would encourage you to make an appointment by email at: titles.enquiries@dipwe.tas.gov.au

Top right, staff assisting with a pre-booked registration enquiry. Bottom right, staff assisting at the new public counter and new mail slot in use to the right of the public counter.



LTO streamlining interactions with stakeholders

The LTO is undertaking

a wide-ranging body of work targeting client services and outcomes, and preparing for the introduction of National Electronic Conveyancing.

The LTO has recently employed a number of project staff to review internal processes, including exploring opportunities for digitisation and investigating possible avenues for legislative reform. Early work in this area has been the introduction of the Priority Final Plan scheme and changes to internal data tracking.

Over the coming months the LTO will publish updates to the website and practice guides to assist stakeholders.

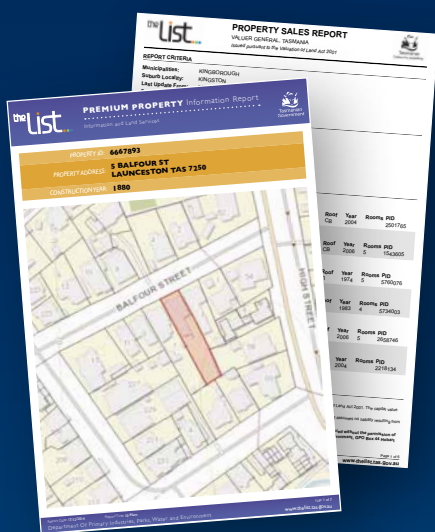
The aim is to streamline interactions with stakeholders, moving away from outbound paper and towards electronic channels.

Throughout this process the LTO will be consulting with peak professional bodies and other relevant stakeholders, when necessary, to ensure that the changes being

undertaken meet community needs and expectations. If you have any questions about this process, please email the LTO at: titles.enquiries@dipwe.tas.gov.au



Premium Property Report



Property information, sales
and statistics in a single report

www.thelist.tas.gov.au



Client Services contact details

Normal operating hours for all client enquiries are:

9.00am – 5.00pm Monday to Friday

LIST Helpdesk

E-mail listhelp@dipwe.tas.gov.au

Phone (03) 6165 4444

Web via the client request form

TASMAP

E-mail tasmmap@dipwe.tas.gov.au

Phone (03) 6165 4444

Order online at www.tasmmap.tas.gov.au

Spatial Data / Agreements / Copyright

Email listhelp@dipwe.tas.gov.au

Phone (03) 6165 4444

Glossary of terms for all things cadastral

The Intergovernmental

Committee on Surveying and Mapping (ICSM) Cadastre Working Group (CWG) has recently published a glossary of terms around all things cadastral to promote consistency in communication and documentation. The CWG is a panel of experts, drawn from Australian and New Zealand Government Agencies, whose role is to deliver on the goals and actions articulated in Cadastre 2034 and other ICSM cadastral initiatives.

The group is also currently drafting a standard for describing the accuracy of property boundary linework represented in digital mapping systems, such as LISTmap, and is acting as a reference group for the recently announced Australian/New Zealand 3D Cadastral Survey Data Model and Exchange (3D CSDM) program.

For further information, go to:

www.icsm.gov.au/what-we-do/cadastre

www.icsm.gov.au/sites/default/files/Cadastre%20definitions%20glossary-v1.0.pdf

www.spatialsource.com.au/surveying/surround-nz-to-take-charge-of-3d-csdm



Spatial information in regional recovery

The Tasmanian Spatial Information Council (TASSIC)

had its activities curtailed by COVID-19 during 2020, nevertheless it was able to convene an online forum focused on the role of spatial information in regional recovery.

In partnership with the Cradle Coast Authority and Regional Development Australia (Tasmania), participants listened to presentations about Digital Twin pilot projects in NSW and were able to engage in a moderated forum to unpick the barriers to adoption by smaller Local Government Authorities. Following the forum, TASSIC has established a subcommittee to engage

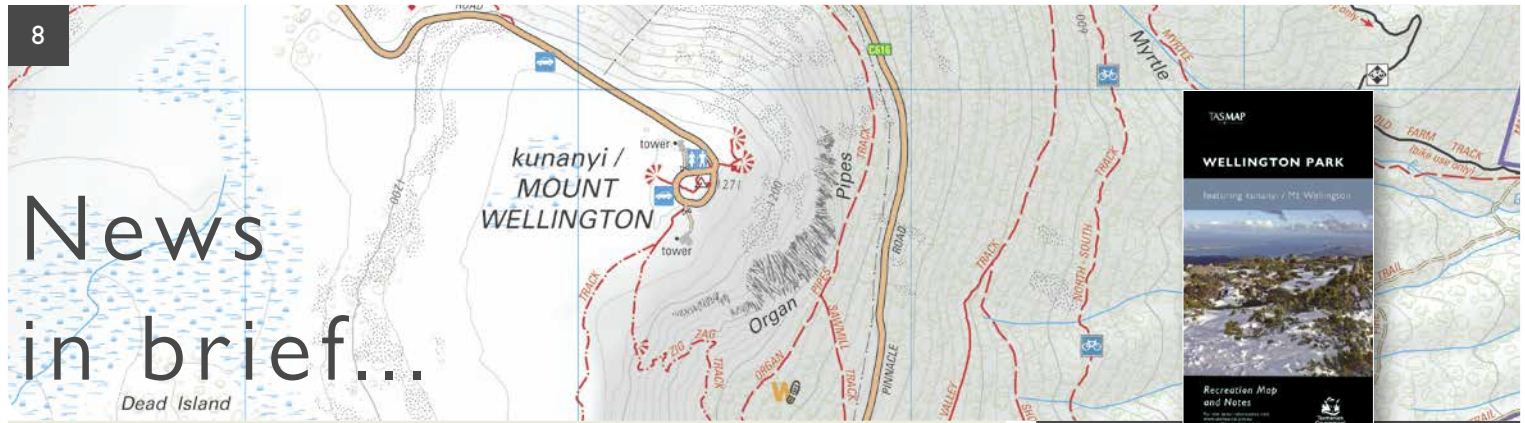
further with Local Government, and is arranging to brief the responsible Ministers.

TASSIC's current Strategic Plan expires this year and work has commenced on drafting the next iteration. It is expected that a new plan will be available by mid-2021.

TASSIC membership is currently in the process of being re-nominated and there has been an expressions of interest process for the next term as Chair. At the time of writing, selections are still being confirmed.

News in brief...

Dead Island



Introduction of the PFP scheme

The Priority Final Plan (PFP) scheme came into effect on 30 November 2020, replacing the previous Early Issue Scheme. Plans that are compliant with the PFP scheme, and do not require amendment or further information via notice in writing, must have titles issued within 15 business days of the Land Titles Office receiving the final plan sealed by council. In the first three months there were 109 lodgements under the PFP scheme – 86 of which comply and 33 that have been registered, all within the statutory timeframe.

New Aboriginal and dual names

In April 2020, 18 Aboriginal and dual names were proposed by three proponents. The Place Names Advisory Panel referred all proposed names to the Aboriginal and Dual Naming Reference Group, which undertook three on country visits in its review of the names – one with each of the proponents in the north-east, north-west and south-east. The Reference Group submitted its Recommendation Reports to the Place Names Office in October and the proposed names were advertised publicly for a period of six weeks through the Advertisements page of the Placenames Tasmania and DPIPWWE websites, and with a notice in the three regional newspapers. Following the December 2020 and March 2021 meetings of the Place Names Advisory Panel, the names have been approved, and are now official, and available to view on the Placenames Tasmania website.

The Doughboys off Cape Grim have been dual named Koindrim by the Circular Head Aboriginal Corporation.



New Statutory Valuations Underway

Contracts for the provision of the Fresh Valuations for the Municipalities of Central Highlands, Devonport, Hobart, Huon Valley, Kentish, Kingborough, Latrobe, Southern Midlands, West Coast and West Tamar, which were delayed last year due to the impact of COVID-19 and the ability of Valuation Contractors to enter the State, were awarded in February 2021. Valuations are due to be returned to the Valuer-General by 1 February 2022 and they will be effective for statutory purposes from 1 July 2022.

The delay in the Fresh Valuation program has resulted in the Valuer-General only issuing Land Valuation Adjustment Factors as at 1 July 2021.

Updated Placenames website goes live

A new version of the Placenames Tasmania website recently went live, allowing for more functionality around the 'Advertisements' page. Placenames Tasmania is the Tasmanian place naming register as well as your one-stop shop for information on place names in the State.

New functionality includes the ability for the user to filter place names by stage, order by date or name, and change the number of records viewable. A new colour and category has also been introduced for 'Awaiting Minister Decision', allowing individual display and filtering.

Since the introduction of the *Place Names Act 2020* mid last year, a number of changes to the Placenames Tasmania website have been achieved to enable it to function efficiently under the new Act as well as to ensure it continues to be easy to use for stakeholders.

Wellington Park Recreation Map
New edition now available.

NEW TASMAM PRODUCTS

Recently released map products are now available for purchase online at www.tasmap.tas.gov.au or from Service Tasmania shops and TASMAM resellers.

1:50 000 Topographic Maps

- Three Hummock
- Rapid River
- Princess Range
- Murchison Ed 2

Coming Soon

- Swanston
- Boullanger
- Tully
- Whyte River
- Frenchmans Ed 2
- High Rocky



National Park, Walk and Recreation Maps

- South Coast Walks Map
- Douglas-Apsley National Park Map
- Walls of Jerusalem National Park Map
- Wellington Park Recreation Map



Tourist Products

- Visitors Map of Tasmania 2021



POPULAR PRODUCTS

Digital downloads

- National Park, Walk and Recreation Maps
- 1:50 000 Topographic Maps – complete coverage - now available as a statewide coverage on USB drive.

Now available online at

www.tasmap.tas.gov.au

Direct enquiries to

Manager - Service Delivery

Land Tasmania

GPO Box 44, Hobart, Tas 7001

T: (03) 6165 4444

E: listhelp@dpiwwe.tas.gov.au

W: www.dpiwwe.tas.gov.au/locationmatters

the **list**

www.thelist.tas.gov.au

TASMAP

www.tasmap.tas.gov.au