

EDITION 15 • NOVEMBER 2017

Online ISSN: 1837-994X

# location *matters*

**Land**Tasmania

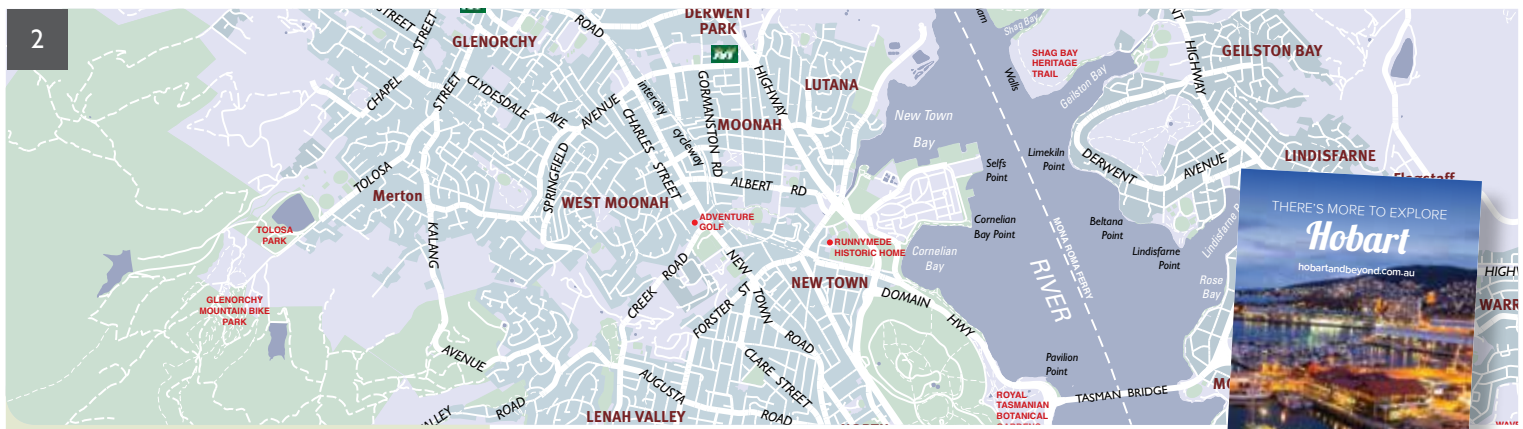
*A point of reference for Tasmanian Land Information*



Department of  
Primary Industries, Parks, Water and Environment







This newsletter is designed, written, edited and produced by **Land Tasmania**, a Division of the Tasmanian Department of Primary Industries, Parks, Water and Environment (DPIPWE).

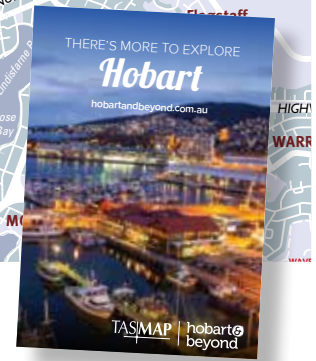
**location matters** aims to keep clients and members of the community informed about new developments and progress with existing projects, as well as introduce you to staff and the work they do.

Please take a few minutes to provide feedback or ideas for future issues by completing the short questionnaire at [www.dpipwe.tas.gov.au/locationmatters](http://www.dpipwe.tas.gov.au/locationmatters)

An electronic version of this publication can be found at:

[www.dpipwe.tas.gov.au/locationmatters](http://www.dpipwe.tas.gov.au/locationmatters)

The new Explore Hobart Map – available for purchase from Service Tasmania shops, TASMAT resellers and online at [www.tasmap.tas.gov.au](http://www.tasmap.tas.gov.au)



## Message from the GM



### On behalf of

**Land Tasmania**, welcome to the 15th edition of the *location matters* newsletter. This edition has a focus on collaboration and innovation with some very exciting initiatives between **Land Tasmania**, the Department of Education and Geoscience Australia.

**Land Tasmania** has been working closely with the Department of Education on building a geospatial data analytics capability to support evidence based decision making. Much of this work is being securely delivered via LISTmap to provide access to staff who have traditionally not been users of GIS software.

The work that we are currently doing with Geoscience Australia on delivering LiDAR data via the national elevation portal (ELVIS) will provide benefits to both **Land Tasmania** and users of high-resolution Tasmanian terrain data. The initiative also shows the value of collaboration across government in Australia, and the benefits it can bring to smaller jurisdictions and its citizens.

Also along the innovation line, **Land Tasmania** is about to embark on a major digitisation exercise for many of its historical land titles and deeds records. Currently these documents, many of them still supporting land tenure, are not available online. The records will be progressively digitised over the coming months and made available to **Land Tasmania** clients online via the Land Information System Tasmania. The physical records will then be transferred to the Tasmanian Archives Office for permanent preservation.

**More information on the historical record digitisation will be provided to customers who access these records over the next few weeks via Land Titles Office Circulars.**

I hope you enjoy reading more information in relation to these exciting initiatives in this edition of *location matters*.

Stuart Fletcher  
General Manager,  
**Land Tasmania**

## CONTENTS

Message from the GM	2
TASSIC seeks comment on draft strategic plan	3
A 'Tarn' great photo for the new Mount Field map	3
Mapping the future	4
Fresh valuations reflect long-term market stability	6
TOP system moves towards online lodgement of plans	6
ELVIS improves access to elevation data	7
News in brief	8
New TASMAT products	8

### Cover image

*Tarn Shelf*, by Craig Vertigan, is the latest winner of the 'Your Photo on Your TASMAT' competition. Read the full story on page 3.



# TASSIC seeks comment

*on draft strategic plan*

## The Tasmanian Spatial Information Council (TASSIC)

has circulated a draft plan of its prospective priorities following a recent forum of spatial information experts and sector users.

TASSIC is an advisory body. Its role is to provide a forum for communication and coordination across the sectors in the development of the Tasmania Spatial Data Infrastructure. TASSIC has articulated its priorities in a number of strategic plans and is presently engaged in finalising the new plan, scheduled for release in late 2017.

In order to test its preliminary thoughts, TASSIC convened a forum of spatial information experts and users from across the sector to workshop a number of themes. This resulted in a well-attended and lively session in which views about the prospective priorities were expressed and recorded for further consideration.

The draft strategic plan has now been circulated to TASSIC members for their comments. The plan starts with setting the operating environment, including naming up the key contextual themes such as National Positioning Infrastructure, datum modernisation, the emerging 3D world and data analytics, and data markets. Then there is a section reviewing the priorities for Tasmania as articulated in the Government's agenda. These include:

- Health and Human Services – collation of health services data, patient flow management, mapping environmental hazards, identification of 'at risk' communities.
- Emergency Services and response – harmonisation across services, availability of real time data, hazard mapping and prevention modelling.
- Tourism – infrastructure planning and environmental impacts, traffic flow modelling.
- Agriculture and aquaculture – monitoring and measurement of soil management, irrigation infrastructure, yield improvements.

The plan then distills these State priorities into goals for TASSIC, and proposes four key objectives:

1. Promoting the role and value of spatial information to Government and industry
2. Facilitating the implementation of spatial information projects
3. Fostering innovation
4. Fostering education and training

TASSIC members will continue to provide commentary on the document leading up to its submission for endorsement by the Minister for Primary Industries and Water, Jeremy Rockliff.

TASSIC is also pleased to welcome its new Executive Officer, Carmel Clark, who will work with the Chair and members to streamline the Council's activities and communications.

## A 'Tarn' great photo *for the new Mount Field Walk Map*

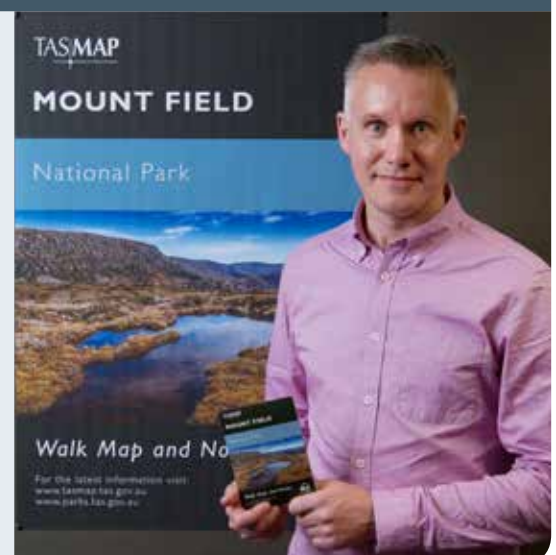
A winning photograph of the scenic Tarn Shelf has been chosen as the cover for the new version of the Mount Field Walk Map and Notes.

This photo, by Craig Vertigan, was contributed as part of the '*Your Photo on Your TASMAP*' competition, which calls on map users to submit cover photos for upcoming National Park and Recreation Maps. Craig's image, Tarn Shelf, captures the beauty of the topography of the area and looks stunning on the map cover:

TASMAP has released a new version of the Mount Field Walk Map and Notes, reformatted to A3 size and available at a new reduced cost. The map is also available digitally.

Keep an eye on the TASMAP eShop and Facebook page for details of future competitions.

*'Your Photo on Your TASMAP' competition winner, Craig Vertigan.*



# Mapping the future

## The geospatial expertise of **Land Tasmania**

is being harnessed to custom-build maps using datasets developed by the Department of Education (DoE).

A recent focus by the DoE has been on spatialising data relating to the 63,000 students currently enrolled in Tasmanian public schools. DoE has been nation-leading in managing its datasets and brings a people-centred perspective on spatial data and not one purely about the location of assets.

Tony Luttrell, Director of Strategic Data Management at DoE, said they need to improve their geospatial capability to facilitate improved strategic planning and decision-making in order to better support schools and students. This realisation was the start of an ongoing partnership with **Land Tasmania** that draws not only on the latter's geospatial expertise, but also the established framework of The LIST (Land Information System Tasmania).

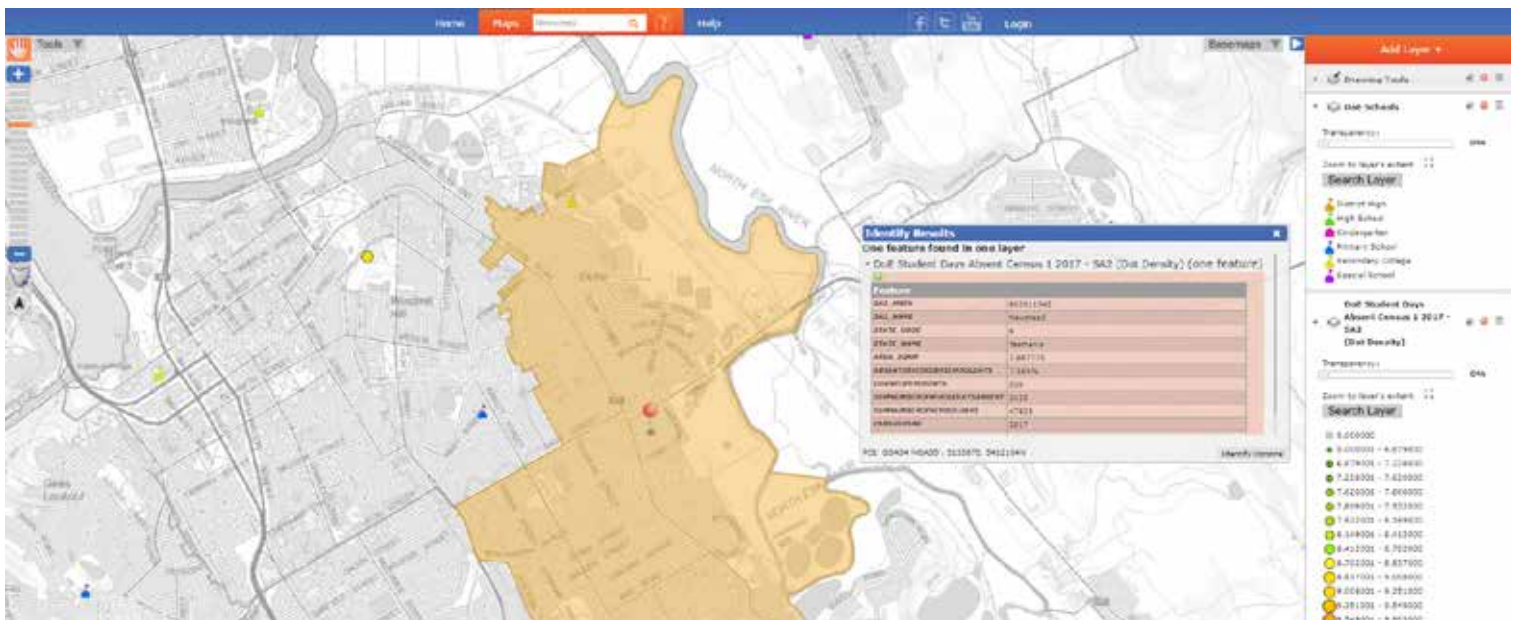
"Geospatial provides a very different outlook on our people-centred data," Tony said. "On an operational level, it's a new perspective that helps us identify different student related factors and



Tony Luttrell and Peter von Minden discussing possible uses of data held in The LIST.

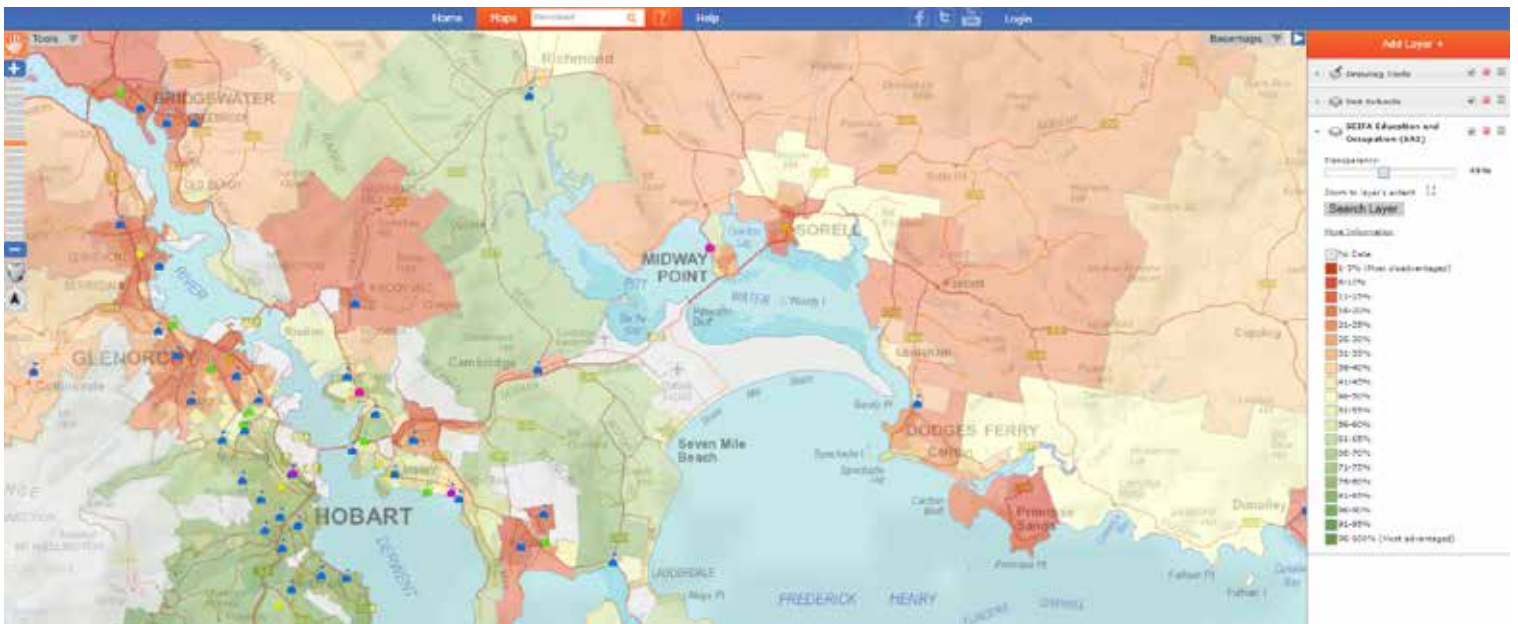
trends. So rather than just assisting in developing strategies for our physical assets, spatialising student absenteeism data for example can highlight places of concern across varying socioeconomic areas that may have previously gone undetected. This will allow schools to review and develop improved support student strategies.

"To date, we've moved more than 40 DoE datasets into The LIST in a secured environment only accessible by approved staff. We've also asked **Land Tasmania** – and we're very appreciative of the expertise they bring to this partnership – to import over 130 external data sets from organisations such as the Department of Treasury and Finance,



Student Absenteeism Maps can show the level of student absenteeism across schools servicing specific areas.





A Socio-economic Indexes for Areas (SEIFA) Map showing the level of education and occupation advantage across areas and the schools located in those areas.

Australian Bureau of Statistics (ABS) and so on. This information provides an evidence based approach to developing better strategies, decisions, planning and forecasts."

Peter von Minden, the Spatial Information Facilitation Officer with **Land Tasmania**, said the visible mapping of datasets helps people to compare and analyse information. Peter is among several experts within **Land Tasmania** who can not only present the data in a geospatial capacity but also provide follow-up support to maximise its potential.

"There are all sorts of benefits in using geospatial data because humans are visually oriented," Peter said. "There is some analysis that people can't do without seeing it represented on a map and comparing it to other datasets. Other benefits include the ability to link your spatial data back to your internal asset database with hyperlinks and vice-versa.

"These are just a couple of the advantages, but there are many. The beauty of my role is that sometimes we can't fully imagine or access the opportunities of geospatial until people start to use it. I present the data and once it's out there, people come up with great ideas to adapt and develop it."

With regard to the range of opportunities afforded by geospatial data, Tony Luttrell added that the best may be yet to come. He believes geospatial has the potential to transform processes by allowing agencies to exchange data such as through The LIST. For example DoE and **Land Tasmania** are currently reviewing the potential to pass emergency management information about fires, floods and so on to schools via edi, DoE's data portal, recognised with top honours at the 2015 Prime Minister's Awards for Excellence in Public Sector Management.

"Now is the pivotal point where we can leverage off what we've done and become quite integrated in how we do it," Tony said.

## Unlocking the potential of spatial layers

After collaborating with **Land Tasmania**, the Department of Education Tasmania (DoE) now has access to spatial layers that are editable and available via the LISTmap online website. As an illustration of how this works, consider the hypothetical case of a natural disaster.

Select members of the DoE staff are able to mark a facility – such as a school, a child and family centre, or a public library – as closed during a flooding, a bushfire or an extreme weather event. Those facilities are then instantly recognised as being closed on LISTmap and are also made available for broader public awareness on the Department of Premier and Cabinet's TasAlert website.

As agencies transfer even more data to the layers of LISTmap, the same information could be used to further assist the response of emergency services.

**'Geospatial' relates to the visual representation of data on a map.**

# Fresh valuations

*reflect long-term market stability*

## Approximately

94 000 fresh valuations were issued in the financial year of 2016-17 for the municipal areas of Derwent Valley, Dorset, Flinders, Glamorgan Spring Bay, Glenorchy, King Island, Launceston, Sorell, Tasman and Waratah Wynyard. These valuations were completed by valuation contractors with the Office of the Valuer-General responsible for quality assurance. The previous revaluations for this group of

municipalities occurred in July 2010.

The Land Value, Capital Value and the Assessed Annual Value for each property have been determined as at 1 July 2016 levels of value. The values will take effect from 1 July 2017 for rating and taxing purposes.

There was limited movement in the property market between 2010 and 2016. This has resulted in little change in

the values (see table below), and only approximately 300 objections to the fresh valuations. The previous revaluation cycle resulted in 1700 objections following the substantial increase in values from 2004 to 2010. The more recent movement in the property market, particularly around Hobart, has not been reflected in these fresh valuations but will be reflected in next year's adjustment factors

## Overall municipality % Change Fresh Valuation 1 July 2010 to 1 July 2016

Municipality	Total Properties	Land Value % Change	Capital Value % Change	Assessed Annual Value % Change
Derwent Valley	5 270	3.53	2.38	8.65
Dorset	5 184	9.34	11.23	16.78
Flinders	1 307	10.59	9.31	10.81
Glamorgan Spring-Bay	5 844	7.18	11.75	13.63
Glenorchy	21 580	5.70	-0.17	4.02
King Island	1 697	-4.60	0.40	1.21
Launceston	31 960	2.56	2.13	4.23
Sorell	9 018	4.45	7.77	11.21
Tasman	3 615	-8.92	0.50	3.26
Waratah-Wynyard	7 853	0.30	1.17	4.39
<b>Total</b>	<b>93 328</b>			

## TOP system *moves towards online lodgement of plans*

### One of the ways

that the State Government is increasing the efficiency of property transactions is through the implementation of the Tasmanian Online Plan (TOP) system, the first stage towards enabling the acceptance of online lodgement of plans. The TOP system has been developed with the functionality for full electronic lodgement of plans, and with the capability for change to reflect future legislative or policy changes.

The lodgement of Early Issue plans through the TOP system will allow for priority examination and registration.

The TOP system enables the creation of plan-related documents and the lodgement of digital images. TOP also allows clients to use their in house systems for plan preparation and provides the ability to upload these plans directly into TOP. Other features of TOP include:

- the early allocation of plan numbers;
- pre-population of supporting systems stored data;

- email notifications to relevant parties (including TasWater);
- ease of tracking workflow requirements;
- ease of tracking plan status; and
- the opportunity to familiarise clients with online processing.

The TOP system is to be released in stages, with the first having occurred in June this year.

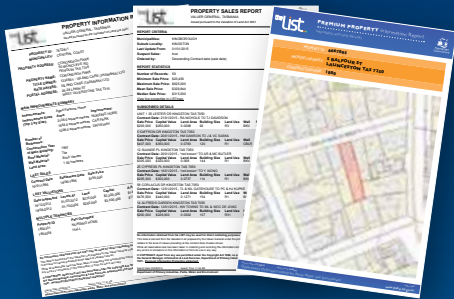


# Find what you need!

Land Information  
System Tasmania

the **List**

**Premium  
Property Report**



Property information, sales and  
statistics in a single report



Tasmanian  
Government

[www.thelist.tas.gov.au](http://www.thelist.tas.gov.au)

## Client Services contact details

Normal operating hours for all client enquiries are:

9.00am – 5.00pm Monday to Friday

### LIST Helpdesk

E-mail [listhelp@dpiwwe.tas.gov.au](mailto:listhelp@dpiwwe.tas.gov.au)

Phone (03) 6165 4444

Web via the client request form

### TASMAP

E-mail [tasmap@dpiwwe.tas.gov.au](mailto:tasmap@dpiwwe.tas.gov.au)

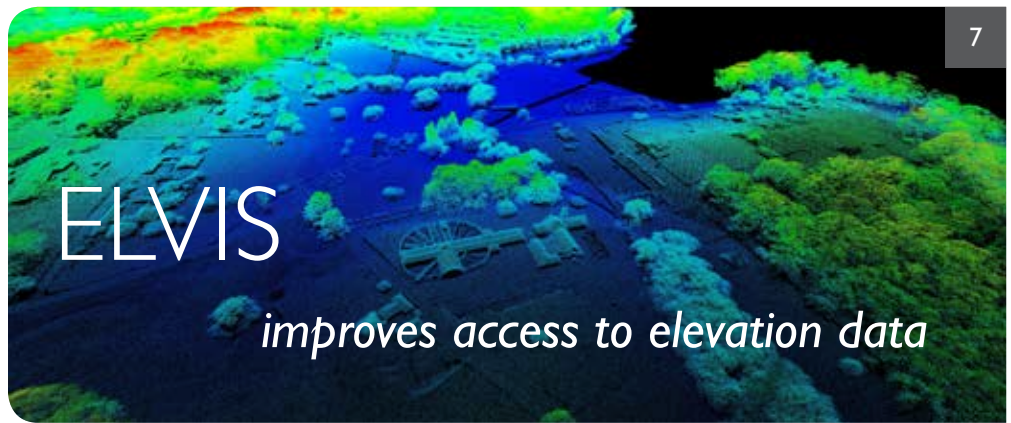
Phone (03) 6165 4444

Order online at [www.tasmap.tas.gov.au](http://www.tasmap.tas.gov.au)

### Spatial Data / Agreements / Copyright

Email [listhelp@dpiwwe.tas.gov.au](mailto:listhelp@dpiwwe.tas.gov.au)

Phone (03) 6165 4444



## A significant portion

of Tasmania is now covered by elevation data captured by LiDAR equipment.

A number of projects have provided a previously unattainable level of precision and accuracy for ground formation and surfaces, and this has resulted in a growing demand for the data. While the data is free, the access to it, at this stage, is via a process of 'request for data' from **Land Tasmania** (a somewhat lengthy process – and one with a delivery/data translation cost, in certain cases).

Enter ELVIS (Elevation Information System).

ELVIS is the acronym given to an Amazon cloud-based storage and supply system set up by Geoscience Australia (GA). It enables users of elevation information to search, identify and download elevation data without the need for contacting the data custodians <http://www.ga.gov.au/elvis/>

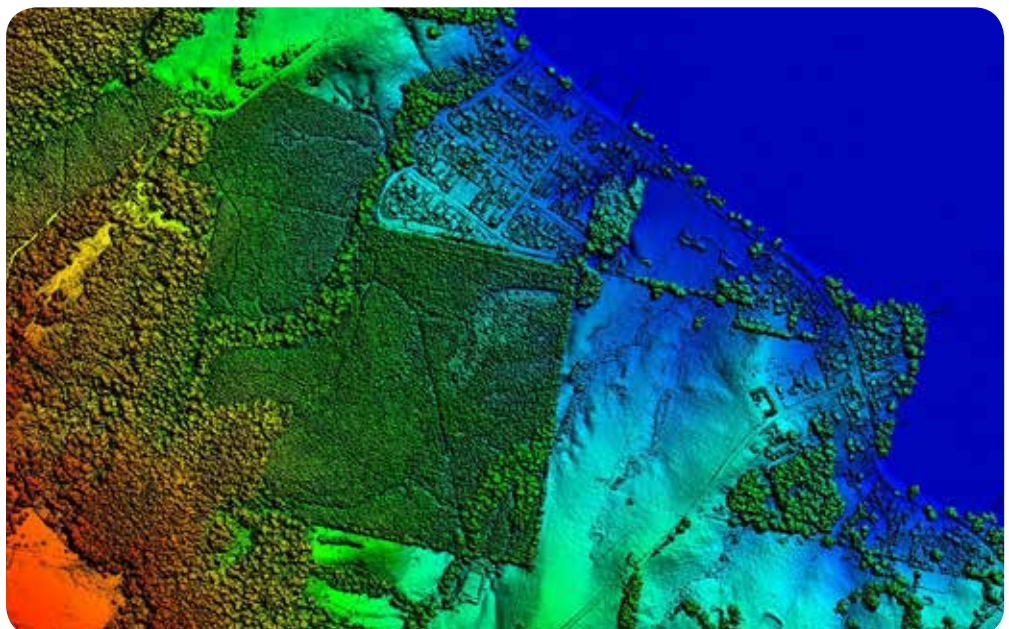
The data is held as either a DEM (Digital Elevation Model) or as LAS files (a LAS file is an industry-standard binary format for storing airborne LiDAR data.) While ELVIS is the GA portal for elevation data and provides access to GA held data, the State jurisdictions have significant elevation data

holdings not available through GA.

Therefore the basis (AWS Cloud) for the ELVIS portal has been transferred to the Intergovernmental Committee for Survey and Mapping (ICSM) Foundation Spatial Data Framework (FSDF) site, <http://elevation.fsdf.org.au/> and State-based data can be stored there for unfettered access by all. The site is supported by GA; NSW, ACT and Queensland have all commenced placing data in the Amazon cloud with links through the ICSM version of ELVIS. Tasmanian elevation data has been discussed with GA with a plan to make this data also available through the ICSM site. The timeline for this is a little wide as there is a large amount of data to upload and a couple of steps for the data managers to complete. The aim is from late 2017 to early 2018 for Tasmanian elevation data accessibility.

The benefits are that the elevation data will be free, there will be no delivery charge, clients can select their needs via an interactive web index, metadata for each dataset will be readily available and updates will be added as they become available including a new state DEM currently being produced by Mineral Resources Tasmania.

*DSM (Digital Surface Model) of Camarvon Bay, Port Arthur.*







## Penguin app is a game-changer

An app to support the monitoring of little penguins in the Derwent Estuary, developed by **Land Tasmania**, is proving to be a game-changer. The penguin collector app, built on Collector for ArcGIS, can be used on any smart phone or tablet. Field workers use the map and GPS to locate nest sites, and then log inspection records using pre-defined values. This makes the app simple to use and enables efficient reporting.

The penguin collector app also allows field workers to log data at the time of monitoring for immediate online use, providing a greater understanding of how the population of little penguins is faring. The online feature will be helpful for land managers when assessing development applications close to the foreshore, as well as understanding where to direct efforts in managing little penguin habitat. For the Derwent Estuary Program, and our monitoring partners at BirdLife Tasmania and the University of Tasmania, the app supports the ability to efficiently report on the health of the little penguin population as a whole.



## Training available in the use of LISTmap

Customised training for your organisation in the use and potential of LISTmap continues to be offered by **Land Tasmania**.

The latest training sessions, organised in conjunction with NRM North, were offered to Environmental Consultants and Agronomists in the north of Tasmania. The day was broken into two parts; the first was a demonstration of LISTmap, while the second was a hands-on session in which

## Oil spill data project set for national capability

A field-based data collection project that records the location of oil-spill affected animals and shorelines, developed by the Emergency Services GIS Section of DPI/PWE, is set to become the basis for a nation-wide capability.

This project, which is served through the ArcGIS Collector App, is the first developed for oil spills in Australia.

The assessment and capture of the location of noxious and hazardous substances following a major marine oil spill is critical to the ongoing management and protection of the environment, including both animals and plants.



participants prepared a customised map in a supported environment.

Feedback from the day was great with responses including, "Great insight into a comprehensive, free, relevant resource", "Blew me away the power of this info and its potential", and "More please".

Please contact Client Services by email [listhelp@dpipwe.tas.gov.au](mailto:listhelp@dpipwe.tas.gov.au) if you would like similar group sessions held within your organisation.

Above: Detail of TASMMap's 1952 Mount Field map.

TASMMap will soon introduce Historical Tasmanian Maps to the TASMMap eShop to complement the popular Tasmanian Historical Plans and Charts. The high quality scans will be available for purchase and are ideal for framing.

## New TASMMap products

Recently released map products are now available for purchase online at [www.tasmap.tas.gov.au](http://www.tasmap.tas.gov.au) or from Service Tasmania shops and TASMMap resellers.

### 1:50 000 Topographic Maps

- Channel
- Frederick Henry
- Frenchmans
- Noland
- Prosser



### Tourist Products

- Explore Hobart
- Visitors Guide to Tasmania (Chinese Version)



### National Park, Walk and Recreation Maps

- Mount Field National Park



## NEW PRODUCTS -

### DIGITAL DOWNLOADS

- National Park, Walk and Recreation Maps
- 1:50 000 Topographic Maps – complete coverage - Now available as a statewide coverage on USB drive.

Now available online at  
[www.tasmap.tas.gov.au](http://www.tasmap.tas.gov.au)

## Direct enquiries to

Manager - Client Services

**Land Tasmania**

GPO Box 44, Hobart, Tas 7001

T: (03) 6165 4444

E: [geodata.clientservices@dpipwe.tas.gov.au](mailto:geodata.clientservices@dpipwe.tas.gov.au)

W: [www.dpipwe.tas.gov.au/locationmatters](http://www.dpipwe.tas.gov.au/locationmatters)

BL11215

the **list**

[www.thelist.tas.gov.au](http://www.thelist.tas.gov.au)

**TASMAP**

[www.tasmap.tas.gov.au](http://www.tasmap.tas.gov.au)