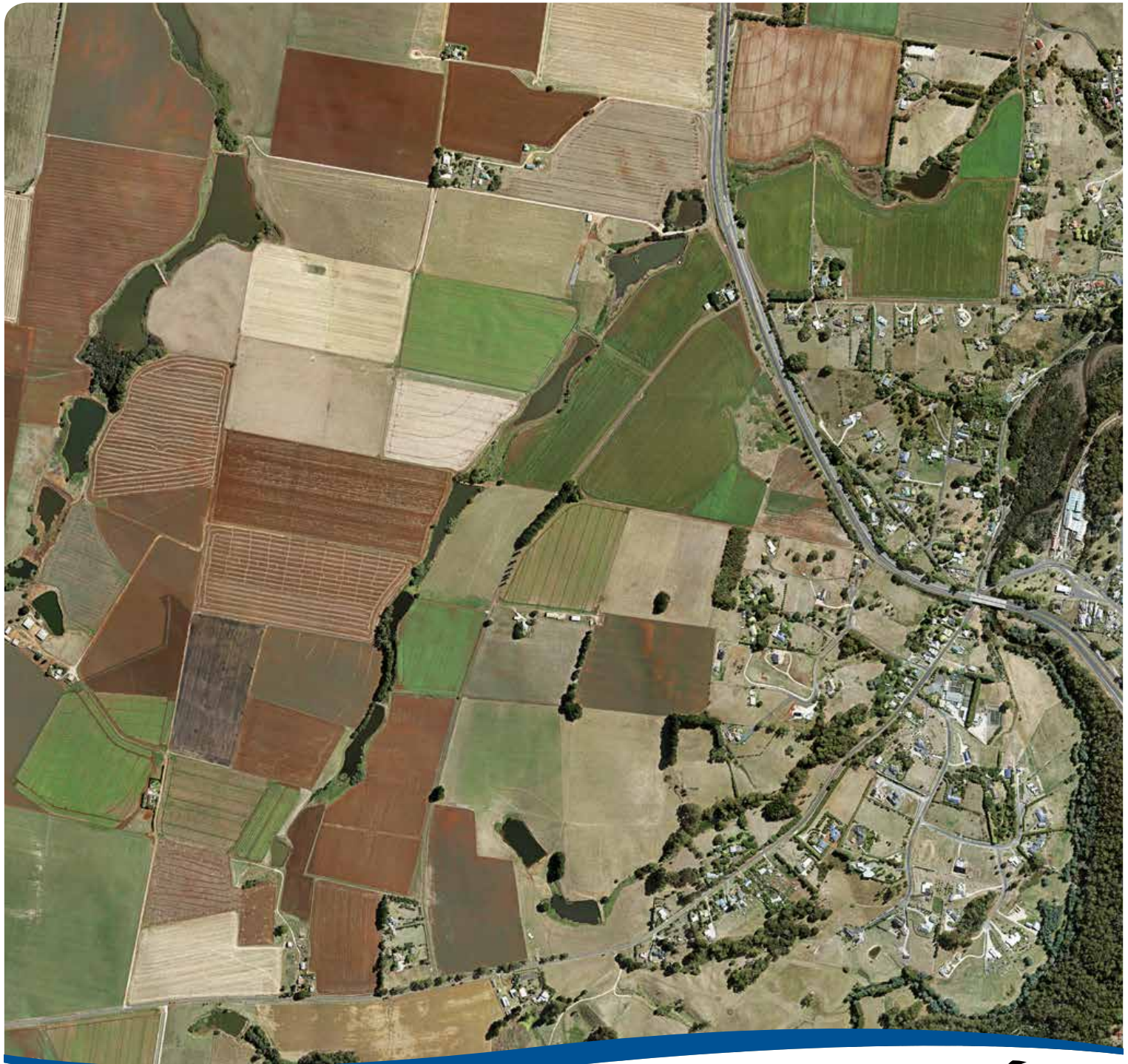


# location matters

**Land**Tasmania

*A point of reference for Tasmanian Land Information*







This newsletter is designed and produced by **Land Tasmania**, a division of the Tasmanian Department of Primary Industries, Parks, Water and Environment (DPIPWE).

**location matters** aims to keep clients and members of the community informed about new developments and progress with existing projects, as well as introduce you to staff and the work they do.

Please take a few minutes to provide feedback or ideas for future issues by completing the short questionnaire at [www.dpipwe.tas.gov.au/locationmatters](http://www.dpipwe.tas.gov.au/locationmatters)

An electronic version of this publication can be found at:

[www.dpipwe.tas.gov.au/locationmatters](http://www.dpipwe.tas.gov.au/locationmatters)

Available for purchase from Service Tasmania shops, TASMAT resellers and online at [www.tasmamap.tas.gov.au](http://www.tasmamap.tas.gov.au)

## Message from the GM

### Welcome to the latest edition

of *location matters*, **Land Tasmania's** bi-annual Newsletter. This issue focuses on collaboration and business improvement activities occurring across **Land Tasmania**.

As many of you may be aware the Tasmanian Spatial Information Council (TASSIC) is the key forum for increased collaboration between public, private, academic and community sectors in the collection, maintenance and use of spatial information in Tasmania. The Council reports to the Minister for Primary Industries and Water, the Hon. Guy Barnett MP. Recently Minister Barnett met with the newly-reappointed Chair of TASSIC Alan Smart to review the TASSIC strategic plan and be briefed on the Council's 2019 work plan, which includes more collaboration with non-traditional spatial sectors such as Agriculture and Health and Human Services.

TASSIC's vision is to realise the potential that spatial information and location based services offer for the Tasmanian economy, its environment and social fabric.

Member appointments are for two years. The current membership of TASSIC is Alan Smart - *Independent Chair*, Michael Giudici - *Representing DPIPWE*, Sophie Muller - *Representing DPAC*, Emily Brown *Representing Local Government*, Deanna Hutchinson - *Representing the Spatial Industries Business Association (SIBA)*, Paul Digney - *Representative from the Surveying and Spatial Sciences Institute (SSSI)* and Rachel Hurd - *Representing the University of Tasmania*.

The Council's first meeting for 2019 will be held in April in conjunction with the Tasmanian Agricultural Productivity Group (TAPG) expo at Hagley Farm School (an annual collaboration).

Other activities for 2019 include:

- Commissioning of a LIST and spatial data services industry survey in conjunction with **Land Tasmania** as a prelude to developing future LIST requirements and improvements.
- Facilitating a series of workshops with government and industry on the outcomes of the LIST survey, in order to develop an informed report to **Land Tasmania's** consideration of LIST and spatial data services investments.
- Convening an executive forum on the use of spatial information in the agricultural sector, set down for Thursday 7 November 2019 in Hobart.

We hope you enjoy reading about similar collaborations and advances in the following pages of *location matters*.

## CONTENTS

Message from the GM	2
New imagery and elevation data available for free download	3
Collaboration fuels GIS emergency response to fires	4
Consultation sought on <i>Strata Titles Act</i>	6
Digital enhancements further improve access to LTO information	6
Valuations highlight property market growth	7
GDA2020 update	7
News in brief	8
New TASMAT products	8

### Cover image

Newly captured orthorectified aerial image of Don, near Devonport.  
Read the full story on page 3.



Minister for Primary Industries and Water, the Hon. Guy Barnett MP with the newly-reappointed Chair of TASSIC Alan Smart.

This publication has been printed on Maine Recycled Silk paper, made from 60% post consumer waste fibre and 40% FSC® certified virgin fibre. Maine recycled is also CarbonNeutral®.

Stuart Fletcher  
General Manager,  
**Land Tasmania**

All photography has been taken by Tasmanian Government employees unless otherwise acknowledged.



# New imagery and elevation data available for **free** download

*Newly flown orthorectified aerial image of Strzelecki Peaks, Flinders Island.*

**The Tasmanian community** will soon have access to a plethora of new imagery and elevation data through the 2018/2019 Tasmanian Imagery Program. This up-to-date and accurate data will be available through a number of sources, including the LIST. The current flying season has been particularly busy with **Land Tasmania** collaborating with a number of organisations to co-fund imagery capture projects and a significant LiDAR project across the State.

Despite the inevitable Tasmanian weather delays and a number of severe bushfires impacting the Program, the contractors have been able to get the planes in the air to capture imagery for many urban areas in the north and south of the State. Excitingly, for Flinders Island residents and visitors alike, new high resolution imagery has been captured for the whole mainland of the island. The Department's Natural and Cultural Heritage Division and the Tasmanian Parks and Wildlife Service have

also commissioned capture for fire-affected areas in the Tasmanian Wilderness World Heritage Area, which will assist with rehabilitation works.

All new imagery will be incorporated into the LIST State Aerial Photo ortho-imagery basemap in the near future at <https://maps.thelist.tas.gov.au>

In addition to the imagery capture, **Land Tasmania** has partnered with the Tasmanian Flood Hazard Mapping Project to capture more than 12,000 km<sup>2</sup> of LiDAR for areas of the State affected by the severe floods of 2016. This data will provide accurate elevation information across these areas and underpin detailed flood modelling projects, along with the production of accurately defined flood event maps. The captured elevation data will also be incorporated into the State Digital Elevation Model and enable more accurate data capture across the **Land Tasmanian** data holdings.

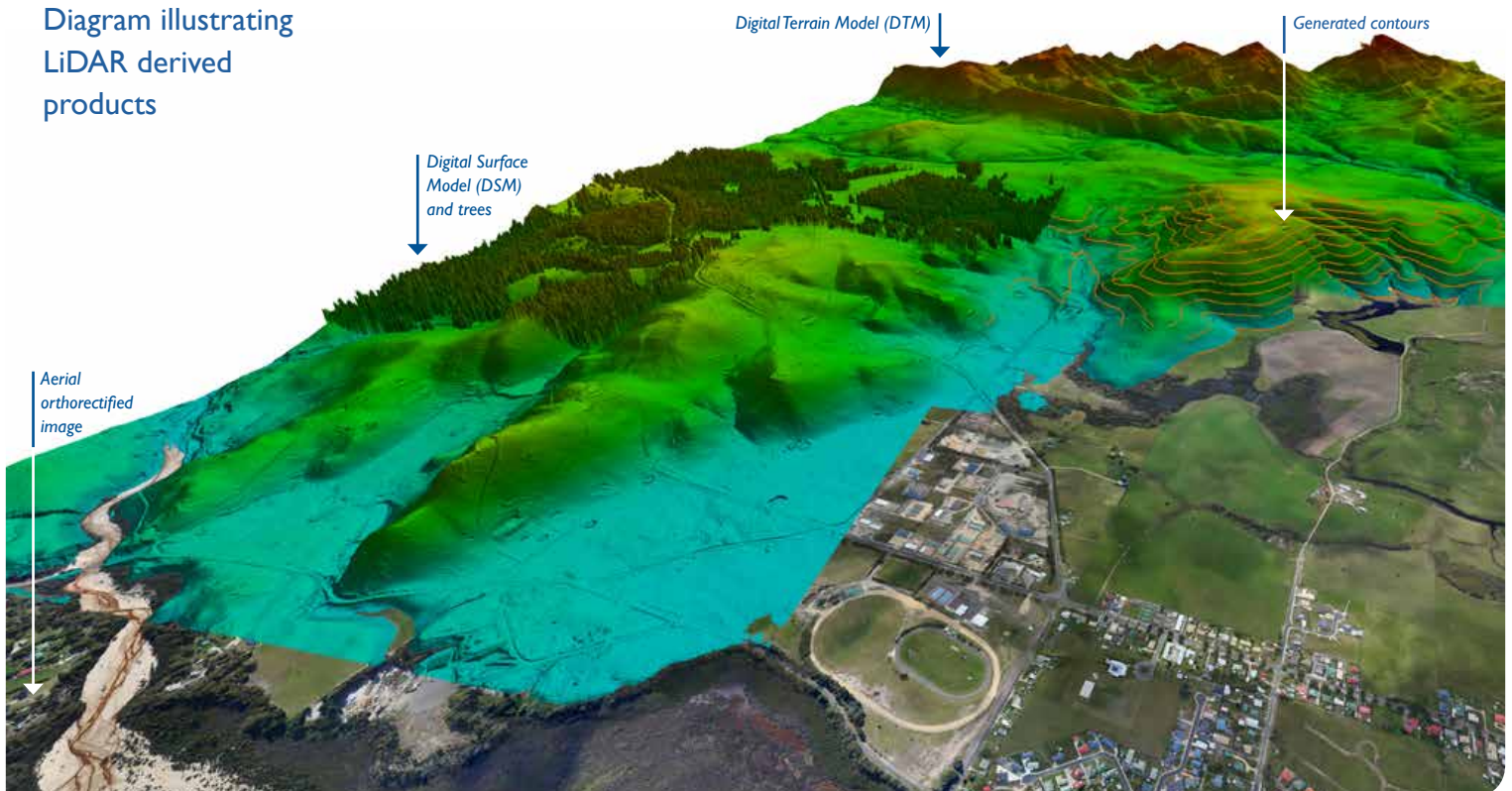
To date around 75 per cent of the LiDAR has been captured with the capture project scheduled for completion by the end of this financial year.

The new LiDAR data, as well as all existing holdings, are available for free download via the ELVIS site at <http://elevation.fsdf.org.au/> and as always the LIST holds a massive amount of freely accessible, viewable and downloadable data.



*Newly flown aerial orthorectified image of Spreyton, northern Tasmania.*

## Diagram illustrating LiDAR derived products





# Collaboration fuels GIS

## emergency response to fires

Breaks in vegetation are often effective in preventing fire spread.

### Up-to-date information

is crucial in any emergency. It helps authorities to establish the extent of a flood, fire or storm, predict the potential impact of the incident, mobilise the response, warn the public of future dangers, and manage post-incident rehabilitation work. Our role within **Land Tasmania's** Emergency Services (ES) GIS team is to help inform these decisions by gathering and dispersing real-time data through various mapping products.

Over the past fire season our efforts were boosted by interstate collaborators: GIS mappers from the ACT and NSW

worked in the Launceston and Burnie Incident Management Teams (IMT) and Aerial Intelligence Gathering platforms from the mainland were used to map fire activity. With access to this suite of local and interstate data-collection capabilities, we were providing situational awareness to the IMT and to firefighters on the ground via a phone or tablet. In this story, members of our **Land Tasmania** team provide insight into some of our newest resources.

Without question the technology is essential but it is our phenomenal team that makes me most proud.

On Christmas morning last year my staff were called in to join the emergency response; they have ended up working across 50 days of running fires, with at least as long in the mop-up and rehabilitation phases.

*“Our people, along with the collaborative platforms we provide, are the reasons why Land Tasmania's Emergency Services GIS team has fostered such an enviable reputation.”*

*Aaron Cashion, Emergency Services GIS Manager.*



**Robb Meijers**  
Senior Spatial Analyst

*Robb Meijers from ESGIS using real-time mapping with IMT Planning Officer, Eddie Staier to support response operations.*



*Using mobile technology in the air to capture fire activity.*

### Punching through the clouds

The situation and weather on the fireground are dynamic, and firefighting requirements are becoming more diverse. In the IMT I am responsible for gathering information and converting it into intelligence for the team under difficult, time-pressured conditions. This means we need a legion of different collection tools and methods to enable provision of timely, accurate data.

We've been able to access a number of satellite platforms to aid us in identifying thermal change, and providing periodic, high resolution, multi-spectral imagery.

Fixed wing aircraft equipped with laser scanners provide us prompt, on-demand, geo-rectified imagery of flame activity across the fireground in weather that would limit other aerial platforms, providing a precise view of where running fire edges are. Emergency Services (ES) GIS also capture our own intelligence from helicopters – mapping the fire edge and detecting hot spots using thermal imaging cameras to identify areas that may still pose risk.

In addition to remotely sensed data, our intelligence gathering techniques extend to the tracking of aircraft, vehicles, machinery, and remote area firefighters across

the fireground. ESGIS have deployed a number of mobile applications to enable firefighters to provide detailed information back to the IMT on areas such as hazardous trees, asset protection, property damage and rehabilitation. These all feed real-time data into LISTmap to assist the IMT to make timely decisions.

*“Working in such a dynamic, fast-paced environment, presenting such varied and bespoke problems, it's fantastic to have these tools at our disposal.”*

*Robb Meijers, Senior Spatial Analyst.*





**Kat Gardiner-Wyatt**  
Graduate Spatial Information Officer



## Realising the potential of Web Services

LISTmap and the Common Operating Platform (COP) used by Tasmania's Emergency Services justifiably receive enthusiastic feedback when used in any incident response because they provide simple access to multiple layers of data through a single portal. But as a technical person, I feel the true potential of our system is in the web services that underlie it all.

The web services we supply have the power to integrate and deliver data from various sources, such as mobile / web apps to full blown GIS's in a standardised way. For example, the mobile apps that have been created for tasks such as risk assessment and property damage enable crews with only limited technical knowledge the ability to send data to the IMT in real-time, including information on risks to specific properties or damage to infrastructure. This ability is invaluable to the planning of response and recovery efforts born from an emergency incident.



**Bernard Plumpton,**  
Tasmania Fire Service (TFS)  
operating a thermal imaging camera to detect fire hotspots from a helicopter.

## Putting fires on the map

A big-ticket item from the recent fire season was our ability to put maps, with real-time updates, into the hands of every person across the incident response. These digital maps look just like printed ones but are downloaded directly into tablets and phones, allowing the devices to switch on the GPS. This then shows firefighters their exact location on the map.

Historically, physical maps were printed at the end of the day and distributed the following morning. The problem with this approach was that the map was out of date by the time it was distributed, and there certainly weren't any blue dots showing the firefighters exactly where they were. We can still provide physical maps when requested and sometimes interstate crews like them to gain the 'bigger picture'. But within the Incident Management Centre, for instance, we projected a map on the wall that showed real-time data

coming from the fireground: the aerial reconnaissance; the satellite imagery; the trackers; and the field apps.

I'm so thankful that Aaron asked me to join his team.

*“Situations like a fire are stressful because the consequences can be so devastating for people, infrastructure and the environment. Having this awareness in the back of our minds reminds us to push ourselves to constantly do the best we can possibly do.”*

*Kat Gardiner-Wyatt, Graduate Spatial Information Officer.*

I am continually learning more about how incidents are managed and the way fire behaves under certain conditions. This provides me with a greater appreciation of my role in a response.



**Julian Ward**  
Program Leader (LIST Services)

*“On the non-technical side of the work we do, I see that Land Tasmania's efforts to build strong relationships with various organisations and their willingness to work together form a core component in Tasmania's ability to effectively respond to emergency incidents.*

*Julian Ward, Program Leader (LIST Services).*

# Consultation sought on *Strata Titles Act*

## Consultation

**across** the Tasmanian community is being sought regarding the *Strata Titles Act 1998* (the Act), which regulates strata developments and day-to-day strata living in Tasmania.

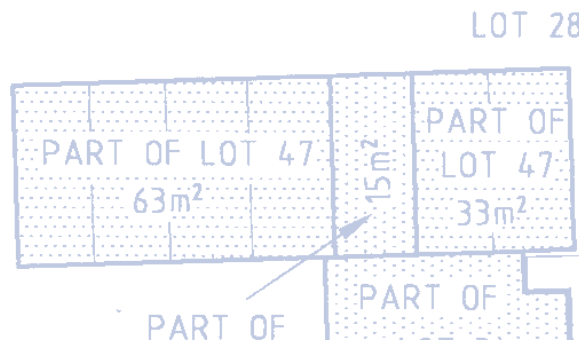
As part of the Department's legislative program, the Recorder of Titles has undertaken a review of the Act. A Consultation Paper was previously prepared for release with key stakeholders and, in response to issues raised during the first stage of consultation, a second stage of consultation is now planned.

A second Consultation Paper will be prepared to seek comment on issues such as:

- strata dispute resolution
- insurance
- service infrastructure
- issues relating to smaller developments
- regulation of strata managers

A reference group will be established to assist in the secondary stage of the review, including strata owners, strata managers, the Law Society, the Property Institute of Tasmania, the real estate industry, the insurance industry and government departments.

In addition to creating proposed amendments to benefit the Strata Community of Tasmania and focus on improving the efficiency and effectiveness of strata living in Tasmania, policies within the Land Titles Office will be revamped to focus on reducing red tape and capturing internal efficiencies.



# Digital enhancements

*further improve access to LTO information*

## The Land Titles Office (LTO)

is currently undergoing crucial business transformation to ensure its practices, procedures and processes are fully adapted to suit the modern digital environment. The enhancements being made are in line with the Agency's plan to improve access to information by transitioning staff to work digitally.

Some of the improvements being pursued include:

- the automatic registration of caveats lodged through the Tasmanian Online Land Dealings System;
- transition to electronic certificates of title;
- the introduction of improved searching capability for connecting a revocation of a power of attorney and the power of attorney being revoked, and the ability to search powers of attorney and associated documents that have been lodged but not yet registered (unregistered);

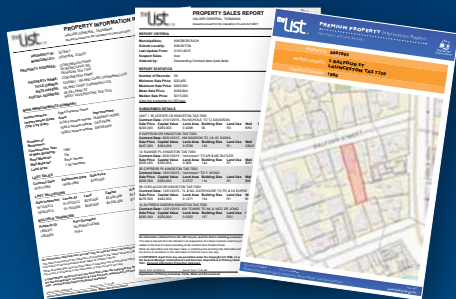
- automating notices required to be issued by the LTO;
- streamlining the process of issuing requisitions to ensure a consistent approach is taken; and
- digitisation of historical land records.

The changes that the LTO is making to transition to the contemporary technological age will offer an increased convenience for clients such as legal practitioners, conveyancers, financial institutions and mortgage processors. These changes will also serve to cut the red tape surrounding the LTO's processes, allowing for a more expedient service.



## Land Information System Tasmania

### the List Premium Property Report



Property information, sales and statistics in a single report



[www.thelist.tas.gov.au](http://www.thelist.tas.gov.au)

#### Client Services contact details

Normal operating hours for all client enquiries are:

9.00am – 5.00pm Monday to Friday

#### LIST Helpdesk

E-mail [listhelp@dpiwwe.tas.gov.au](mailto:listhelp@dpiwwe.tas.gov.au)

Phone (03) 6165 4444

Web via the client request form

#### TASMAP

E-mail [tasmap@dpiwwe.tas.gov.au](mailto:tasmap@dpiwwe.tas.gov.au)

Phone (03) 6165 4444

Order online at [www.tasmap.tas.gov.au](http://www.tasmap.tas.gov.au)

#### Spatial Data / Agreements / Copyright

Email [listhelp@dpiwwe.tas.gov.au](mailto:listhelp@dpiwwe.tas.gov.au)

Phone (03) 6165 4444

# Valuations

*highlight property market growth*

## The Office of the Valuer-General

provides rating and taxing authorities with market-based Adjustment Factors that are applied to existing government valuations in-between the current six-yearly Fresh Valuation cycle. These factors help minimise the big fluctuations in valuations that can occur following the completion of a Fresh Valuation in a municipal area.

Adjustment Factors are determined annually for Land Value, and every two years for Capital Value and Assessed Annual Value. They are published in the Government Gazette in March of each year.

The Valuer-General uses property sales information, current rental data and other relevant market evidence to determine the current levels of value of each property class within a municipality or locality, or group of localities within a municipal area.

Adjustment Factors were gazetted in March this year for Land Value, Capital Value and Assessed Annual Value for 19 municipal areas in Tasmania with the remaining 10 municipalities subject to a Fresh Valuation to be issued this year.

The Tasmanian real estate market has experienced solid growth in demand and prices in the last two years. This growth has resulted in increases in Adjustment Factors for all municipalities, which highlights the increasing value of the property market in Tasmania.

*The demand for properties in Derby as a result of the development of the Blue Derby Mountain Bike Trails has resulted in a 50 per cent increase in Capital Value of residential properties over the last two years.*



Aerial image of the Blue Derby Mountain Bike Park's iconic feature 'Twisties' on the Sawtooth trail. The Cascade River features to the left.

## GDA2020 update

The Intergovernmental Committee on Surveying and Mapping (ICSM) continues to manage the implementation of Australia's new modernised datum, GDA2020. All jurisdictions, including Tasmania, are refining and adjusting their implementation plans to accommodate the systems, and data upgrades and updates that are required. Tasmania is in the process of appointing a project manager to assist with engagement within the Department, across government,

and with other external stakeholders. ICSM has commissioned consulting company North Road to undertake code changes to the QGIS (an open source GIS package) installation and transformation packages that leverage work being done internationally by the maintainers of the Projection and transformation libraries. This will directly assist Australian jurisdictions working both in the QGIS and open source arena, and the proprietary environments such as ESRI.

# News in brief...



1:50 000 maps for sale in the Hobart Service Tasmania outlet after the launch of the product in 2015.

## Paper maps alive and well

In 2015 **Land Tasmania** boldly took steps to take mapping into the 21st century and, through the 'Future Directions' review, undertook a public consultation process that led to a number of modernisation initiatives. Among the most successful outcomes were digital versions of all mapping products available in a range of formats, the immensely popular multiscale topographic basemap, and the introduction of a new modern base map series.

Four years later, however, the surprising trend from *Future Directions* is the continuing popularity of the paper map. Even with so many other options now available, a large percentage of the community still wants a paper map to have and hold. National Park and Recreation maps sales are as strong as ever, and the 1:50,000 topographic series continues to gain popularity as **Land Tasmania** strives to achieve total coverage of the State in hard copy products.

The future is about choice and flexibility, but it is also about what works for the community. It is obvious that paper maps are definitely here to stay!

## WHAT'S IN A NAME?

In the 1950s it was proposed that the estuary of the River Tamar, named Port Dalrymple, be changed to Port Launceston.

At this time the estuary had been named Port Dalrymple for more than 100 years. Governor Hunter of New South Wales had given it this name around 1798 following the first European sighting of the inlet by explorers Bass and Flinders. The name itself recognised the colourful Alexander Dalrymple, who was then the hydrographer to the Admiralty in London.

The proposal to change the name was the subject of considerable press publicity and public controversy. The Nomenclature Board resolved at its meeting of March 1955 that due to the historical significance and longstanding nature of the name, Port Dalrymple would be retained.

For history and information on this and thousands more names across Tasmania, make sure you check out [www.placenames.tas.gov.au](http://www.placenames.tas.gov.au)

## Site selection for new Continuously Operating Reference Stations

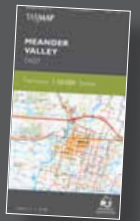
As the Australian Government commences the rollout of the National Positioning Infrastructure (NPI) initiatives that flow from last year's federal budget announcements, Tasmania is working with Geoscience Australia to establish a new Continuously Operating Reference Station (CORS) in North East Tasmania. At present, site selection is being progressed for a station at Derby, with surveyors from **Land Tasmania** providing local knowledge of land tenure and coordination of activities.

## NEW TASMAM PRODUCTS

Recently released map products are now available for purchase online at [www.tasmap.tas.gov.au](http://www.tasmap.tas.gov.au) or from Service Tasmania shops and TASMAM resellers.

### 1:50,000 Topographic Maps

- Banks Strait
- Black Bluff
- Kent Group
- Meander Valley



### Coming Soon

- Dazzler
- Murchison
- Palooa

### National Park, Walk and Recreation Maps

- Maria Island National Park
- Walls of Jerusalem (reprint)
- Peninsula Walks
- Highland Lakes
- Mount Field Walk Map
- Bruny Island Walks
- Wellington Park Recreation Map
- Frenchmans Cap Walk Map



### Digital downloads

- National Park, Walk and Recreation Maps
- 1:50,000 Topographic Maps – complete coverage - Now available as a statewide coverage on USB drive.

### Historical map reproductions

- Six new high quality reproductions from the TASMAM Historical Map collection.

Now available online at  
[www.tasmap.tas.gov.au](http://www.tasmap.tas.gov.au)

## Direct enquiries to

Manager - Service Delivery

**Land Tasmania**

GPO Box 44, Hobart, Tas 7001

T: (03) 6165 4444

E: [listhelp@dpipwe.tas.gov.au](mailto:listhelp@dpipwe.tas.gov.au)

W: [www.dpipwe.tas.gov.au/locationmatters](http://www.dpipwe.tas.gov.au/locationmatters)

CD11530

the **list**

[www.thelist.tas.gov.au](http://www.thelist.tas.gov.au)

**TASMAP**

[www.tasmap.tas.gov.au](http://www.tasmap.tas.gov.au)