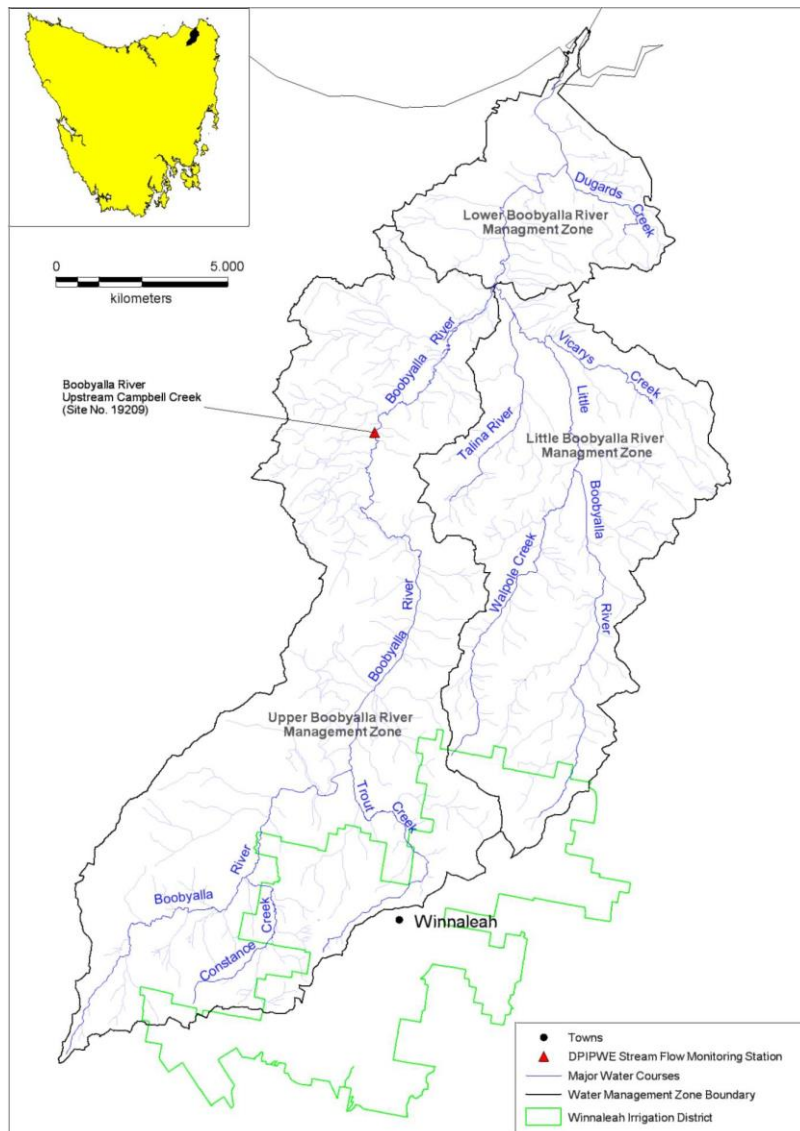


**Draft Gazette notice**  
**Water Management Act 1999**

**Section 11 Exemption Order**  
**Cease-to-take flow thresholds in the Boobyalla River catchment**

I, Guy Barnett, Minister for Primary Industries and Water, acting pursuant to section 11 of the *Water Management Act 1999*, hereby exempt all licensees with a water allocation authorising the taking of water in the Boobyalla River catchment (as shown in Figure 1), from the cease-to-take flow thresholds specified in Table 6 of section 5.1.1 of the *Boobyalla River Catchment Water Management Plan April 2012*.



**Figure 1.** Boobyalla River Catchment

Persons to whom this exemption applies are subject to the following conditions:

- (1) The taking of water from a watercourse, other than for stock and domestic purposes through rights under Part 5 of the Act, will not be permitted when the measured flow drops to the thresholds set out in Table I.

**Table I.** Monthly cease-to-take flow threshold for the Boobyalla River catchment (measured at the site of the Department's stream flow gauging station on the Boobyalla River upstream of Campbell Creek).

<b>Month</b>	<b>Cease-to-take flow threshold (ML/day)</b>
January	5
February	2
March	3
April	6
May	9
June	22
July	47
August	59
September	39
October	20
November	13
December	11

- (2) All other requirements set out in the *Boobyalla River Catchment Water Management Plan April 2012* relating to the cease-to-take flow provision apply.

This exemption takes effect on 27 October 2021 and remains in force for a period of five years unless otherwise revoked.

Expressions used in this exemption have the same meaning as in the *Water Management Act 1999*.

Guy Barnett  
**MINISTER FOR PRIMARY INDUSTRIES AND WATER**

Dated this 27th day of October 2021

### **Information**

The purpose of this Order is to continue an exemption that has been in place since 2016, that exempts licensees in the Boobyalla River Catchment Water Management Plan area from the requirements set out in Table 5 of the *Boobyalla River Catchment Water Management Plan April 2012*. A condition of the exemption is that licensees are subject to an alternative, lower cease to take threshold as specified in Table I of this Order.

The cease-to-take flow thresholds in the *Boobyalla River Catchment Water Management Plan April 2012* were based on conservative environmental flow assessments. Since the Plan took effect a more detailed catchment specific assessment has been undertaken indicating that the current cease-to-take flow thresholds do not adequately reflect the variable and intermittent flow regimes prevailing in this catchment. This exemption takes effect on the day upon which it is gazetted and remains in force for a period of five years or until the Boobyalla River Catchment Water Management Plan is reviewed, whichever is sooner.