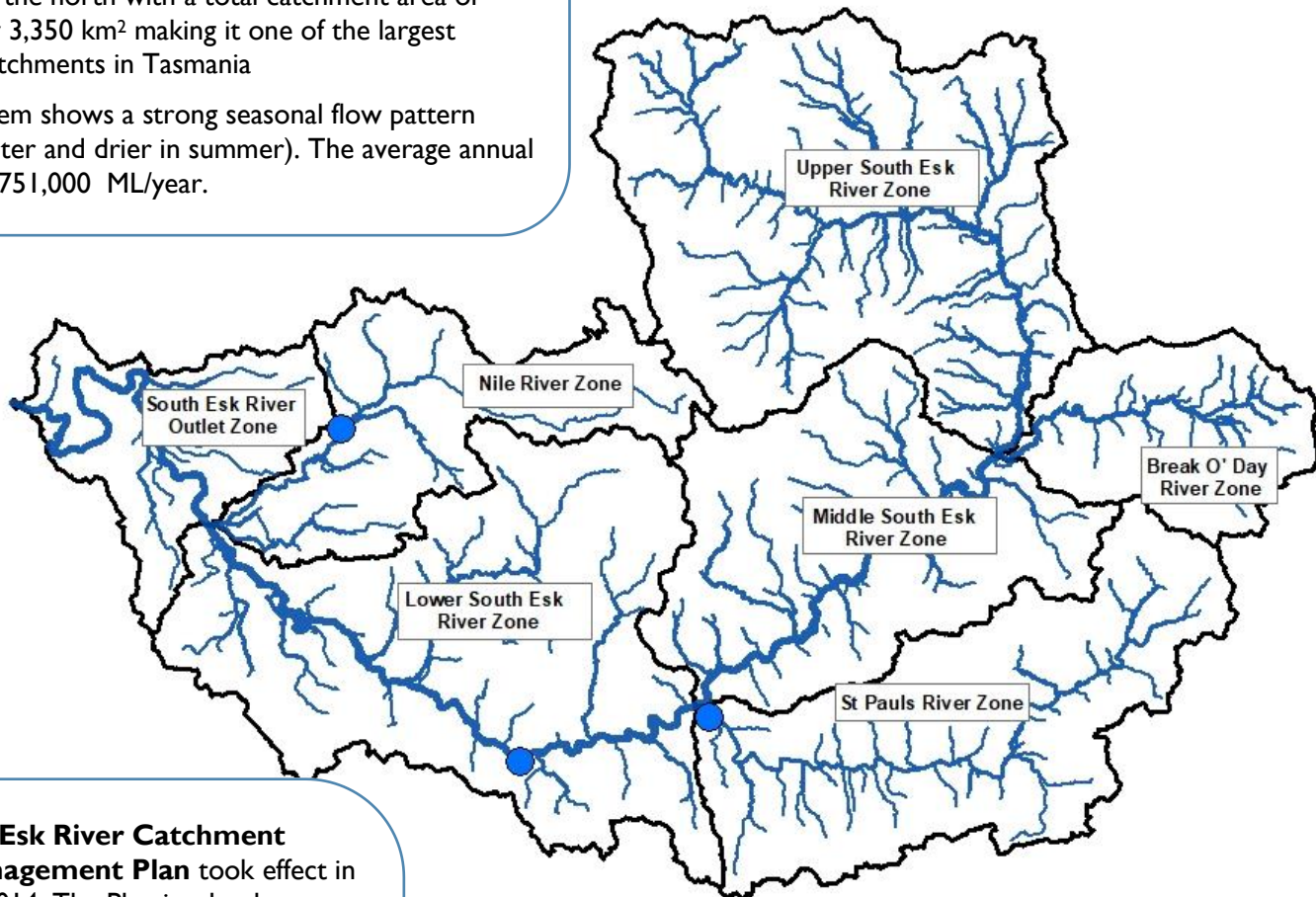


# SOUTH ESK RIVER CATCHMENT ANNUAL REPORT 2020/21

**The South Esk River catchment** (above its confluence with the Macquarie River) is located in the north-east and midlands of Tasmania. The catchment rises in the Fingal Tier in the east and is bounded by Ben Lomond and Mt. Saddleback to the north with a total catchment area of approximately 3,350 km<sup>2</sup> making it one of the largest agricultural catchments in Tasmania

The river system shows a strong seasonal flow pattern (wetter in winter and drier in summer). The average annual water yield is 751,000 ML/year.



**The South Esk River Catchment Water Management Plan** took effect in December 2014. The Plan is a legal document prepared in accordance with the *Water Management Act 1999*.

The Plan sets out monthly cease to take thresholds for three zones:

- South Esk and Break O' Day Rivers (measured at the South Esk at Llewellyn stream flow gauging station),
- St Pauls River (measured at St Pauls above South Esk),
- Nile River (measured at Nile at Deddington)

CTT thresholds were reviewed to assess access to water during winter and revised thresholds came into effect in 2017.

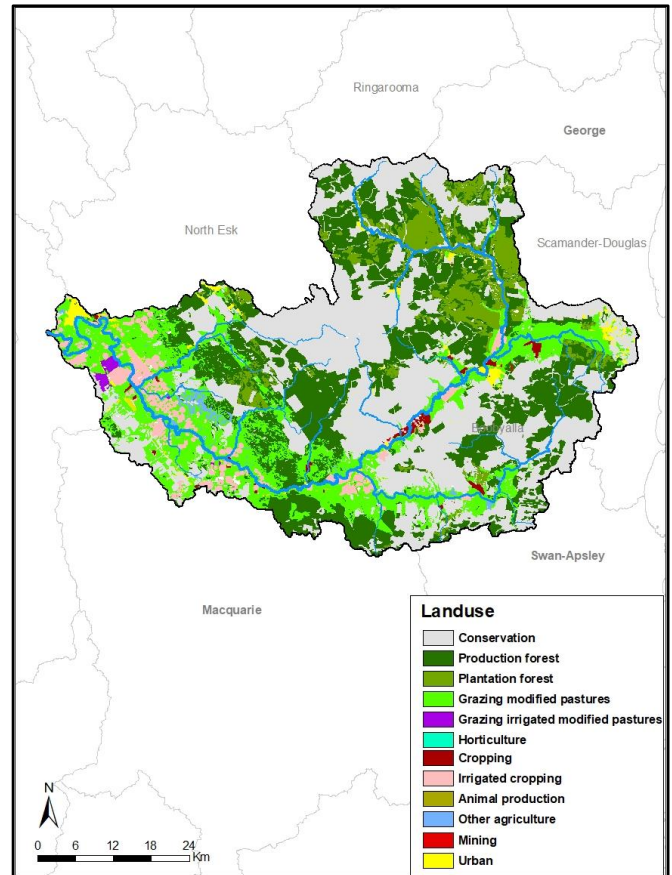
For full details of the current Water Plan and the revised thresholds go to the [DPIPWE Water website](#).

## CATCHMENT LAND USE

Approximately 35% of the catchment is under production native forests and plantation forestry. A further 23% is used for agricultural purposes with the remaining area supporting a diversity of land uses including mining, urban areas and conservation land. The catchment includes the townships of St Marys, Mathinna, Fingal and Avoca in the upper half of the catchment, and Nile, Evandale and Perth being the major population centres in the lower part of the catchment.

## RIVER HEALTH

DPIPWE has four long-term river health monitoring sites in the catchment. These sites are on the South Esk River at Perth (lower reach), Llewellyn (mid reach), Heffords Road (mid reach) and Sandhurst Road (upper reach). The monitoring results indicate that the South Esk River has poor to moderate condition in the lower to middle reaches, and good to excellent condition in the upper reaches. The lower reaches of the river have been in poor condition since 1994 (when monitoring began). During recent periods of low flow, high loads of fine sediment and algae have been recorded on the streambed in the lower river. Due to the COVID-19 situation, no field work was undertaken in the 2020/21 year.



## HYDROLOGY SUMMARY

The following pages show plots of long-term streamflow (full period of available record), short term flow and rainfall (last 5 water years) for the South Esk at Llewellyn gauge site. Also included are last years flow, rainfall and restriction data, split into winter (May 2020 – November 2020) and summer (December 2020 – April 2021) seasons for the three management points within the catchment: South Esk River at Llewellyn, St Pauls River above South Esk, and Nile at Deddington.



For further information contact your local **Regional Water Management Officer** at the **Department of Primary Industries, Parks, Water and Environment**:  
Phone: 1300 368 550  
Email: [Water.Operations@dPIPWE.tas.gov.au](mailto:Water.Operations@dPIPWE.tas.gov.au)  
[dPIPWE.tas.gov.au/water](http://dPIPWE.tas.gov.au/water)

Full flow record, 1988 - 2021

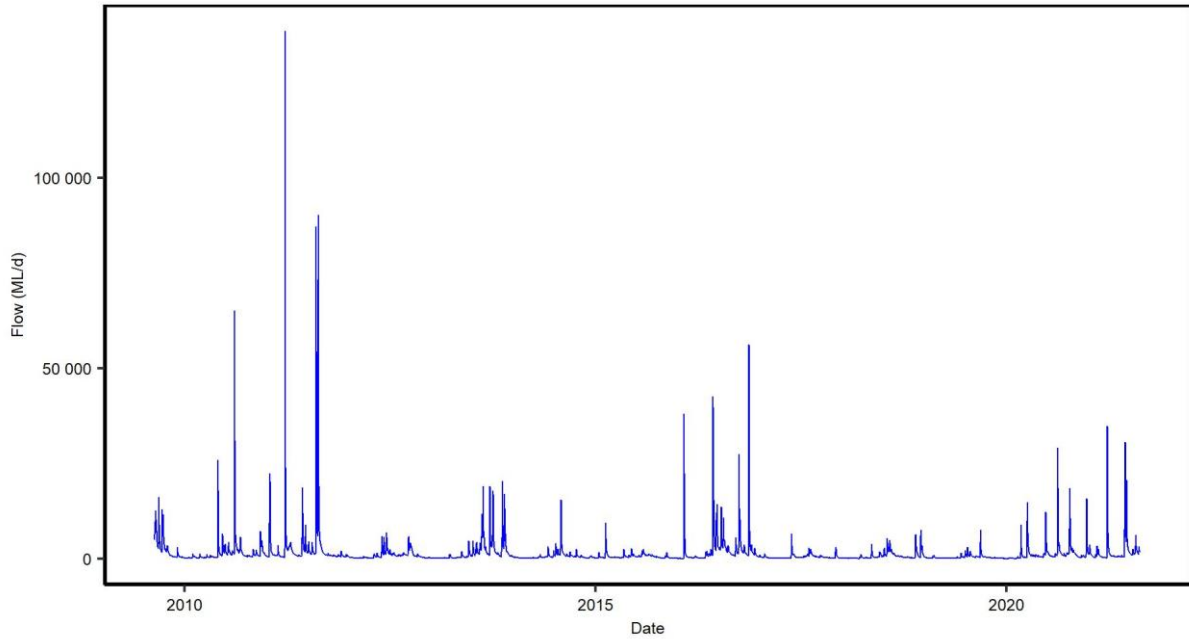


Figure 1. Mean daily flow at the South Esk River at Llewellyn streamflow gauging station, whole of record.

Full record of yields in water years 2009 - 2020

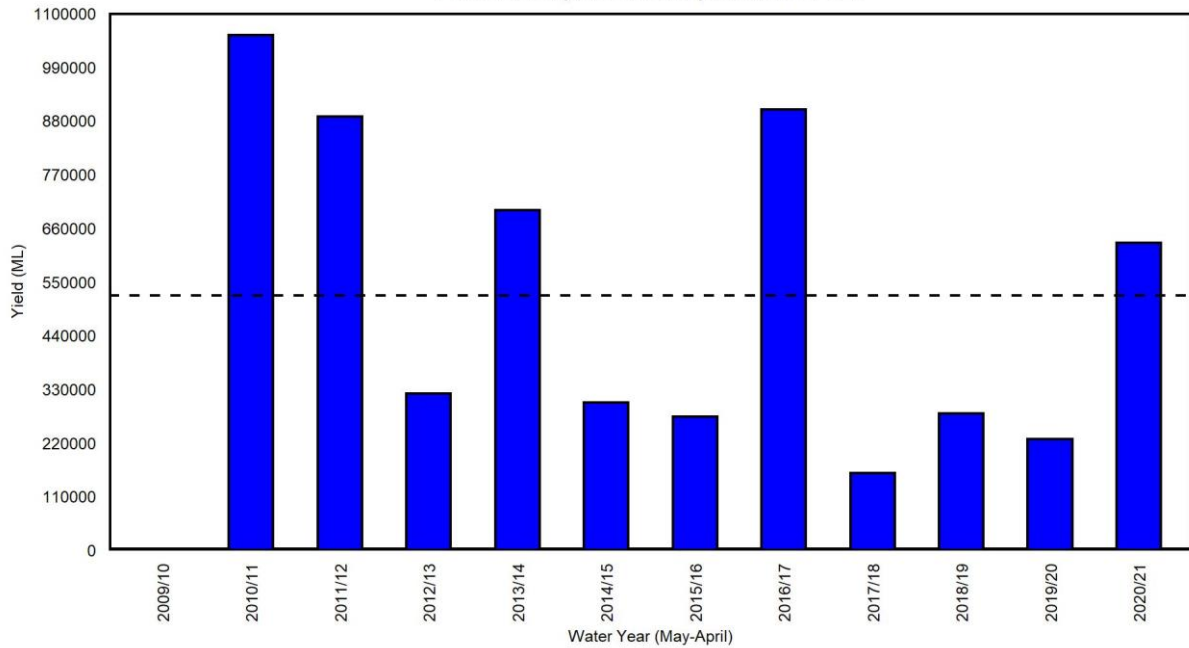
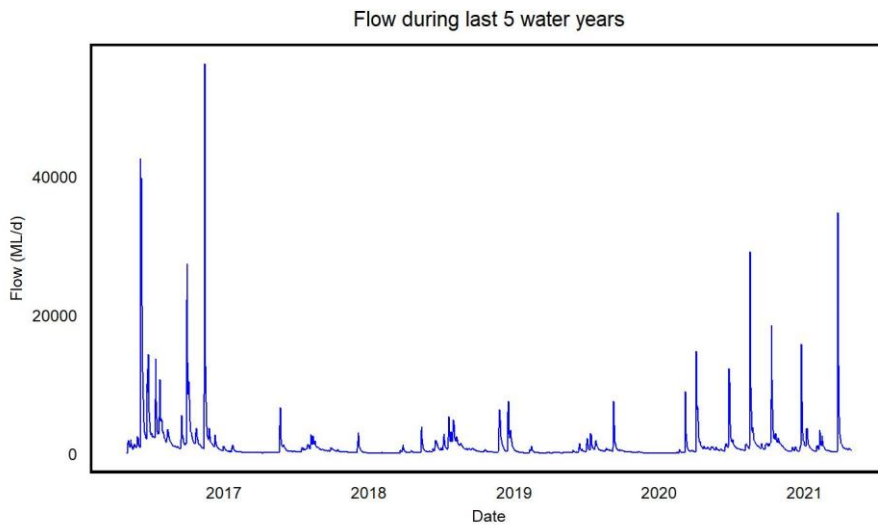
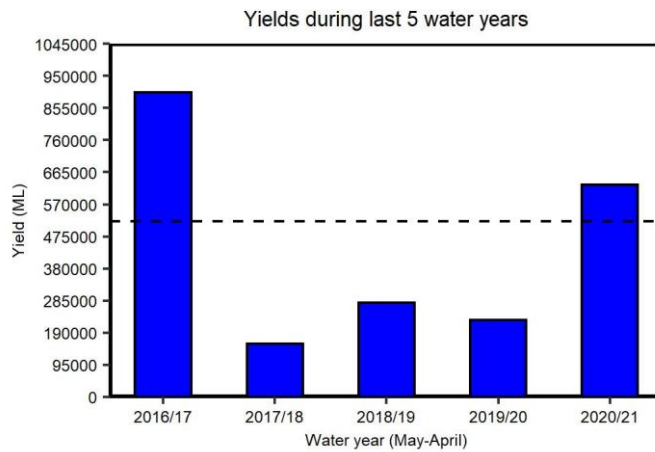


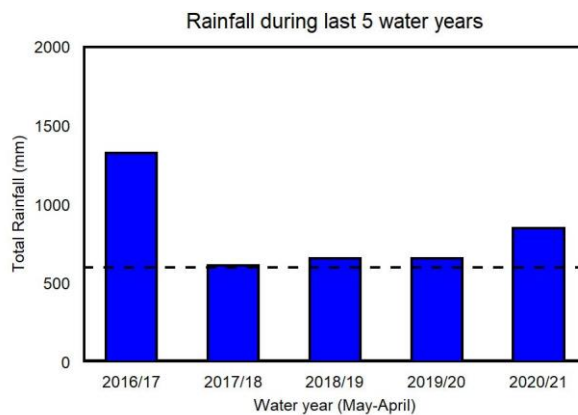
Figure 2. Yields in the South Esk River at Llewellyn streamflow gauging station. Water years with <95% of the daily flow record available are excluded. The long-term mean yield is shown as the dashed horizontal black line (520,500 ML).



**Figure 3.** Mean daily flow in the South Esk River at Llewellyn streamflow gauging station for the last five years.

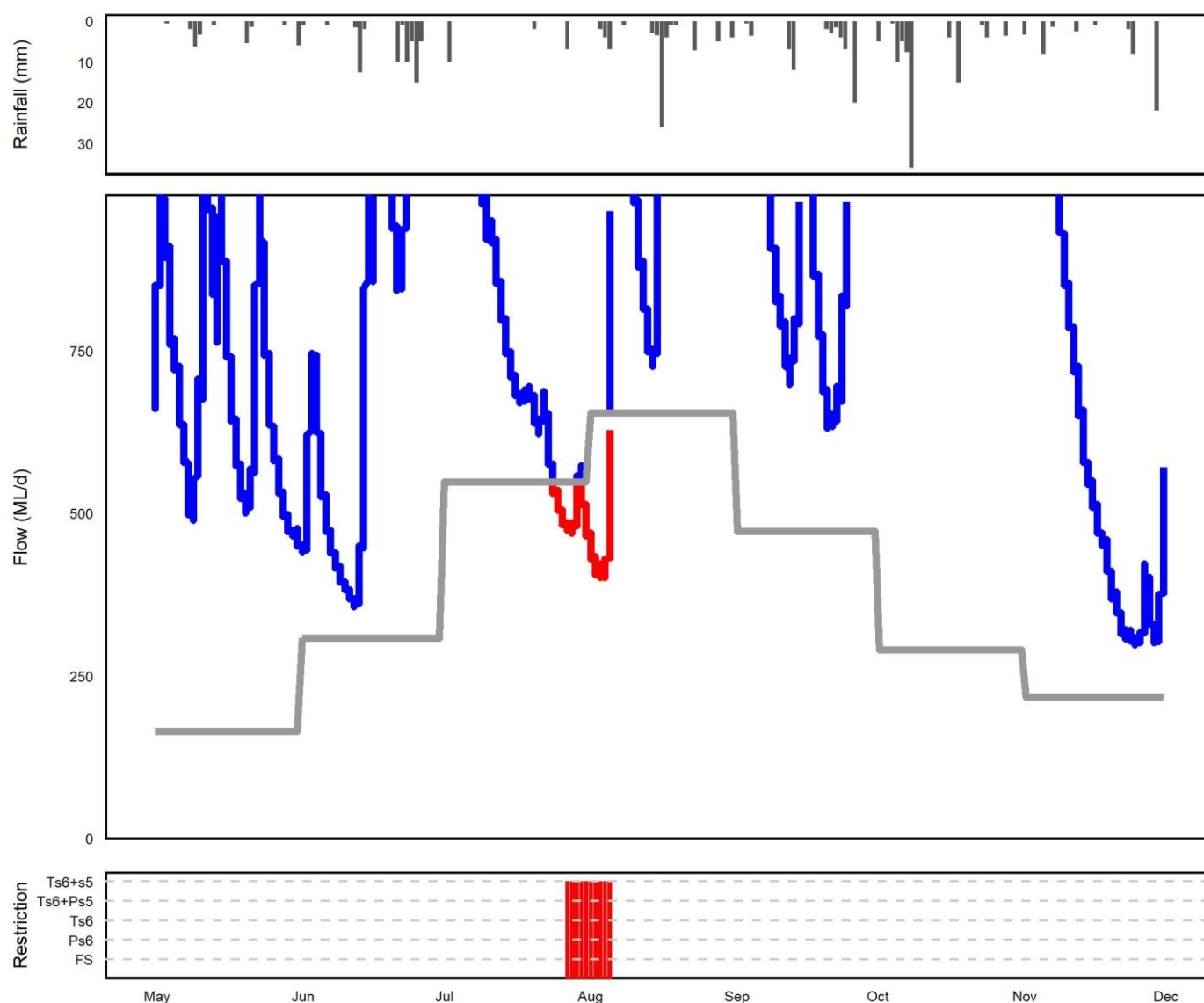


**Figure 4.** Yields in the South Esk River at Llewellyn streamflow gauging station for the last five years. The long-term mean yield is shown as the dashed horizontal black line (520,500 ML).



**Figure 5.** Total rainfall at the Mathinna (Fingal Rd) BoM weather station during the last five water years. The long-term mean total rainfall (600 mm) is shown as the black horizontal dashed line.

### Rainfall, low flows and restriction periods during winter 2020/2021



## SOUTH ESK AT LLEWELLYN

**Figure 6.** Summary of rainfall, low flows and restrictions in the South Esk catchment during winter (May-November) 2020.

Top plot: daily rainfall **Mathinna (Fingal Rd)** BoM site.

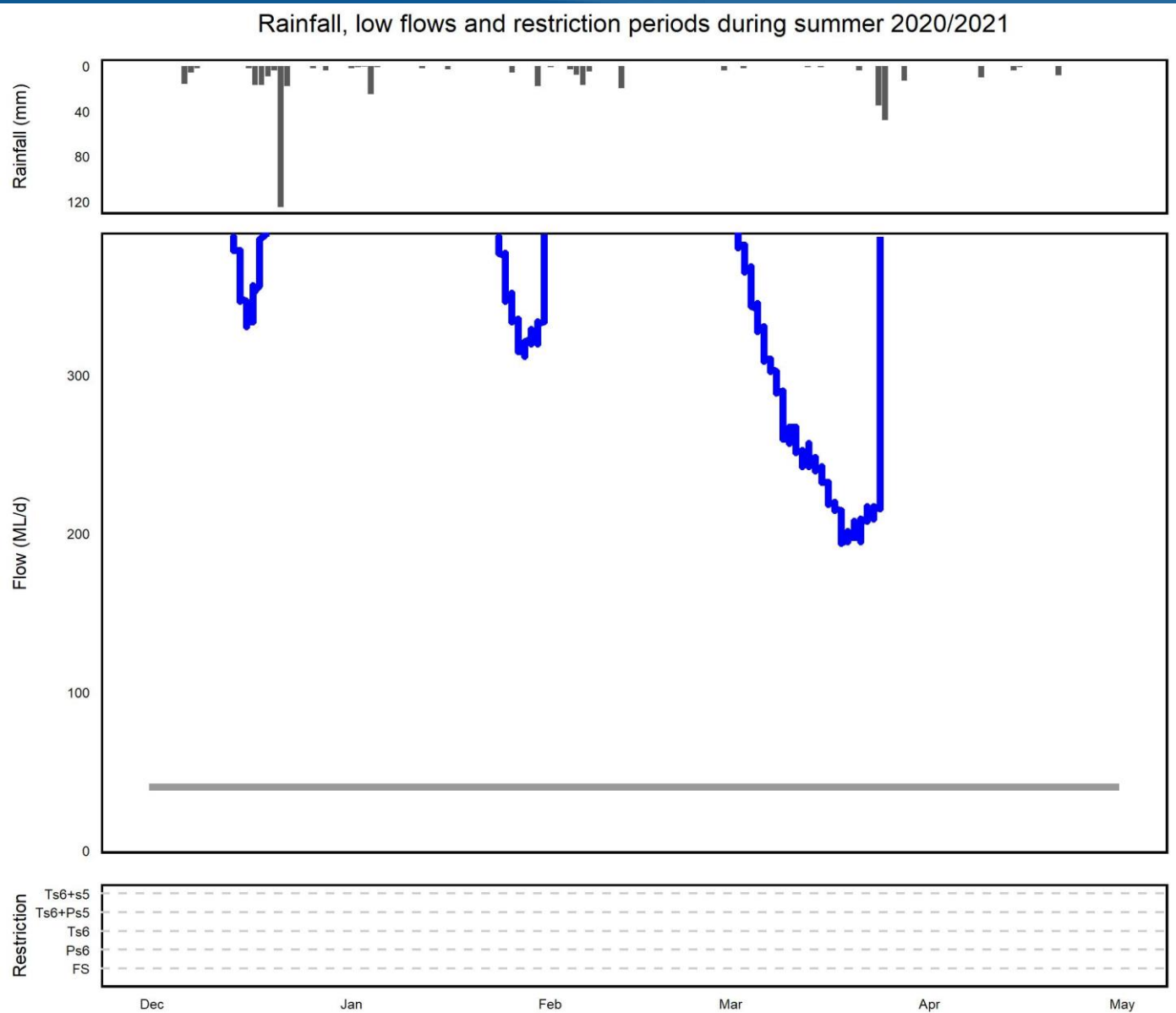
Middle plot: instantaneous flow (<1000 ML) South Esk River at Llewellyn station (compliance flow site).

Bottom plot: days when restrictions were in place.

**Table 1.** Restriction levels and total days at each level for the winter period (May - November 2019).

Restriction Type	Days at restriction level in 2019/20	Days at restriction level in 2020/21
Flow Sharing	0	0
Partial Surety 6	0	0
Total Surety 6	0	0
Total Surety 6 + Partial Surety 5	3	0
Total Surety 6 + Total Surety 5	132	10

For further information contact your local Regional Water Management Officer at the Department of Primary Industries, Parks, Water and Environment:  
 Phone: 1300 368 550  
 Email: [Water.Operations@dpipwe.tas.gov.au](mailto:Water.Operations@dpipwe.tas.gov.au)  
[dpipwe.tas.gov.au/water](http://dpipwe.tas.gov.au/water)



## SOUTH ESK AT LLEWELLYN

**Figure 7.** Summary of rainfall, low flows and restrictions in the South Esk catchment during summer 2020/21 (Dec-April).

Top plot: daily rainfall (**Mathinna (Fingal Rd)** BoM site).

Middle plot: instantaneous flow (<400 ML) South Esk River at Llewellyn station (compliance flow site).

Bottom plot: days when restrictions were in place.

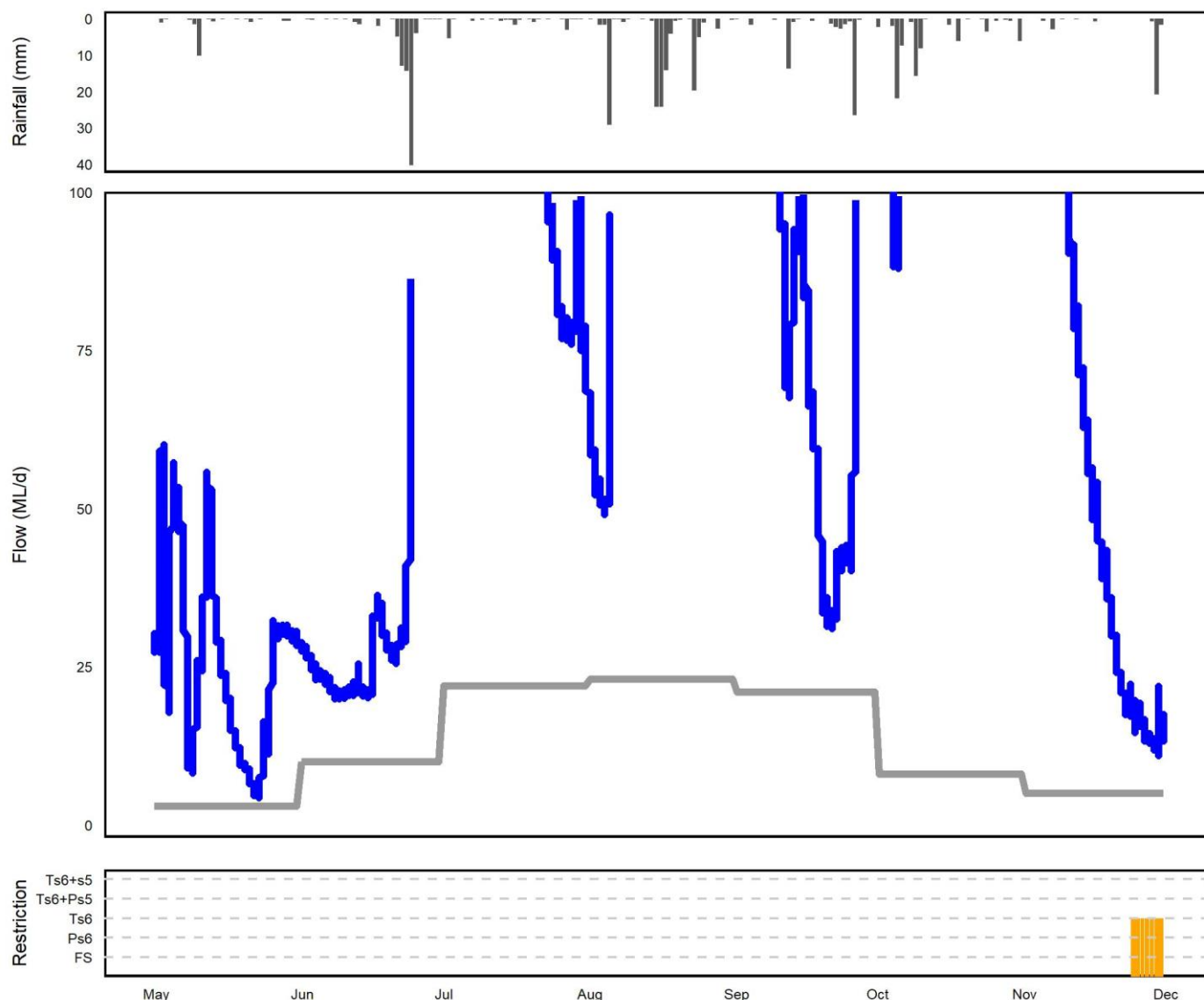
**NOTE: Refer to the last page for a 'legend' and description on how to interpret these plots**

Table 2 Restriction levels and total days at each level for the summer period (Dec 2020 – April 2021).

Restriction Type	Days at restriction level in 2019/20	Days at restriction level in 2020/21
Flow Sharing	0	0
Partial Surety 6	0	0
Total Surety 6	7	0
Total Surety 6 + Partial Surety 5	17	0
Total Surety 6 + Total Surety 5	59	0

For further information contact your local Regional Water Management Officer at the Department of Primary Industries, Parks, Water and Environment:  
 Phone: 1300 368 550  
 Email: [Water.Operations@dPIPWE.tas.gov.au](mailto:Water.Operations@dPIPWE.tas.gov.au)  
[dPIPWE.tas.gov.au/water](http://dPIPWE.tas.gov.au/water)

## Rainfall, low flows and restriction periods during winter 2020/2021



## ST PAULS UPSTREAM SOUTH ESK

**Figure 8.** Summary of rainfall, low flows and restrictions in the St Pauls catchment during winter (May-November) 2020.

Top plot: daily rainfall (**Lewis Hill (St Pauls River) BoM** site).

Middle plot: instantaneous flow (<100 ML) St Pauls River upstream South Esk station (compliance flow site).

Bottom plot: days when restrictions were in place.

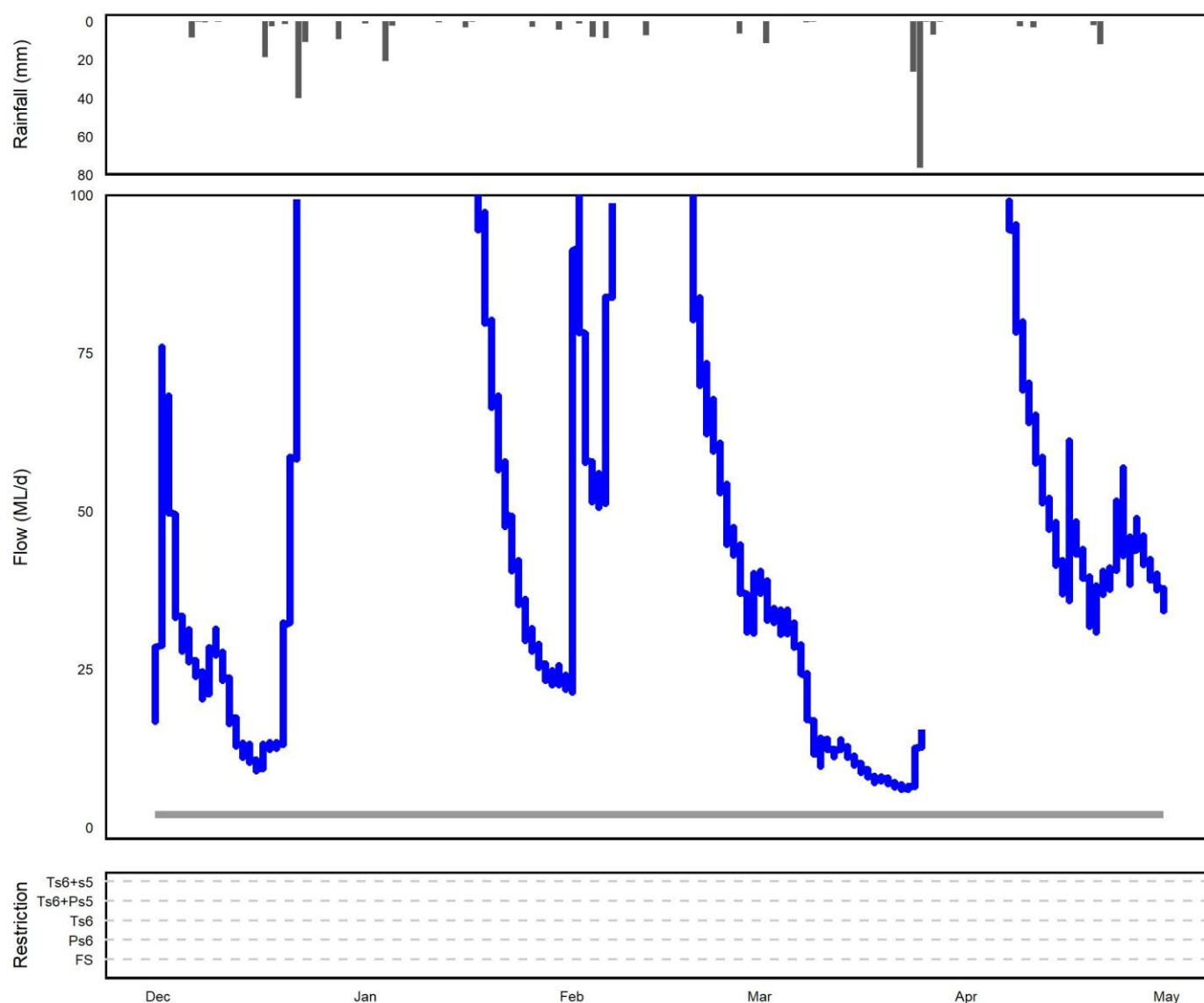
**NOTE: Refer to the last page for a 'legend' and description on how to interpret these plots**

Table 3 Restriction levels and total days at each level for the winter period (May - November 2020).

Restriction Type	Days at restriction level in 2019/20	Days at restriction level in 2020/21
Flow Sharing	0	0
Partial Surety 6	0	0
Total Surety 6	0	7
Total Surety 6 + Partial Surety 5	0	0
Total Surety 6 + Total Surety 5	<b>188</b>	<b>0</b>

For further information contact your local Regional Water Management Officer at the Department of Primary Industries, Parks, Water and Environment:  
 Phone: 1300 368 550  
 Email: [Water.Operations@dPIPWE.tas.gov.au](mailto:Water.Operations@dPIPWE.tas.gov.au)  
[dPIPWE.tas.gov.au/water](http://dPIPWE.tas.gov.au/water)

## Rainfall, low flows and restriction periods during summer 2020/2021



## ST PAULS UPSTREAM SOUTH ESK

**Figure 9.** Summary of rainfall, low flows and restrictions in the St Pauls catchment during summer 2020/21 (Dec-April).

Top plot: daily rainfall (**Lewis Hill (St Pauls River)** BoM site).

Middle plot: instantaneous flow (<100 ML) St Pauls River upstream South Esk (compliance flow site).

Bottom plot: days when restrictions were in place.

**NOTE: Refer to the last page for a 'legend' and description on how to interpret these plots**

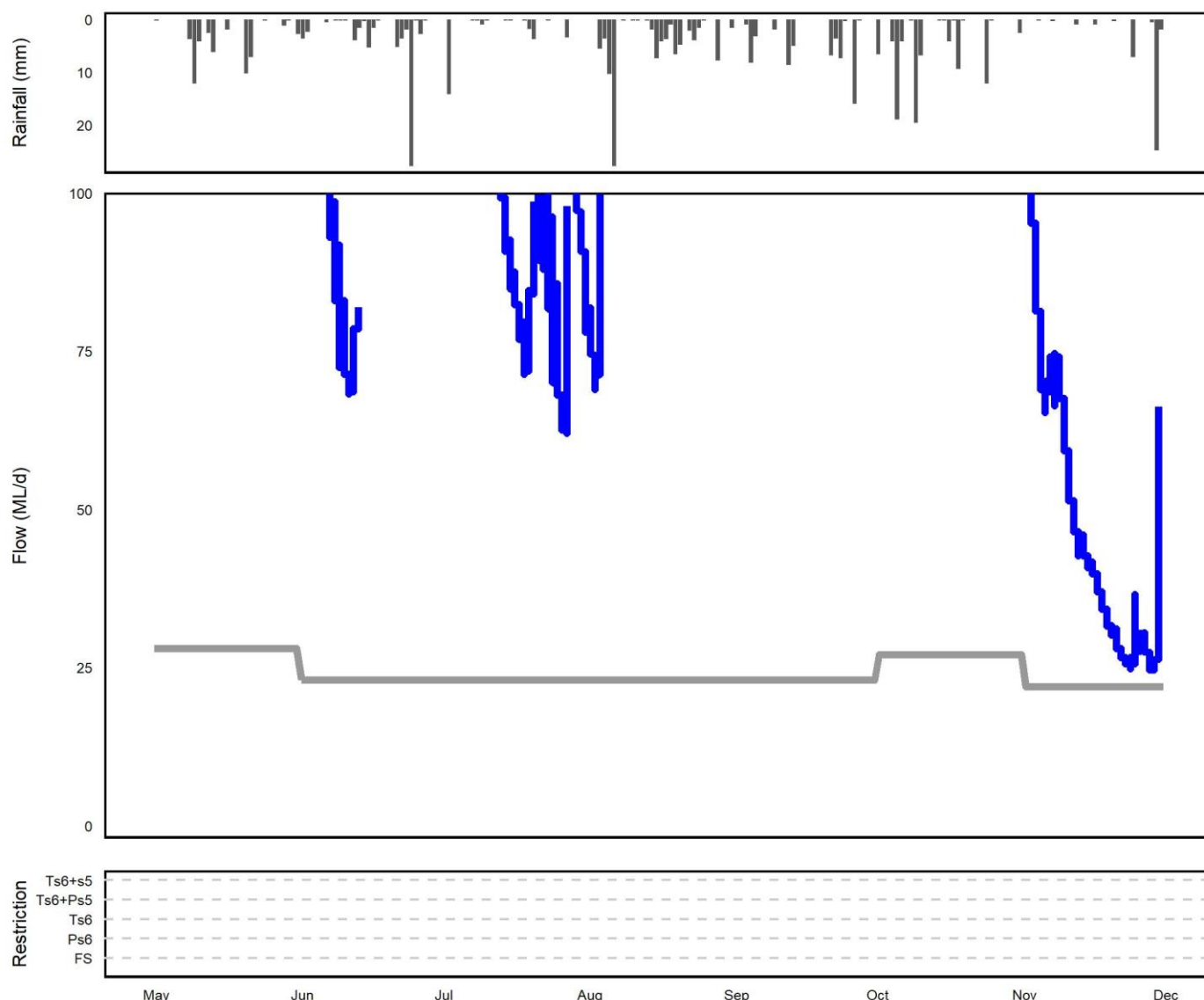
Table 4 Restriction levels and total days at each level for the summer period (Dec 2020 – April 2021).

Restriction Type	Days at restriction level in 2019/20	Days at restriction level in 2020/21
Flow Sharing	0	0
Partial Surety 6	0	0
Total Surety 6	0	0
Total Surety 6 + Partial Surety 5	0	0
Total Surety 6 + Total Surety 5	97	0

For further information contact your local Regional Water Management Officer at the Department of Primary Industries, Parks, Water and Environment:  
 Phone: 1300 368 550  
 Email: [Water.Operations@dpipwe.tas.gov.au](mailto:Water.Operations@dpipwe.tas.gov.au)  
[dpipwe.tas.gov.au/water](http://dpipwe.tas.gov.au/water)

August 2021

### Rainfall, low flows and restriction periods during winter 2020/2021



## NILE AT DEDDINGTON

**Figure 8.** Summary of rainfall, low flows and restrictions in the Nile catchment during winter (May-November) 2020.

Top plot: daily rainfall (Deddington (Marathon) BoM site).

Middle plot: instantaneous flow (<100 ML) Nile at Deddington station (compliance flow site).

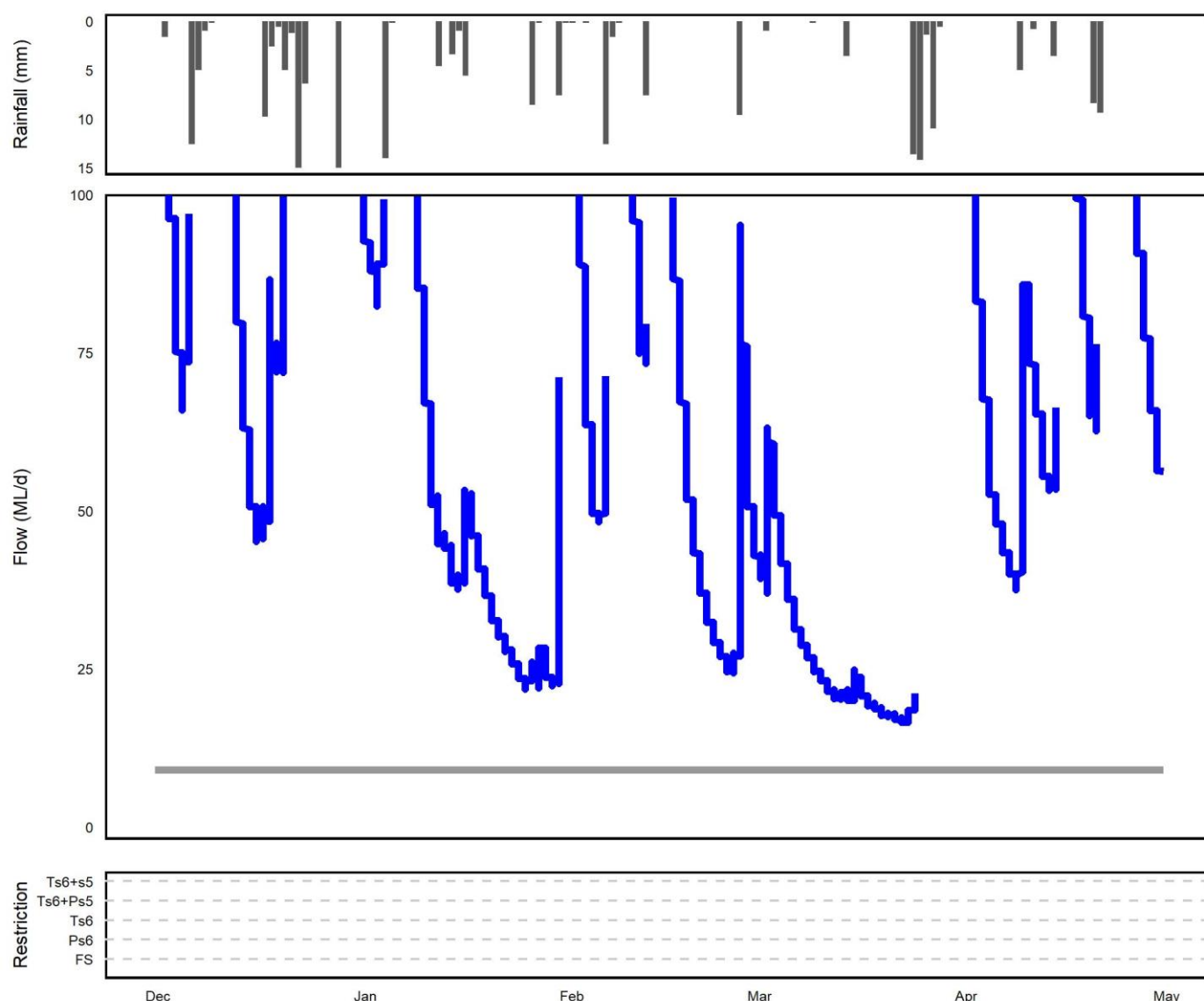
Bottom plot: days when restrictions were in place.

**NOTE: Refer to the last page for a 'legend' and description on how to interpret these plots**

Table 5 Restriction levels and total days at each level for the winter period (May - November 2019).

Restriction Type	Days at restriction level in 2019/20	Days at restriction level in 2020/21
Flow Sharing	0	0
Partial Surety 6	0	0
Total Surety 6	0	0
Total Surety 6 + Partial Surety 5	0	0
Total Surety 6 + Total Surety 5	0	0

## Rainfall, low flows and restriction periods during summer 2020/2021



## NILE AT DEDDINGTON

**Figure 9.** Summary of rainfall, low flows and restrictions in the Nile catchment during summer 2019/20 (Dec-April).

Top plot: daily rainfall (Deddington (Marathon) BoM site).

Middle plot: instantaneous flow (<100 ML) Nile at Deddington station (compliance flow site).

Bottom plot: days when restrictions were in place.

**NOTE: Refer to the last page for a 'legend' and description on how to interpret these plots**

Table 6 Restriction levels and total days at each level for the summer period (Dec 2019 – April 2020).

Restriction Type	Days at restriction level in 2019/20	Days at restriction level in 2020/21
Flow Sharing	0	0
Partial Surety 6	0	0
Total Surety 6	0	0
Total Surety 6 + Partial Surety 5	0	0
Total Surety 6 + Total Surety 5	0	0

For further information contact your local Regional Water Management Officer at the Department of Primary Industries, Parks, Water and Environment:

Phone: 1300 368 550

Email: [Water.Operations@dpipwe.tas.gov.au](mailto:Water.Operations@dpipwe.tas.gov.au)

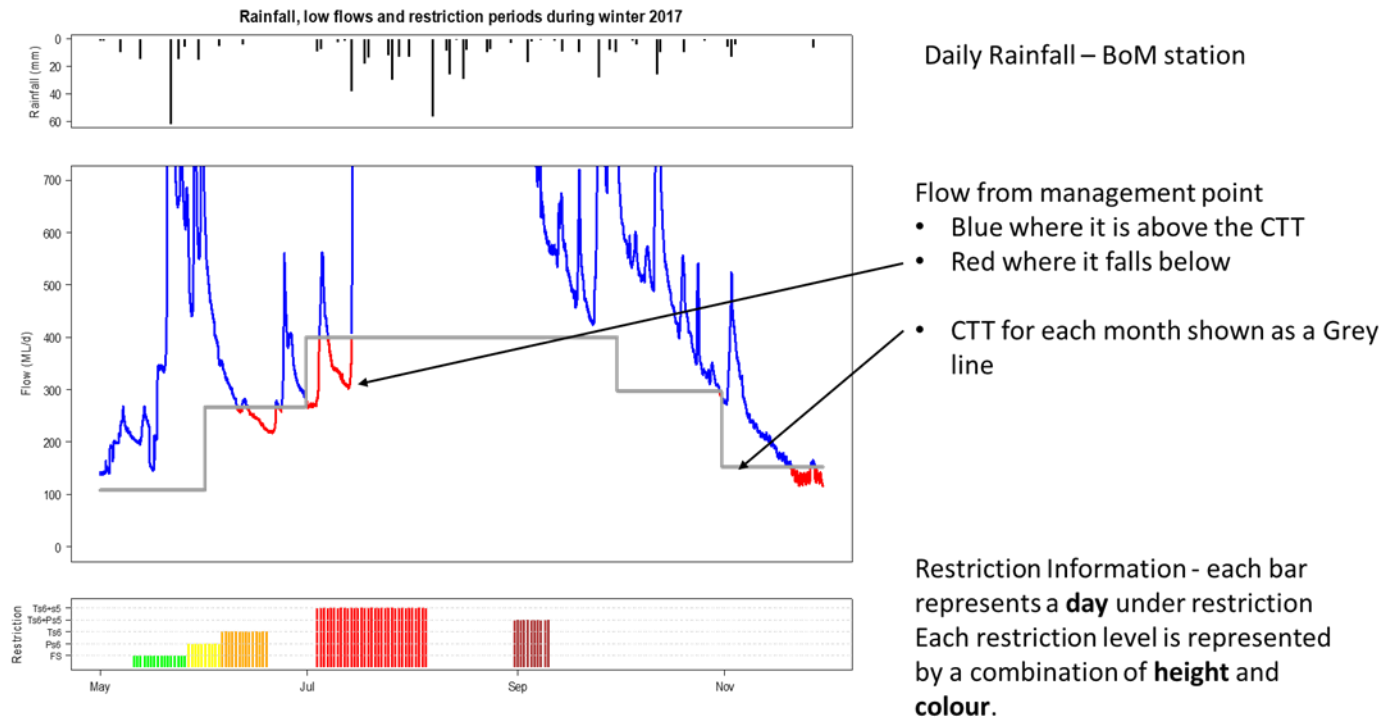
[dpipwe.tas.gov.au/water](http://dpipwe.tas.gov.au/water)

August 2021

## EXAMPLE ONLY

# Rainfall, flow and restriction plot legend

**NOTE: This is a hypothetical example to assist in interpreting the plots in the main body of this document.**



### Flow Restriction definitions:

FS = flow sharing (only some catchments), shown in GREEN

Ps6 = partial surety 6 ban, shown in YELLOW

Ts6 = total surety 6 ban, shown in ORANGE

Ts6+Ps5 = total surety 6 and partial surety 5 ban, shown in BROWN

Ts6+s5 = total surety 5 and 6 ban, shown in RED

## EXAMPLE ONLY

For further information contact your local Regional Water Management Officer at the Department of Primary Industries, Parks, Water and Environment:

Phone: 1300 368 550

Email: [Water.Operations@dpipwe.tas.gov.au](mailto:Water.Operations@dpipwe.tas.gov.au)

[dpipwe.tas.gov.au/water](http://dpipwe.tas.gov.au/water)

August 2021