



# LANDSCAPE

RECOVERY FOUNDATION



Breeding season report 2

Swift parrot monitoring

December 2023

## Monitoring program – stage 2

The second stage of the annual swift parrot breeding season monitoring program (early November onwards) is used to assess the settlement patterns of the swift parrot population (as identified in stage 1), record the spatial distribution of nesting swift parrots across the breeding range, and assess breeding success. This report provides preliminary findings from this second stage of monitoring to assist decision-making for land managers and regulators.

### Regional patterns of swift parrot observations in nesting habitat

At the regional scale (as identified in stage 1) the most abundant flowering of food tree species observed in the breeding range has been in the south of Tasmania, including the Channel area, Bruny Island, Maria Island, and from Huonville to Southport Lagoon. Swift parrot nests and/or nesting behaviour has been recorded on South Bruny Island, North Bruny Island, Southport Lagoon Conservation Area, Roaring Beach, and the Southport, Hopetoun, Kermandie, Franklin, Barnback and Denison State Forest Blocks. In addition, swift parrot parrots have been observed in several more locations in the Eastern Tiers.

The greatest observed abundances of swift parrots in nesting habitat within these regions have been on Bruny Island and in the Kermandie, Hopetoun, Southport and Esperance State Forest Blocks. In the Eastern Tiers the greatest observed abundances have been in the Snow Hill and Tooms Lake State Forest Blocks. Limited resources did not allow nesting surveys to be undertaken on Maria Island; however swift parrot parrot nesting is likely occurring.

Successful nesting has been recorded near Dover and Southport and on Bruny Island.

Observations of swift parrots will be submitted to the Natural Values Atlas (NVA). New locations of swift parrots will be reported during the breeding season.

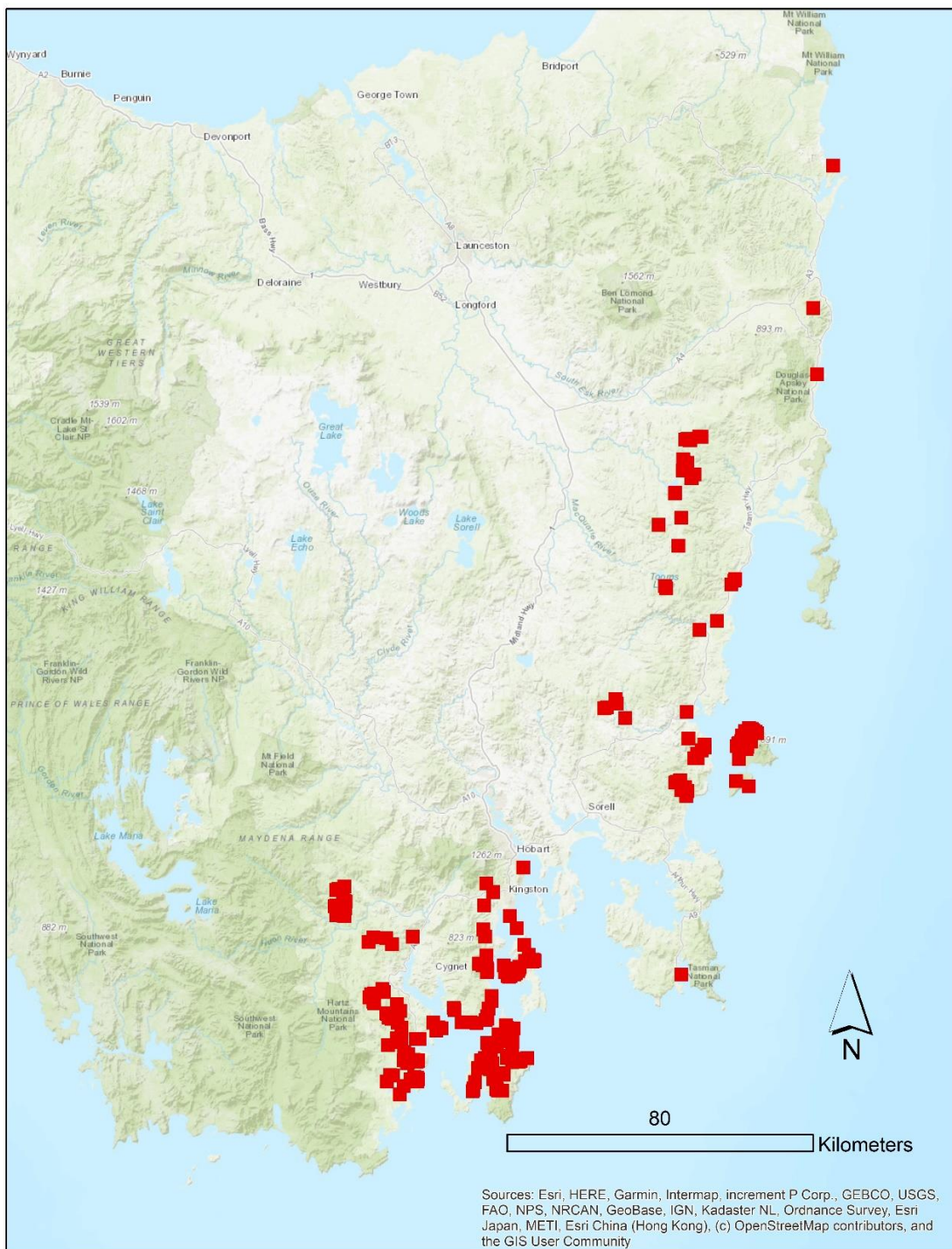


Figure 1. Preliminary findings of swift parrot surveys; swift parrot observations (red squares).