



LANDSCAPE

RECOVERY FOUNDATION



Breeding season report 1

Swift parrot monitoring

30 November 2023

Monitoring program – stage 1

The first stage of the annual swift parrot breeding season population monitoring program is used to determine the species' spatial distribution across the breeding range, predict flowering conditions during the entire breeding season, and the settlement patterns of the swift parrot population. This report provides preliminary findings from this first stage of monitoring to assist decision-making for land managers and regulators.

Regional flowering patterns, swift parrot observations and nesting behaviour

At the landscape/regional scale the most abundant flowering of food tree species observed in the breeding range has been in the south of Tasmania, primarily in *E. globulus* in the southeast. This includes the Channel area, Bruny Island, Maria Island, and from Huonville to Southport Lagoon. Flowering has been patchy within these regions, resulting in localised areas of abundant flowering as well as dispersed 'low density' flowering over larger spatial scales. Flowering is also extending in to higher altitudes. The spatial distribution of swift parrots remains similar to the preliminary findings presented in the *Early Regional Flowering Report*.

Nesting behaviour and active nests have been observed on South Bruny Island, Southport Lagoon Conservation Area, Roaring Beach, and the Southport, Hopetoun, Kermandie, Franklin, Barnback and Denison State Forest Blocks. Areas of relatively higher densities of swift parrots at finer spatial scales include Tyler's Hill (Southport Forest Block), Burns Hill (Hopetoun Forest Block), Kermandie Divide (Kermandie Forest Block), South Bruny Island, Maria Island and the Channel area from Woodbridge to Cygnet. Fledglings from early nests have been recorded at Verona Sands, Lady Bay and Burns Hill.

Nesting behaviour has also been observed areas where swift parrots are present at lower densities including Blue Gum Spur and Mt Walter in Wielangta, Buckland/Woodsdale, and the Snow Hill and Tooms Lake State Forest Blocks in the Eastern Tiers.

Observations of swift parrots have been submitted to the Natural Values Atlas (NVA).

New locations of swift parrots will continue to be reported during the breeding season. This will include nesting site observation data from on-going survey effort.

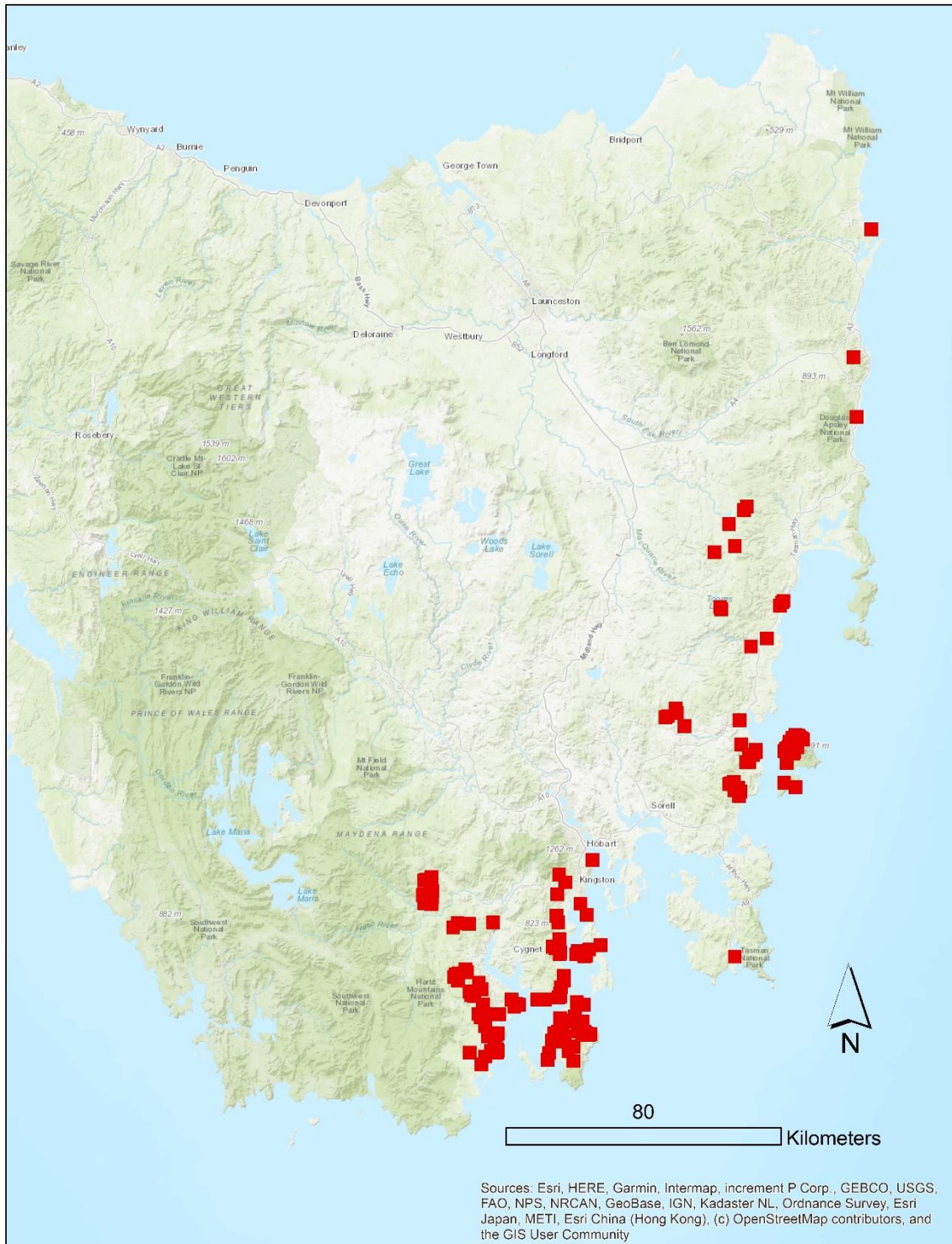


Figure 1. Preliminary findings of swift parrot population monitoring; swift parrot observations (red squares).