

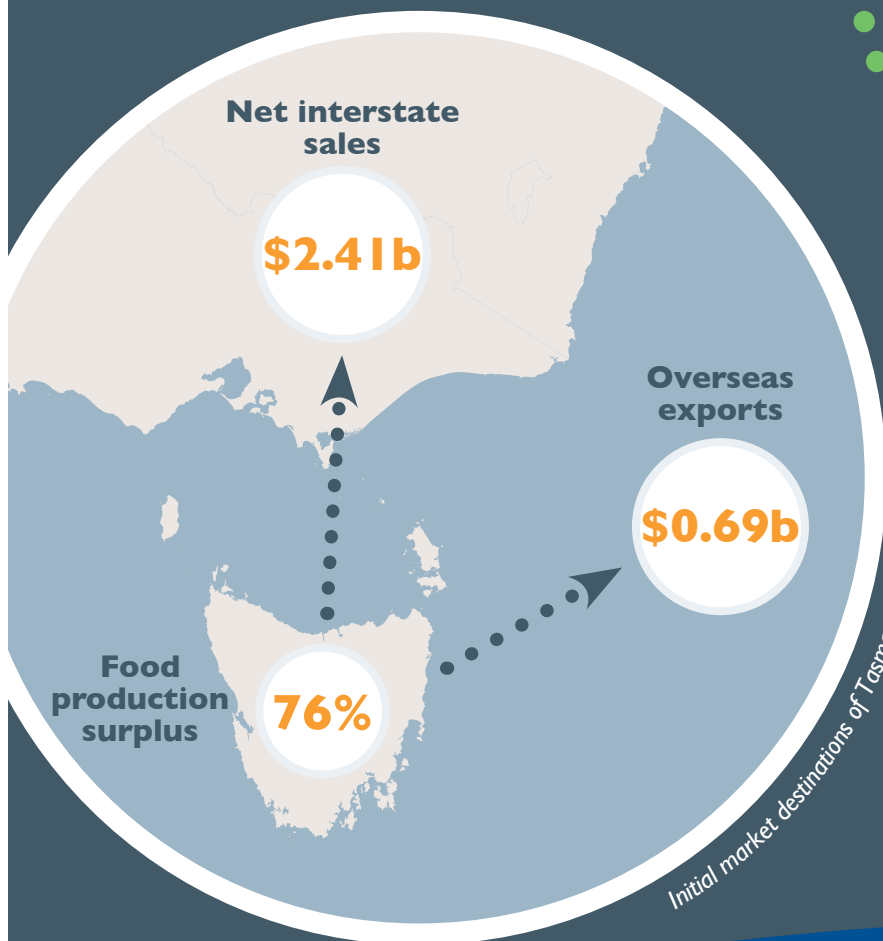
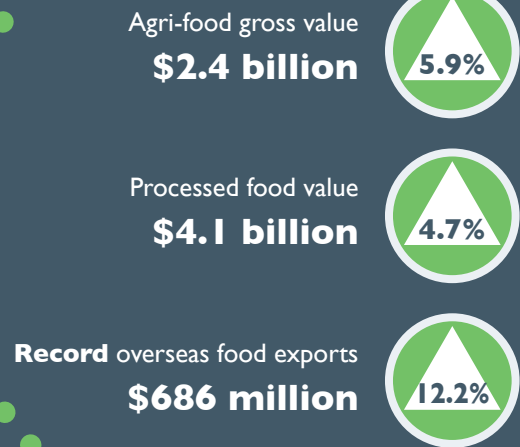
Tasmanian Agri-Food ScoreCard

SNAPSHOT 2015-16

Agriculture, seafood and food value adding are major contributors to the Tasmanian economy.

In a year of challenging seasonal conditions and weakness in some important commodity markets, the gross value of Tasmania's agri-food production grew by 5.9% in 2015-16 with salmonids, beef and cherries posting impressive growth in gross value and exports. Access to irrigation, diversity of production, and the State's disease-free status and brand were factors that boosted the resilience and competitiveness of the sector.

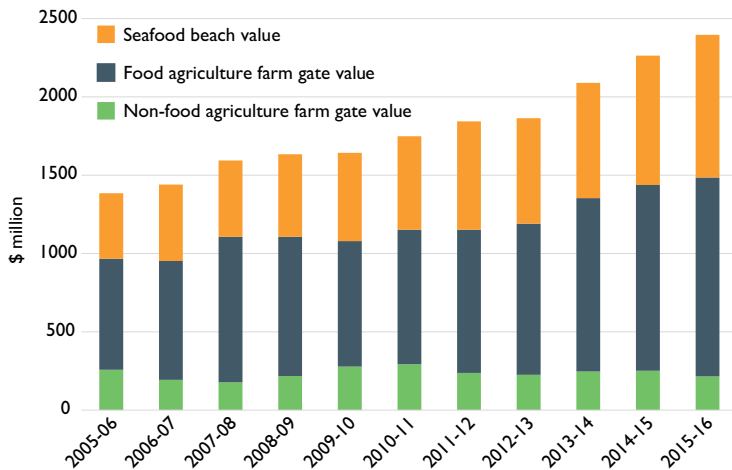
The **Tasmanian Agri-Food ScoreCard** measures and reports on the value and market destinations of the State's agriculture, food and beverage production.



In 2015-16

- The total gross value of agriculture was **\$1.48 billion**, of which food agriculture comprised **\$1.27 billion**.
- The gross value of seafood production was **\$911 million**.
- The gross value of agricultural production grew by **3.3%** and seafood production grew by **10.4%**.
- Net sales of Tasmanian food to overseas and interstate markets totalled **\$3.09 billion**.
- Gross food revenue to Tasmania was **\$6.44 billion** and net food revenue was **\$5.68 billion**.

Growth in value of agriculture & seafood production



2015-16 was an exceptionally dry year

except in the last two months when heavy rain resulted in widespread flooding. Global market conditions for some commodities such as beef, salmonids and wool were favourable whilst for others, such as dairy and poppies, they were more challenging.

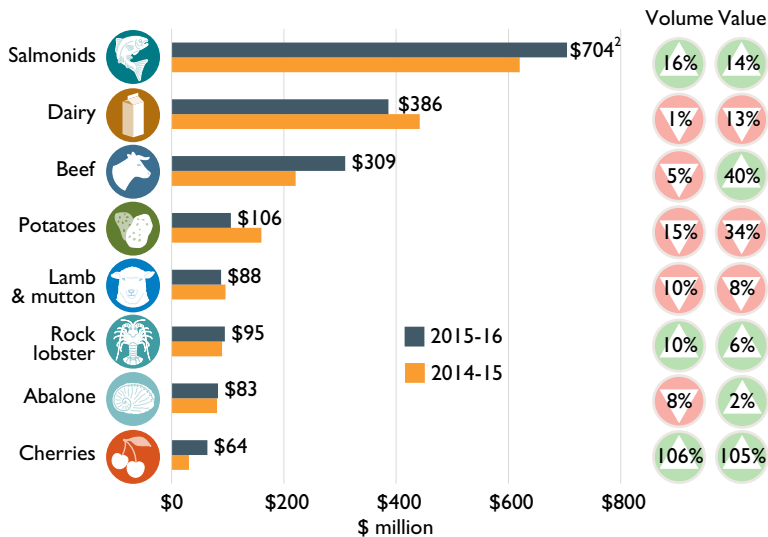
In spite of challenging conditions that constrained production volumes overall, the gross value of agriculture grew by 3.3% and, after accounting for inflation, matched the 10-year real growth rate.¹ Growth in food agriculture of 6.9% more than offset the 14.0% contraction in the value of non-food agriculture.

Seafood value grew by 10.4%, mainly driven by continued growth in the volume of salmonids.²

A reduced farm-gate milk price and a slight fall in milk volumes resulted in the gross value of dairy falling by 12.7%. Seasonal conditions reduced potato yields and cut gross value by over a third.

Although beef production volumes fell slightly, strong prices increased beef gross value. Irrigation allowed most fruit producers to capitalise on the dry conditions with cherries more than doubling in value.

Key contributors to gross food value



Primary production 2015-16	Gross value	Nominal growth in 2015-16	10 year average real growth rate [y-o-y]
Food agriculture	\$1.27 billion	6.9%	3.4%
Non-food agriculture ³	\$0.22 billion	-14.0%	-4.1%
Total agriculture	\$1.48 billion	3.3%	1.9%
Seafood	\$0.91 billion	10.4%	5.5%
Agri-food (total agriculture + seafood)	\$2.40 billion	5.9%	3.0%

¹ The RBA reported an average annual inflation rate of 1.4% for 2015-16.

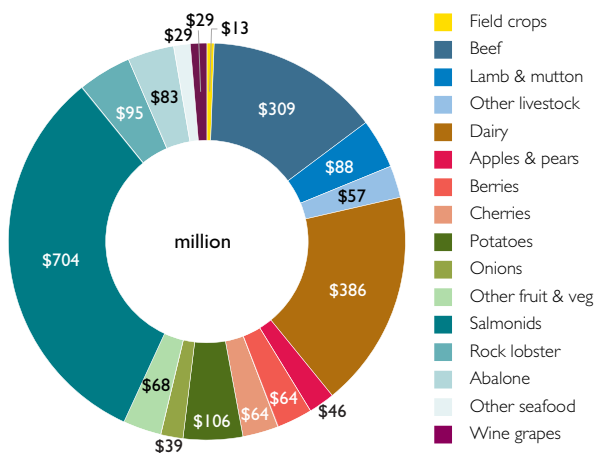
² In 2016-17, the value of salmonids grew by a further 3.7% to \$730 million. Salmonids include Atlantic salmon and ocean trout.

³ Commodities not sold as or manufactured into food for human consumption, such as wool, poppies, pyrethrum, and fodder crops.

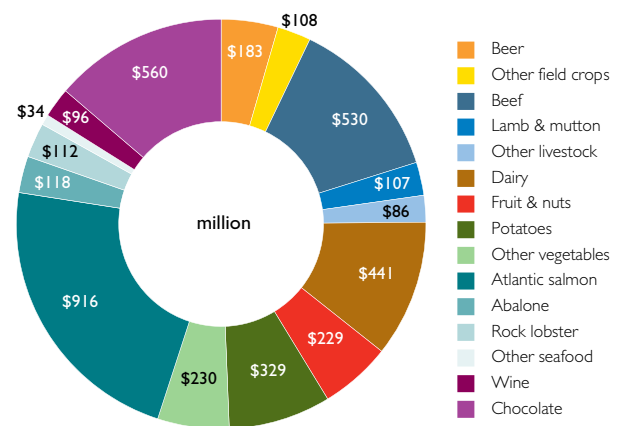
Key Food Facts 2015-16

Value of food at farm gate and beach	\$2.18 billion	▲ 8.0%
Value of food after processing and packing	\$4.08 billion	▲ 4.7%
Gross food revenue (domestic, interstate and overseas sales)	\$6.44 billion	▲ 7.4%
Net food revenue (gross food revenue less imports)	\$5.68 billion	▲ 4.9%
Overseas food exports	\$0.69 billion	▲ 12.2%
Net interstate food exports	\$2.41 billion	▼ 0.4%
Retail and food service food and beverage sales in Tasmania	\$3.25 billion	▲ 12.2%
Proportion of food produced in Tasmania sold interstate and overseas	76.0%	▼ 2.0%

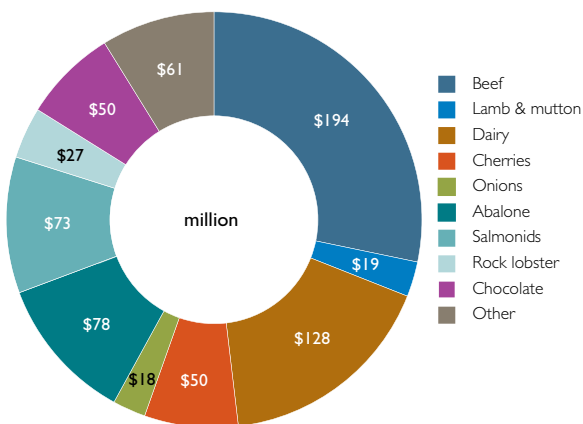
Gross food value at farm gate or beach - \$2.18 billion



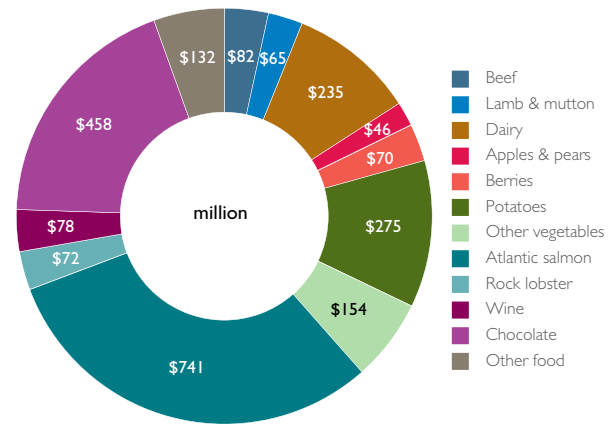
Processed food value - \$4.08 billion



International food exports - \$686 million



Interstate net food sales - \$2.41 billion



The value of processed food grew to \$4.08 billion. Gains in the value of processed beef and salmonids were offset by falls in the volume of beer produced and the volume and value of dairy products.

Strong export demand for beef, excellent seasonal conditions for cherry production, and reduced Norwegian and Chilean salmonid production contributed to a 12.2% growth in the value of overseas food exports to a record \$686 million. The decline in interstate food sales to \$2.41 billion was largely due to diversion of products into more lucrative international export markets.

Overseas and interstate food imports were worth \$23 million and \$736 million respectively.

ScoreCard Summary 2015-16 (\$ million)

	Field Crops	Livestock	Dairy	Fruit	Vegetables	Seafood	Wine	Chocolate	Total*
Food - farm gate/beach value	12.8	454.3	386.1	169.7	217.1	911.4	29.2		2,180.6
Total farm gate/beach value	146.1	572.5	386.1	169.7	217.1	911.4	29.2		2,396.3
Food - processed & packed value	291.0	723.0	440.9	229.3	559.8	1,179.1	95.9	559.7	4,078.7
Overseas Trade									
Commodity Exports	0.5	0.0	0.0	0.0	0.0	0.0	0.0		0.5
Commodity Imports	0.0	0.0	0.0	0.0	0.0	0.0	0.0	0.5	4.8
Food Exports	13.5	215.3	127.8	52.8	24.7	188.7	3.7	50.1	686.3
Food Imports	0.3	0.0	0.0	0.1	4.2	12.9	0.4		18.2
Net Interstate Trade									
Net Commodity Exports	0.8	85.4	0.0	0.0	0.0	0.0	4.4		90.5
Net Commodity Imports	9.2	17.7	0.0	0.0	0.0	0.0	0.0	68.7	95.6
Net Food Exports	39.2	147.2	235.4	144.3	428.6	877.7	78.2	457.5	2,408.1
Net Food Imports	64.1	125.5	0.0	61.8	30.5	97.2	79.7		640.0
Tasmanian Food Sales									
Retail Sales	364.4	769.8	233.3	189.0	348.4	137.6	133.4	50.2	2,481.5
Food Service Sales	217.7	125.5	4.7	31.6	83.6	164.3	141.3	8.4	770.2
Net Food Revenue	571.2	1,200.0	601.3	355.7	850.5	1,258.1	280.9	496.6	5,678.5
Gross Food Revenue	644.8	1,343.2	601.3	417.6	885.2	1,368.2	361.0	566.1	6,437.1

* Totals may include items that do not fall into one of the 8 categories listed (eg frozen meals, soft drinks, cooking ingredients)



GROW



MAKE



PROTECT

CONTACT:

Mary Bennett, Agricultural Economist

AgriGrowth Tasmania

Department of Primary Industries, Parks, Water and Environment

GPO Box 44 Hobart TAS 7001

P: 03 6165 3163

E: Mary.Bennett@dpiwve.tas.gov.au

W: www.dpiwve.tas.gov.au