

# TOMAHAWK RIVER CATCHMENT ANNUAL REPORT 2019/20

**The Tomahawk River catchment** is located in the north-east of Tasmania and flows north approximately 29 km from Mount Horror to Ringarooma Bay. The catchment covers a total area of 170 km<sup>2</sup>.

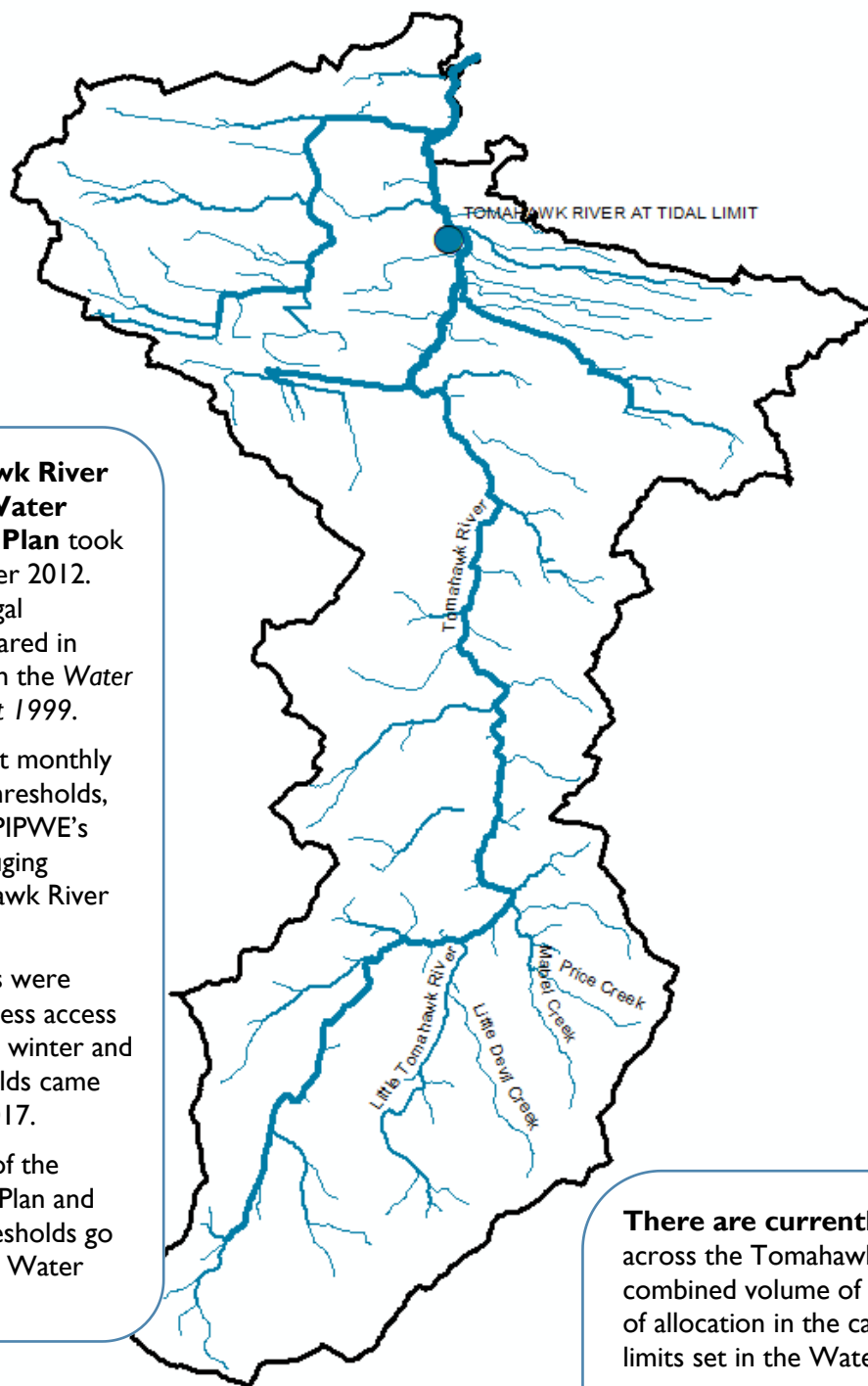
The river system is unregulated with a largely natural flow regime that shows a strong seasonal flow pattern (wetter in winter and drier in summer). The average annual water yield is 23,794 ML/year.

**The Tomahawk River Catchment Water Management Plan** took effect in October 2012. The Plan is a legal document prepared in accordance with the *Water Management Act 1999*.

The Plan set out monthly cease to take thresholds, measured at DPIPW's stream flow gauging station: Tomahawk River at Tidal Limit.

CTT thresholds were reviewed to assess access to water during winter and revised thresholds came into effect in 2017.

For full details of the current Water Plan and the revised thresholds go to the DPIPW Water website.



**There are currently 13 water allocations** across the Tomahawk catchment with a combined volume of 5133 ML/year. The volume of allocation in the catchment has reached the limits set in the Water Management Plan.

## CONSUMPTIVE WATER ALLOCATION

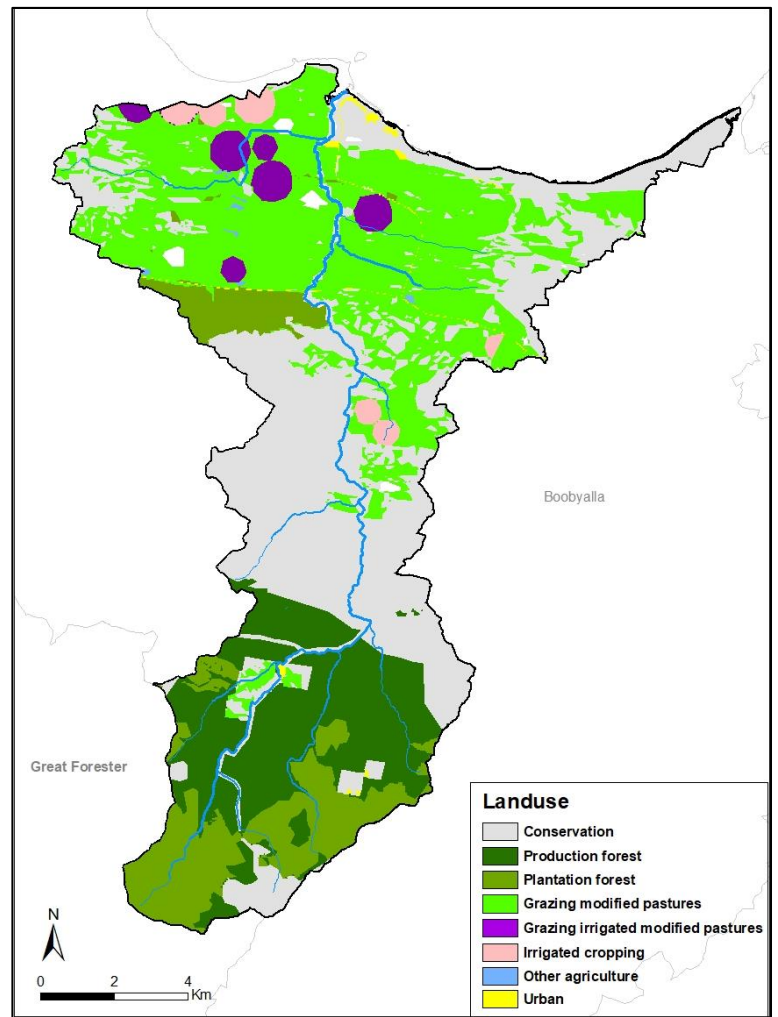
Surety Level	Summer Vol.(ML)	Winter Vol. (ML)	Overall Vol. (ML)
S 5	134	3564	3698
S 6	0	1435	1435
Total	134	4999	5133

## CATCHMENT LAND USE

Roughly 28% of the catchment is under production native forests and plantation forestry. A further 36% is used for agricultural purposes with the remaining area supporting a diversity of land uses including urban areas and conservation land. The town of Tomahawk sits at the outlet of the catchment.

## RIVER HEALTH

DPIPWE has recently established a long-term river health monitoring site on the lower Tomahawk River immediately upstream of the river's estuary. Monitoring at the site in recent years (2015-2018) indicates that the lower reaches of the river are in moderate to good condition.



## HYDROLOGY SUMMARY

The following pages show plots of long term streamflow (full period of available record), short term flow and rainfall (last 5 water years), and last years flow, rainfall and restriction data, split into winter (May 2019 – November 2019) and summer (December 2019 – April 2020) seasons.



For further information contact your local Regional Water Management Officer at the Department of Primary Industries, Parks, Water and Environment:  
Phone: 1300 368 550  
Email: [Water.Operations@dpipwe.tas.gov.au](mailto:Water.Operations@dpipwe.tas.gov.au)  
[dpipwe.tas.gov.au/water](http://dpipwe.tas.gov.au/water)

June 2020

Full flow record, 1968 - 2020

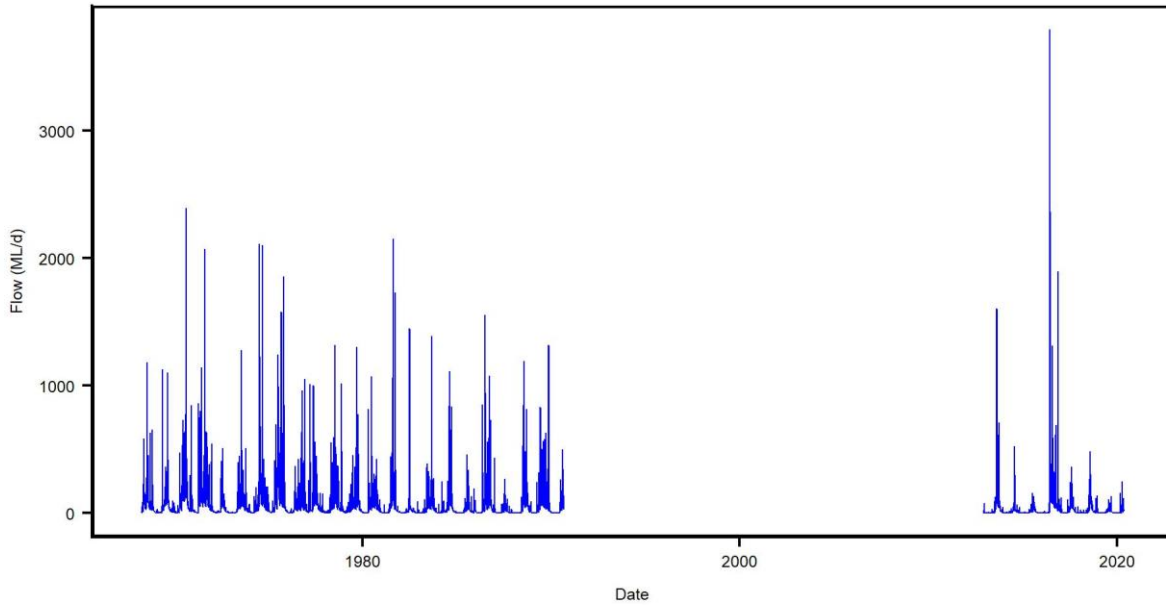


Figure 1. Mean daily flow at the Tomahawk River at Tidal Limit streamflow gauging station, whole of record.

Full record of yields in water years 1968 - 2019

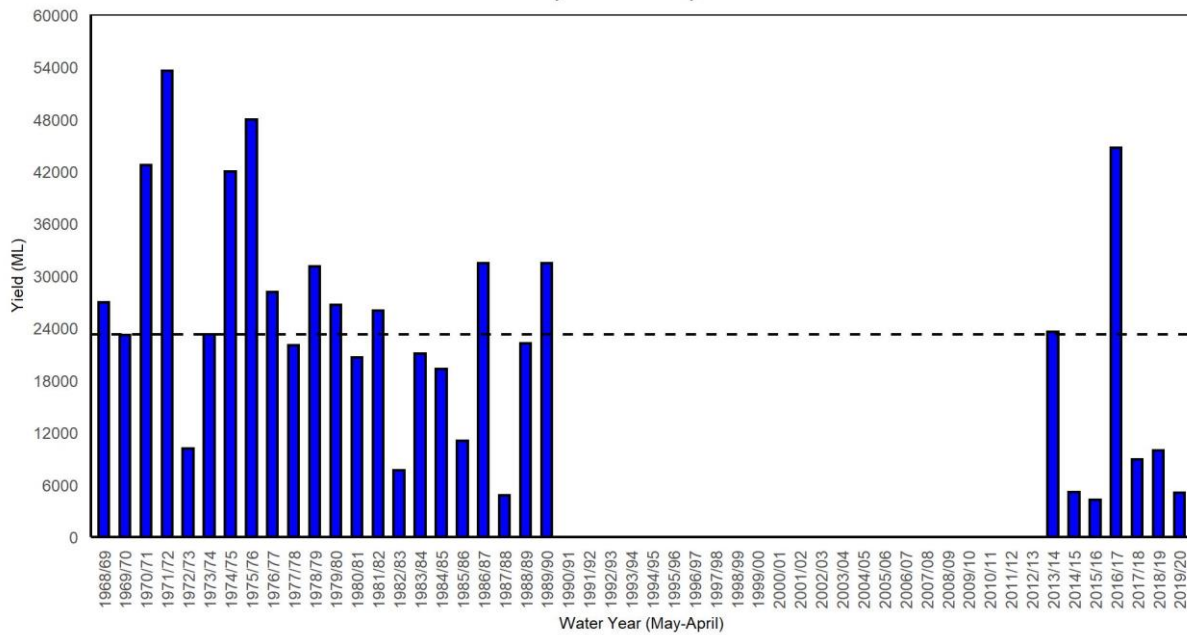
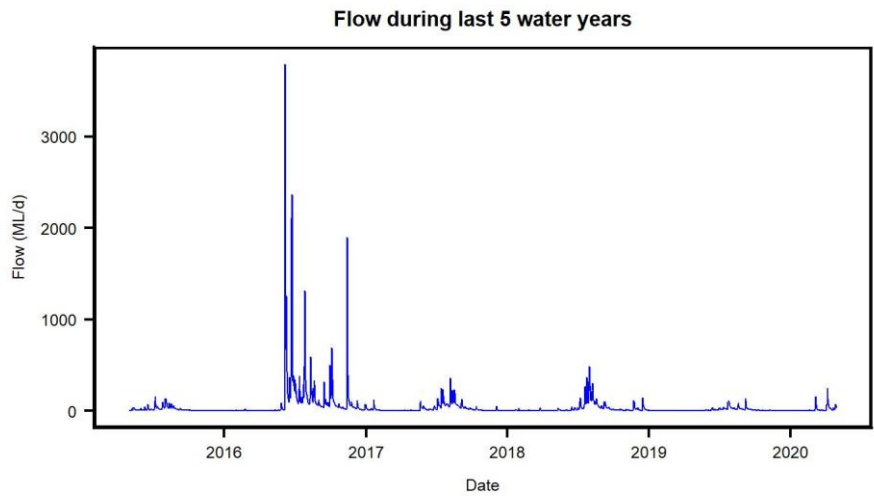
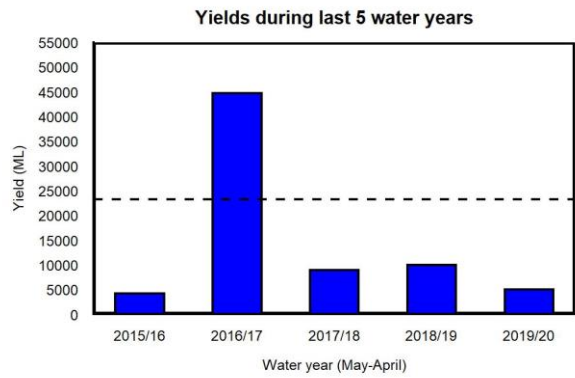


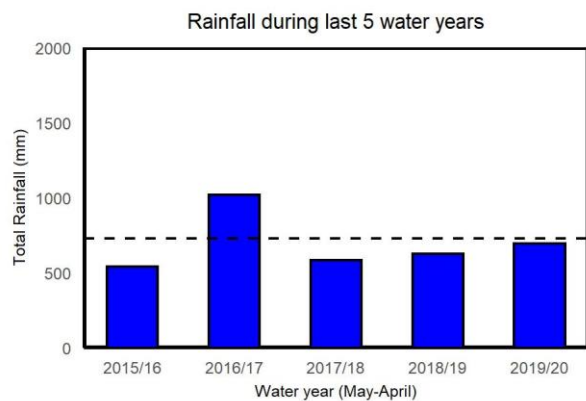
Figure 2. Yields in the Tomahawk River at the Tidal Limit streamflow gauging station. Water years with <95% of the daily flow record available are excluded. The long-term mean yield is shown as the dashed horizontal black line (23 255 ML).



**Figure 3.** Mean daily flow in the Tomahawk River at the Tidal Limit streamflow gauging station for the last five years.

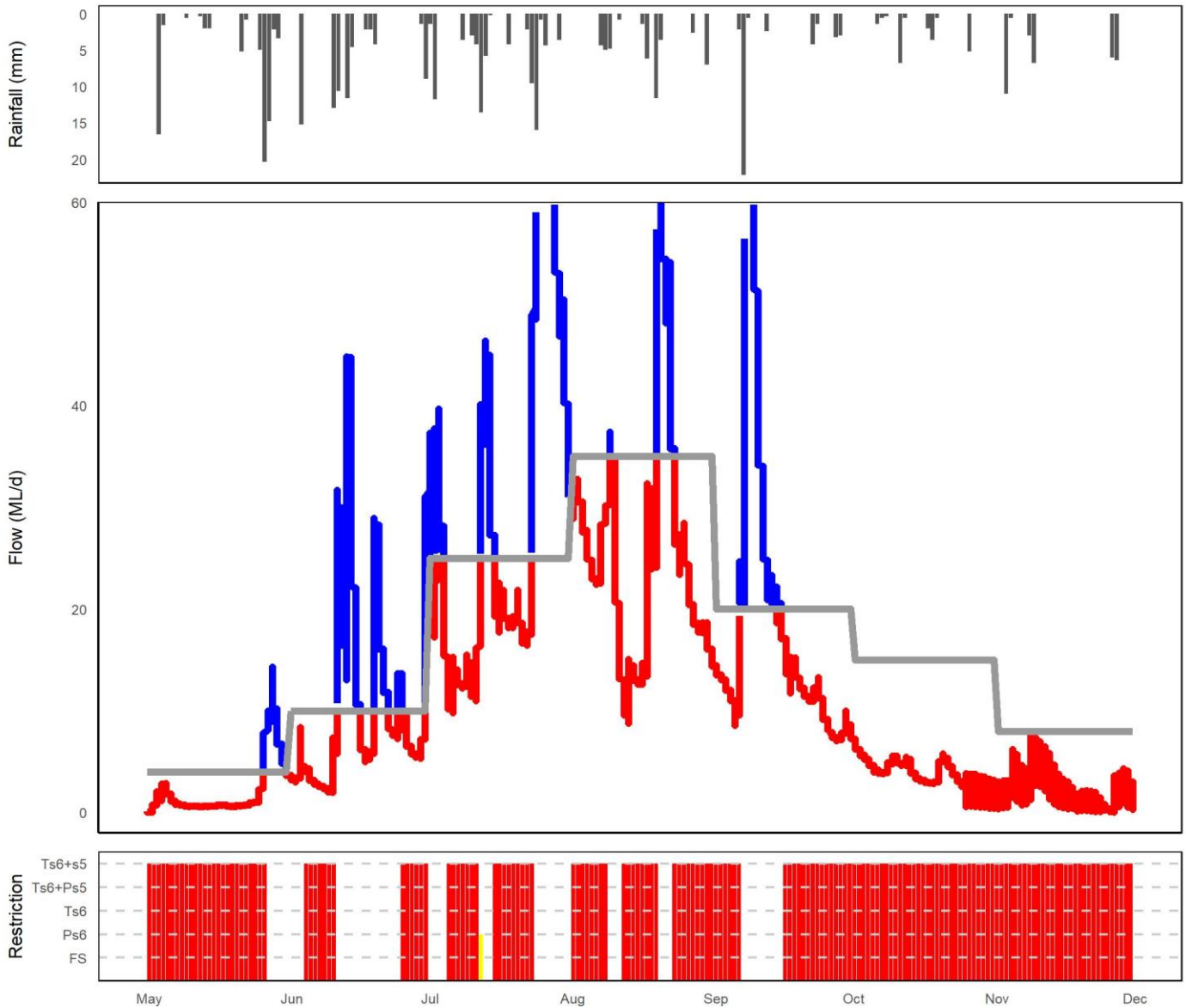


**Figure 4.** Yields in the Tomahawk River at the Tidal Limit streamflow gauging station for the last five years. The long-term mean yield is shown as the dashed horizontal black line (23 255 ML).



**Figure 5.** Total rainfall at the Tomahawk (Carisbrooke) BoM weather station during the last five water years. The long-term (1965-2019) mean total rainfall (730 mm) is shown as the black horizontal dashed line.

Rainfall, low flows and restriction periods during winter 2019/2020



**Figure 6.** Summary of rainfall, low flows and restrictions in the Tomahawk catchment during winter (May-November) 2019.

Top plot: daily rainfall (Tomahawk (Carisbrooke) BoM site).

Middle plot: instantaneous flow (<60 ML) Tomahawk River at the Tidal Limit station (compliance flow site).

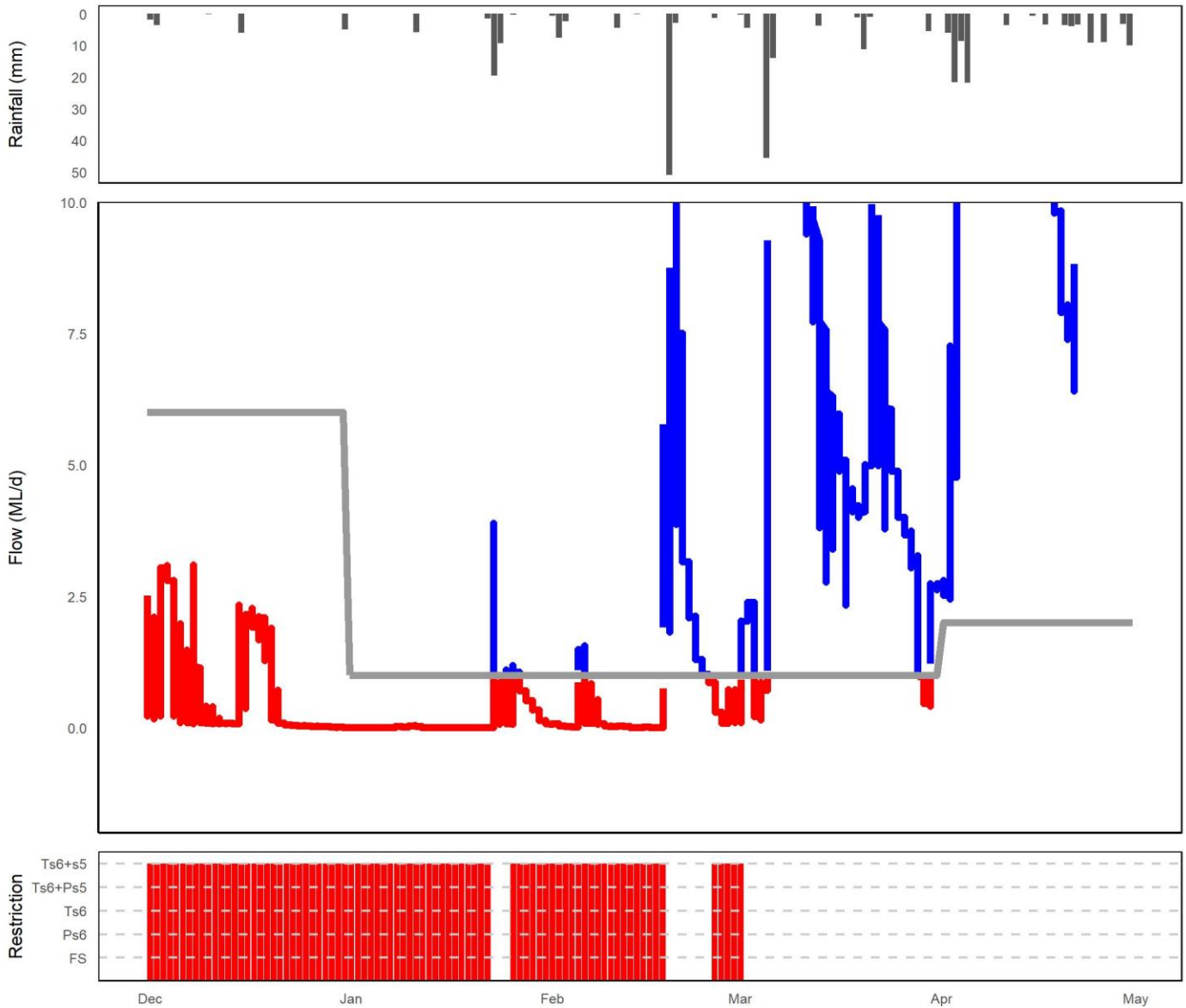
Bottom plot: days when restrictions were in place.

**NOTE: Refer to the last page for a 'legend' and description on how to interpret these plots**

**Table 1.** Restriction levels and total days at each level for the winter period (214 days: May - November 2019).

Restriction Type	Days at restriction level in 2018/19	Days at restriction level in 2019/20
Total Surety 6 + Total Surety 5	<b>89</b>	<b>162</b>

### Rainfall, low flows and restriction periods during summer 2019/2020



**Figure 7.** Summary of rainfall, low flows and restrictions in the Tomahawk catchment during summer 2019/20 (Dec-April).

Top plot: daily rainfall (Tomahawk (Carisbrooke) BoM site).

Middle plot: instantaneous flow (<10 ML) Tomahawk River at the Tidal Limit station (compliance flow site).

Bottom plot: days when restrictions were in place.

**NOTE: Refer to the last page for a 'legend' and description on how to interpret these plots**

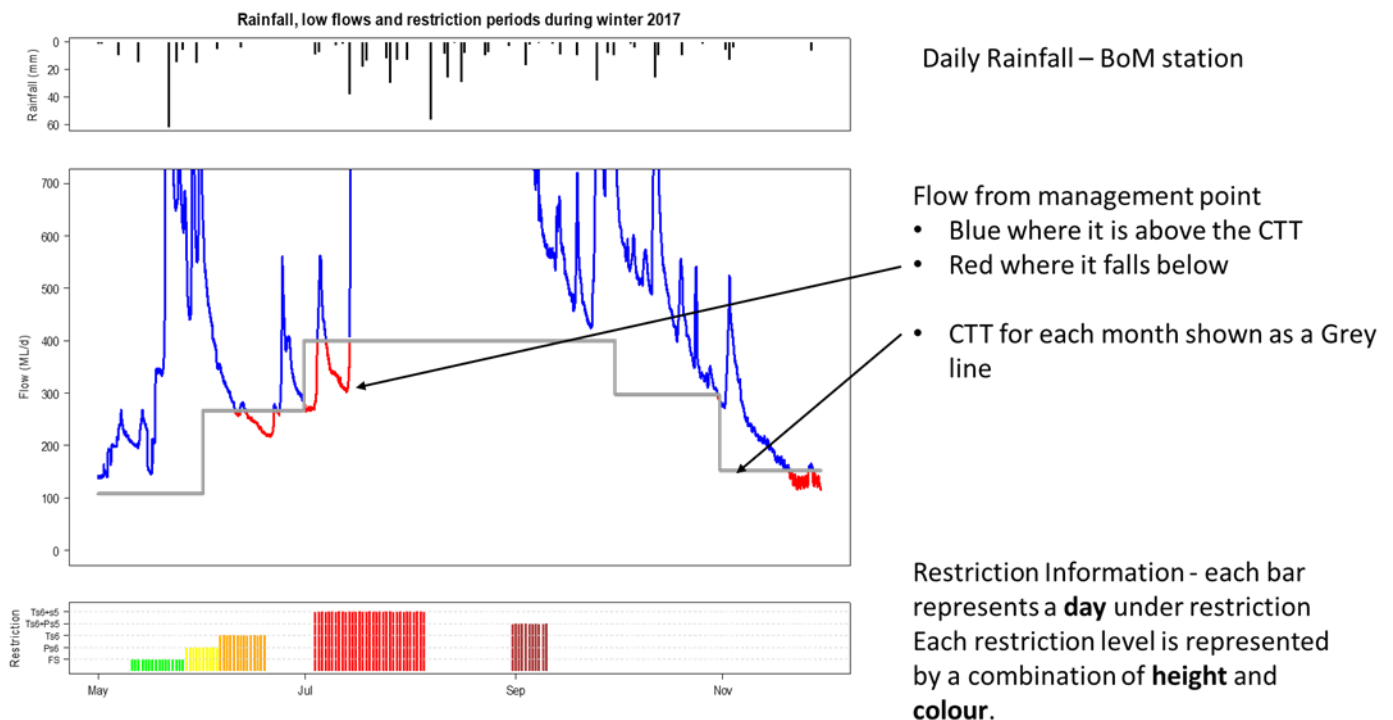
**Table 2.** Restriction levels and total days at each level for the summer period (151 days: Dec 2019 – April 2020).

Restriction Type	Days at restriction level in 2018/19	Days at restriction level in 2019/20
Total Surety 6 + Total Surety 5	<b>117</b>	<b>82</b>

## EXAMPLE ONLY

### Rainfall, flow and restriction plot legend

**NOTE:** This is a hypothetical example to assist in interpreting the plots in the main body of this document.



#### Flow Restriction definitions:

FS = flow sharing (only some catchments), shown in GREEN

Ps6 = partial surety 6 ban, shown in YELLOW

Ts6 = total surety 6 ban, shown in ORANGE

Ts6+Ps5 = total surety 6 and partial surety 5 ban, shown in BROWN

Ts6+s5 = total surety 5 and 6 ban, shown in RED

## EXAMPLE ONLY

For further information contact your local Regional Water Management Officer at the Department of Primary Industries, Parks, Water and Environment:

Phone: 1300 368 550

Email: [Water.Operations@dPIPWE.tas.gov.au](mailto:Water.Operations@dPIPWE.tas.gov.au)

[dPIPWE.tas.gov.au/water](http://dPIPWE.tas.gov.au/water)

June 2020