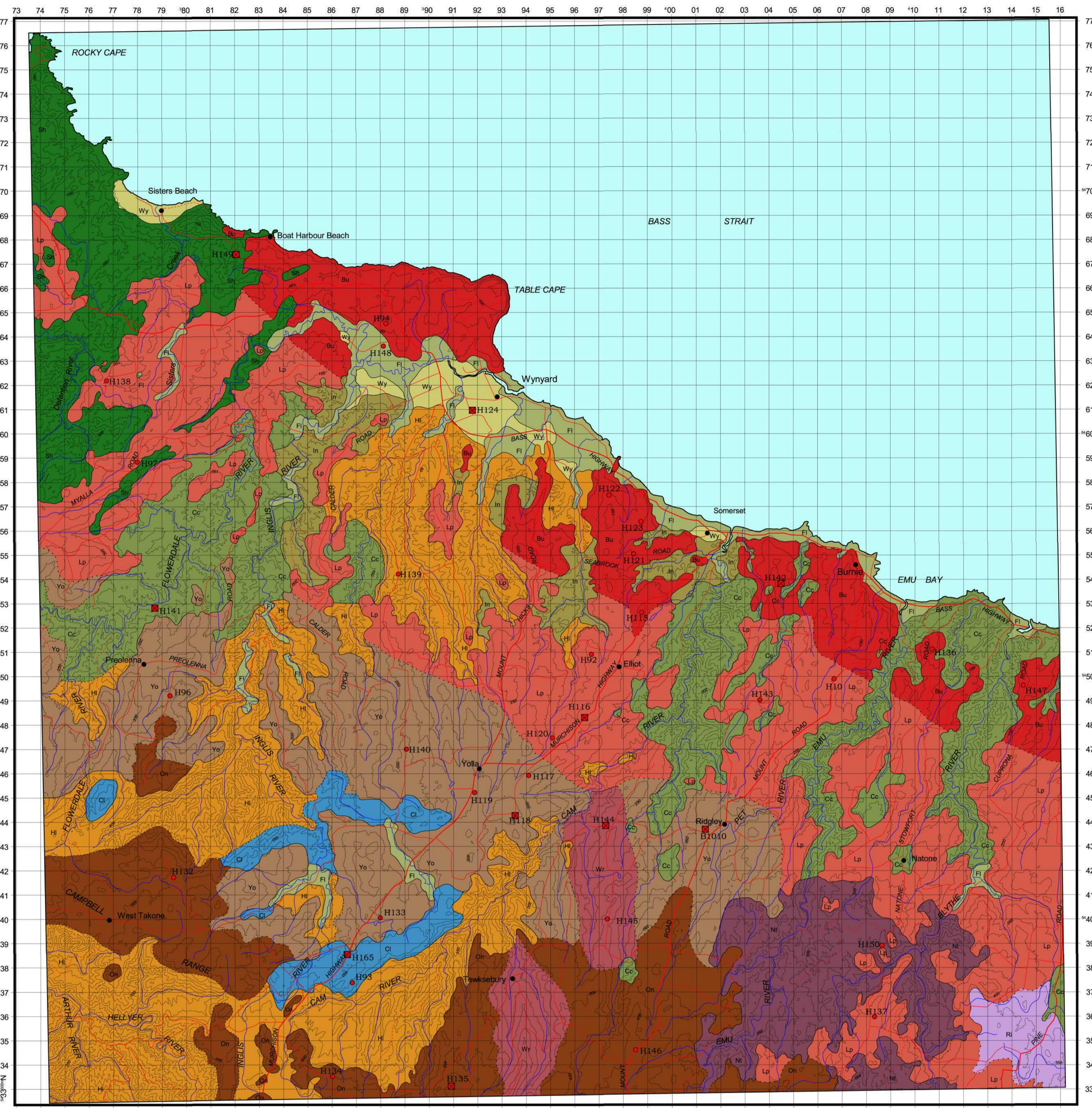


BURNIE-TABLE CAPE



Map Reliability
The original data was in Transverse Mercator Projection, with measurements in yards and elevation in feet. The map was subsequently converted to AMG via an undocumented procedure. Some soil boundaries and soil survey sites digitised from the original CSIRO reconnaissance soil maps contain appreciable error inherent from the source maps.

SCALE 1:100000



Soil Boundaries
 — Well defined
 - - - - - Interpreted from air photos
 ······ Broad transition
 ● Laboratory reference sites for identified dominant soils
 ■ Type profiles for associated minor soils

SOIL LEGEND

MAP UNIT	OLD CSIRO CODE	MAP UNIT CONCEPT	AUSTRALIAN SOIL CLASSIFICATION FOR DOMINANT SOIL	GREAT SOIL GROUP FOR DOMINANT SOIL	SOIL PROFILE CLASS FOR DOMINANT SOIL	MAP UNIT	OLD CSIRO CODE	MAP UNIT CONCEPT	AUSTRALIAN SOIL CLASSIFICATION FOR DOMINANT SOIL	GREAT SOIL GROUP FOR DOMINANT SOIL	SOIL PROFILE CLASS FOR DOMINANT SOIL
SOILS ON BASALT											
Bu	Burnie Association	B	Ferrosol	Krasnozem	Burnie SPC	Ri	Riana Association	R	No data available	No data available	No data available
Lp	Lapoinya Association	L	Ferrosol	Krasnozem	Lapoinya SPC	Sh	Sisters Hills Association	SH	Rudosol	Lithosol, siliceous sand	Sisters Hills SPC
Yo	Yolla Association	Y	Ferrosol	Krasnozem	Yolla SPC	Cc	Cam Association	C	Kurosol	Yellow podzolic	Cam SPC
On	Oonah Association	O	Ferrosol	Krasnozem	Oonah SPC	Hi	Hellyer Association	H	Insufficient data	Insufficient data	Insufficient data
Wr	West Ridgely Association	WR	Ferrosol	Krasnozem	West Ridgely SPC	In	Inglis Association	I	Insufficient data	Insufficient data	Insufficient data
SOILS ON DOLERITE											
Cl	Calder Association	Cd	Ferrosol	Krasnozem	Calder SPC	Wy	Wynyard Association	W	Podosol	Podsol	Woolnorth SPC
SOILS ON GRANITE											
Nt	Natone Association	N	Insufficient data	Insufficient data	Insufficient data	Fi	Flowerdale Association	F	Dermosol	Prairie soil	Flowerdale SPC
SOILS ON GRANITE AND BASALT											
SOILS ON QUARTZITE											
SOILS ON SCHISTS											
SOILS ON TILLITE AND SHALES											
SOILS ON QUARTZ GRAVEL AND SANDS											
SOILS ON SANDY MARINE &/OR ESTUARINE DEPOSITS											
RECENT ALLUVIAL SOILS											

MAP USERS NOTE

The information on this map is based on the original field work of J. Loveday & R.N Farquhar, CSIRO Division of Soils, Adelaide. The map has been updated and reprinted by the Tasmanian Department of Primary Industries, Water and Environment. Some soil boundaries or map unit codes may differ from the original map. No attempt has been made to determine the reliability or accuracy of this map. The Crown, in the right of the State of Tasmania, does not accept any responsibility for any loss or damage which may result to any person arising from reliance on all or any part of this information, whether or not that loss or damage has resulted from negligence or any other cause.

The map provides an appraisal of the soil distribution based on landforms, climate and geology. The soil boundaries have been delineated through aerial photo-interpretation and limited field work. Although the original map was surveyed at a scale of 1:126 720 (1 inch:2 mile), it has been reprinted at a scale of 1:100 000. This map should not be enlarged and should be used in conjunction with the Burnie-Table Cape soil report which gives additional information for the soil map units described below.

Original work by J. Loveday & R.N Farquhar
Updated by D. Kidd & S. Spanswick

Refer to this map as:
Kidd D & Spanswick S., (2000) Revised Burnie-Table Cape Reconnaissance Soil Map of Tasmania. Department of Primary Industry Water & Environment.

© Department of Primary Industries, Water & Environment, Tasmania, 2000

Acknowledgments

Soils surveyed by J. Loveday & R.N Farquhar, (1958). CSIRO Division of Soils, Adelaide.

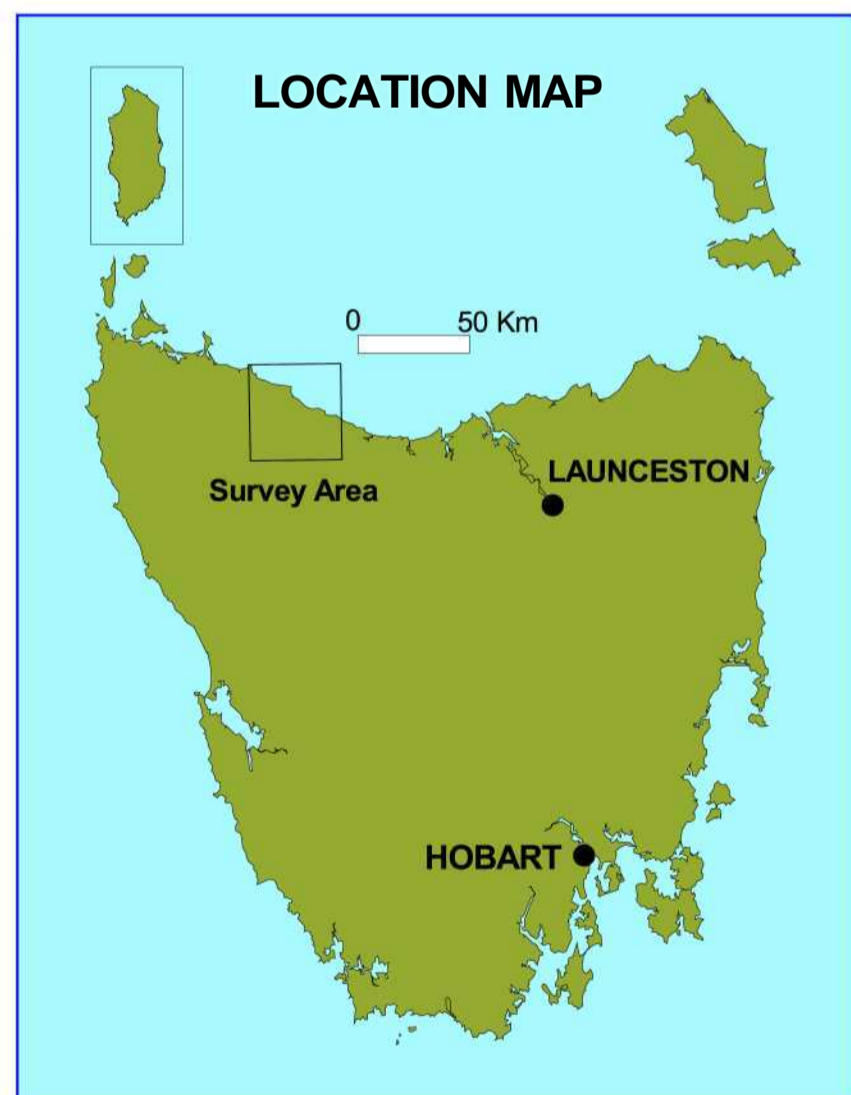
Soil data correlated by D. Kidd and S. Spanswick (2000).

Soil map digitised by J. Farrell (1993/1994). G.I.S by T. Davidson (2000). Map design and layout by T. Davidson (2000).

Base map data supplied by Land Information Services, Department of Primary Industries Water and Environment, Tasmania.

Contour interval: 50 metres

Projection: Universal Transverse Mercator



RECONNAISSANCE SOIL MAP SERIES OF TASMANIA

BURNIE - TABLE CAPE

TASMANIA

1:100000