

EDITION 12 • MAY 2016

Online ISSN: 1837-994X

location *matters*

LandTasmania

A point of reference for Tasmanian Land Information



Department of
Primary Industries, Parks, Water and Environment





This newsletter is designed, written, edited and produced by **Land Tasmania**, a Division of the Tasmanian Department of Primary Industries, Parks, Water and Environment (DPIPWE).

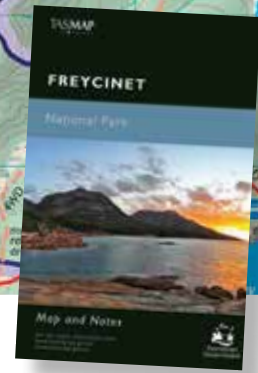
location matters aims to keep clients and members of the community informed about new developments and progress with existing projects, as well as introduce you to staff and the work they do.

Please take a few minutes to provide feedback or ideas for future issues by completing the short questionnaire at www.dpipwe.tas.gov.au/locationmatters

An electronic version of this publication can be found at:

www.dpipwe.tas.gov.au/locationmatters

The new edition of Freycinet National Park Map – available for purchase from Service Tasmania shops, TASMMap resellers and agents, and online at www.tasmap.tas.gov.au



Message from the GM



On behalf of **Land Tasmania**

I welcome you to the 12th edition of our biannual newsletter *location matters*, showcasing developments in land and spatial related information in Tasmania.

The first half of 2016 has been a very busy time for **Land Tasmania** staff with significant deployments and support provided for the Government's response to the long running fire operations that commenced in January and affected areas of North West Tasmania and the Tasmanian Wilderness World Heritage Area.

You can read more about some of the support for emergency services using the Common Operating Platform (COP) on page 3-4. Other support included automated generation of 1:50 000 topographic maps over the affected areas, preparation of statistical information and making available satellite imagery in preparation for recovery operations.

At a national level, as part of the Prime Minister's innovation initiatives, the Geocoded National Address File (G-NAF) has been released as a free download under open data terms through the Commonwealth Government data portal - data.gov.au. **Land Tasmania** contributes

This publication has been printed on Revive Pure Silk, which is 100% recycled and is certified carbon neutral. It is manufactured process chlorine free (PCF) by an ISO 14001 certified mill.

address geocode information on a weekly basis for integration into G-NAF. Releasing G-NAF under open data terms will remove barriers to greater use of the data, and unlock and create opportunities for innovation and competitiveness across many sectors.

The Tasmanian Spatial Information Council (TASSIC) held an Executive Forum in December last year focussing on "Unlocking Tasmania's Economic Future using Spatial Information". The forum was thought provoking and well received.

TASSIC has selected 2016 to focus on the use of spatial information in local government. Following a presentation to general managers in George Town in March, TASSIC has been invited by the Local Government Association of Tasmania (LGAT) to run a workshop at the July Local Government Conference in Hobart. This will be followed by a TASSIC forum for the wider local government community in November in Launceston, to be opened and attended by the Minister for Local Government and Treasurer, Peter Gutwein. More details about these forums will be available closer to the date.

I hope you enjoy reading this edition of *location matters*.

Robert Cockerell
General Manager, **Land Tasmania**

CONTENTS

Message from the GM	2
Your photo on your TASMMap	3
1:50 000 digital state-wide coverage	3
COP provides spatial framework for bushfire response	4
New dual Aboriginal place names assigned	6
Introducing Tim Grant Valuer-General	6
Tasmania preparing for PEXA	7
News in brief	8
New TASMMap products	8

Cover image

One of the winning photos from the recent
Your photo on your TASMMap competition.

Richea Scoparia in bloom, Cradle Mountain -
Lake St Clair National Park by Brendan Gogarty.



Find us at AGFEST

Fifth Avenue, Site 503-505

This year's display will feature:

- Advances with Precision Agriculture
- LISTMap focusing on Enterprise Suitability
- A walk-on map floor featuring TASMMap's new 1:50 000 Topographic Map Series.

Your photo on your TASMMap

TASMMap has introduced a competition calling on its map users to submit cover photos for upcoming National Park and Recreation Maps. The first round of the competition, involving the Freycinet and Cradle Mountain-Lake St Clair National Park Maps, has been run and won with the latest editions now produced with the winning images.

From a large range of entries, Arwen Dyer with her *Sunset at Freycinet National Park – beautiful evening light at Honeymoon Bay* (above) and Brendan Gogarty with *Richea Scoparia in Bloom – Cradle Mountain-Lake St Clair National Park* (cover image), were the deserving winners.

The latest round of the competition is now open for the South Coast Walks Map and Notes.

For competition details, please visit:
www.tasmap.tas.gov.au/do/category/NPCOMP

Follow the competition and other news on the TASMMap Facebook page:
www.facebook.com/Tasmap



Brendan Gogarty and Arwen Dyer, inaugural winners of the TASMMap photo competition.

1:50 000 digital state-wide coverage

Land Tasmania strives to generate quality mapping products derived from continuously maintained digital data in very short timeframes. Our goal is digital coverage of the entire state at 1:50 000 mapping scale in the coming months.

These practical digital products combine accurate and up-to-date spatial data themes produced by **Land Tasmania** with intelligent processes and complex data manipulation.

During the volatile bushfire season across Tasmania in the first part of 2016, **Land**

Tasmania provided on-demand, current and accurate digital mapping at 1:50 000 scale to support the fighting and management of the fires, often with an extremely short turnaround.

We have definitely come a long way. Previously a map could take months to complete, but in most cases a digital map can now be produced within a day. Thirty-three digital maps have now been completed.

The digital products are being introduced incrementally to the TASMMap eShop for purchase at www.tasmap.tas.gov.au/do/category/50000DIG.



For a demonstration, find us at AGFEST - Fifth Avenue, Site 503-505.

COP

provides spatial framework for bushfire response

Near-drought conditions

and a wave of dry lightning storms combined to produce a series of devastating bushfires across Tasmania in mid-January this year. Major blazes were identified immediately but, as other significant fires became apparent, the emergency response quickly exceeded the capacity of local agencies. Requests to interstate and international agencies for assistance resulted in an influx of teams from as far away as New Zealand and a tent city was established to house an additional 250 firefighters at Stanley.

With so many firefighters unfamiliar with the local environment, the need for a coordinated approach to situational awareness was critical. Enter the ideal tool for the task, Tasmania's web-based Common Operating Platform (COP). It provided the framework for ingest and



Active fire along the southern edge of the Mawbanna fire.

dissemination of information of a spatial nature, building the spatial picture of planning, response and recovery activities.

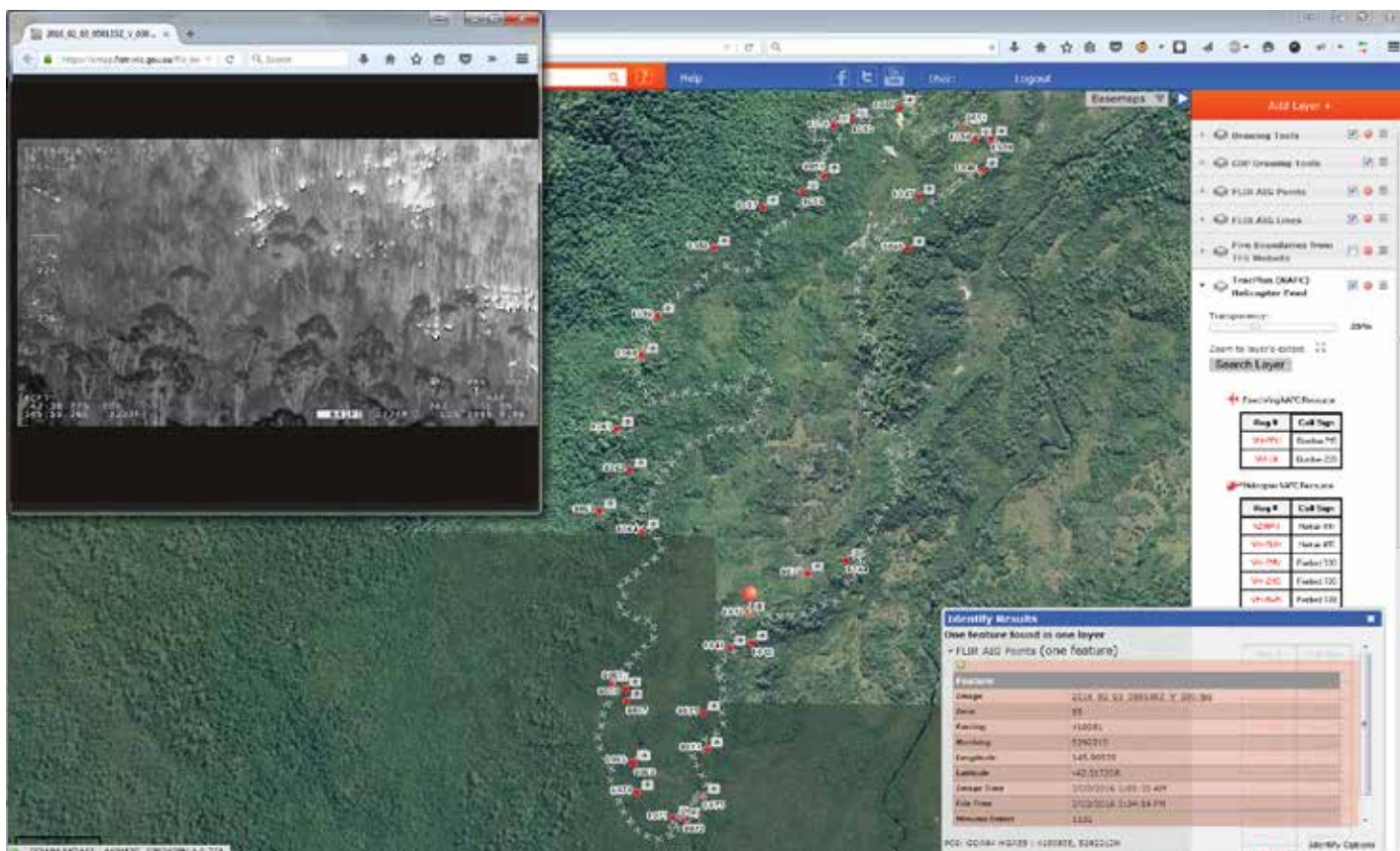
The refined and enhanced COP was used across all emergency operation centres this year including Incident Management Teams, Regional Fire Operations Centres, the State Fire Operations Centre, Tasmania Police Operation Centres and the State Crisis Centre. Previously-established data-sharing protocols ensured local and interstate personnel had immediate access

via the COP to timely and authoritative situational awareness to support their decision making.

A key strength of the COP is its capability to consume data from disparate systems and applications.

During the bushfire response effort, incident data was integrated from a variety of sources including Forward Looking Infrared (FLIR) feeds from Victoria, Infrared Linescan imagery from Victoria, fire hotspot locations from Geoscience Australia's Sentinel portal, Rapid Eye satellite imagery and live feeds from emergency service organisations.

A significant volume of field data was captured using a range of technologies, including tablet and smart phone apps.



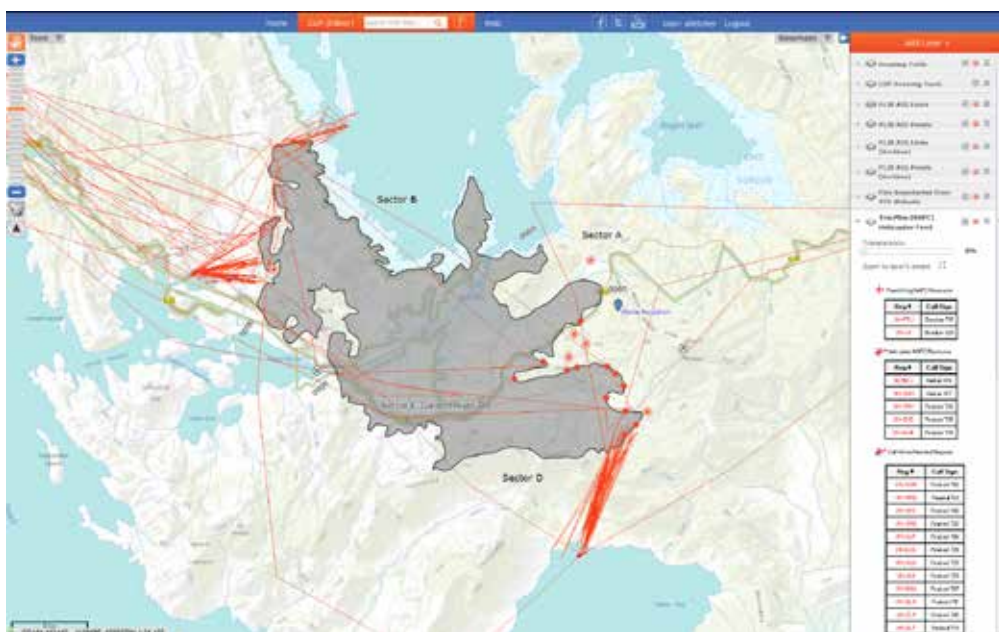
Victorian FLIR derived boundary and hotspots with thermal imagery, as shown in COP.



Rapid Impact Assessment was conducted using a pre-developed application configured by the Emergency Service GIS (ES GIS) team. The ES GIS team also configured an application to enable the capture of field data for rehabilitation purposes. Field data captured in this way feeds directly into the COP at the push of a button, helping to enhance the situational picture for other team members.

The development of the COP began in 2012 and its launch followed an extremely busy bushfire season causing widespread devastation, especially around Dunalley. Various debriefs following the Dunalley bushfires emphasised the requirement for a common situational awareness system across all agencies with emergency management responsibilities.

The COP continues to be developed and enhanced to improve its capabilities.



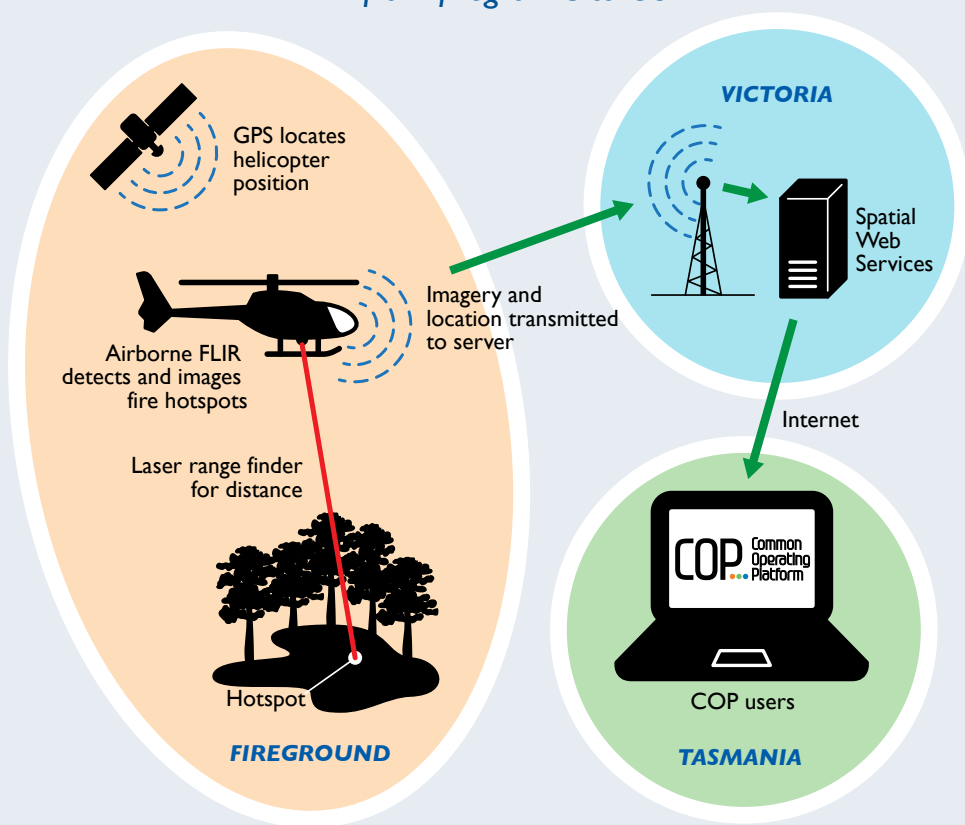
Operational information with live helicopter feed and fire boundary, as shown in COP.

Hunting for hotspots

During the 2015/2016 bushfire response, helicopter-mounted Forward Looking Infrared (FLIR) from Victoria assisted in the collection of fire ground intelligence. By combining the collection of FLIR imagery with a laser range finder and the Global Positioning System (GPS), the location of fire hotspots and active fire edge are sent from the in-flight helicopter back to Victoria and subsequently consumed into the COP via web-services.

The time from imagery capture to visualisation within COP can be as little as 20 minutes. This near real time intelligence collection capability enables incident management teams to make planning and operational decisions based on up to date, verified intelligence.

FLIR from fireground to COP



New dual

Aboriginal place names assigned

The Tasmanian Government's

Aboriginal and Dual Naming Policy was introduced in 2012 to provide a framework for the Aboriginal naming of geographic features and for existing named features to be given both an introduced and Aboriginal language name.

In August 2015, The Tasmanian Aboriginal Centre Inc (TAC) submitted an application to the Nomenclature Board of Tasmania for seven Aboriginal names to be approved for dual naming under this policy.

These were assigned under the provisions of the *Survey Co-ordination Act 1944* which allows for objections to be made and considered as part of the naming process.

These seven Aboriginal dual names became official on the 19th January 2016.

- wukalina - dual named with Mount William
- yingina - dual named with Great Lake
- titima - dual named with Trefoil Island
- laraturunawn - dual named with Sundown Point
- nungu - dual named with West Point
- taypalaka - dual named with Green Point
- pinmatik - dual named with Rocky Cape

There are now 13 Aboriginal names, 11 of which are dual named, that have been assigned under the Aboriginal and Dual Naming Policy. Dual names are to be represented on all official maps, documents, publications and signage in the required format, for example: wukalina / Mount William.

Introducing *Tim Grant* *Valuer-General*



Tim was appointed Valuer-General in November 2015 after nearly 12 months acting in the position following Warrick Coverdale's resignation.

Tim has had a long career in the government valuation area after joining the Lands Department in 1980 as an assistant valuer based in Devonport. He advanced through the ranks until he was appointed Senior Valuer North West in 1995. During the 1990s the Office of the Valuer-General was split into the statutory area, OVG, and the operational area, Government Valuation Services (GVS), in response to the amendments to the Valuation of Land Act. Between 2000 and 2006 Tim was State Manager of GVS.

Tim is a keen sailor in both dinghies and keelboats, competing in four Sydney to Hobart yacht races. He also enjoys bushwalking with a highlight being walking the South Coast Track with his son in 2012.

Tim plays an active role in the Australian Property Institute, the professional body representing valuers in Australia. He continues as a member of the Divisional Board and has had a term as State President.

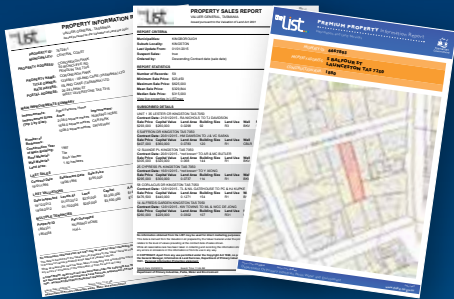


Find what you need!

Land Information
System Tasmania

the **List**

**Premium
Property Report**



Property information, sales and
statistics in a single report



Tasmanian
Government

www.thelist.tas.gov.au

Client Services contact details

Normal operating hours for all client enquiries are:

9.00am – 5.00pm Monday to Friday

LIST Helpdesk

E-mail listhelp@dipwe.tas.gov.au

Phone (03) 6165 4444

Web via the client request form

TASMAP

E-mail tasmap@dipwe.tas.gov.au

Phone (03) 6165 4444

Order online at www.tasmap.tas.gov.au

Spatial Data / Agreements / Copyright

Email listhelp@dipwe.tas.gov.au

Phone (03) 6165 4444

Tasmania

preparing for PEXA

Tasmania is gearing up

for the introduction next year of Property Exchange Australia (PEXA), an online property exchange that allows lawyers and conveyancers to electronically prepare, sign and lodge Land Titles Office documents, and complete financial settlement.

Financial settlement is completed through a secure process involving the transfer of funds from source accounts (eg ANZ Bank) via the Reserve Bank of Australia to destination accounts (eg CBA).

PEXA is used only by subscribers including lawyers, licensed conveyancers, financial institutions and government agencies.

Transactions that can be completed via PEXA are:

- A property sale involving (a) a discharge of mortgage, transfer and mortgage or (b) a transfer and mortgage
- A caveat or withdrawal of caveat and
- Refinance involving a discharge of mortgage and a new mortgage.

The transactions can be multi-party involving one or more conveyancers or solicitors and one or more financial institutions, or single party involving one solicitor or conveyancer.

PEXA is currently available in Victoria, New South Wales, Queensland and Western Australia. It is scheduled to be available in South Australia in May 2016 and in Tasmania in October 2017.

The Land Titles Office has implemented legislative, process and system changes in readiness for the introduction of PEXA.

The Tasmanian Online Land Dealings System (TOLD) was developed to facilitate electronic lodgement. Dealings lodged via PEXA will be captured in TOLD prior to being examined and registered.

The Tasmanian conveyancing industry's experience in using TOLD sees it well placed to quickly adapt to using PEXA.

While documents can be lodged electronically, they still require examination by the Land Titles Office to determine whether they can be registered.

Initially, a number of transactions will not be undertaken in PEXA and will require the current paper process.

The initial scope of transactions for use in PEXA excludes those that involve supporting evidence. It is possible that in the future these types of transactions will be included in an expanded scope for PEXA.

There are a number of transactions that will never be capable of being undertaken through PEXA due to their complexity and the amount of supporting evidence required, for example an adverse possession application.

The Land Titles Office will work closely with PEXA Ltd during 2016 to ensure that PEXA meets all of Tasmania's requirements and to identify whether any further legislative, process or system changes are required prior to the introduction of PEXA.





Above: A section of the new Visitors Map of Tasmania.

Walking the Tasman Peninsula

TASMAM has a brand new product to cater for Tasman Peninsula walkers and visitors. The A3 Peninsula Walks map covers all tracks on Cape Pillar, Cape Hauy and Cape Raoul, as well as the Lime Bay State Reserve and other popular peninsula walks including the Tasman Coastal Trail, Waterfall Bay, Tunnel Bay and Mount Brown.

With a unique new format, the Peninsula Walks map provides multiple map windows for maximum coverage while still folding to fit into your shirt pocket. Make sure you have the Peninsula Walks map for your next adventure. Download the digital version onto your mobile device for your complete Tasman Peninsula experience.



Transfer of Field Books to TAHO

In March 2016 approximately 8,000 Central Plan Office (CPO) Field Books were transferred to the Tasmanian Archives and Heritage Office (TAHO), LINC. All Field Books were digitised before being transferred and **Land Tasmania** holds the digital scans of these records. The Field Books range between 1840 and 1989. DPI/PWE staff can access multi page TIFF images of the books from internal servers. In April 2014, almost 2000 historic CPO flat plans were transferred to TAHO. Many of the Field Books transferred are directly associated to these plans. They are available to view on the LINC website.



Revaluations for 10 Municipal Areas 2016

Ten tenders valued at nearly \$2 million have been awarded for the 2016/17 Fresh Valuations in Tasmania. The successful tenderers are:

- LG Valuation Services Pty Ltd – Derwent Valley, Dorset, Flinders, Glamorgan Spring-Bay and Launceston
- Valuel Pty Ltd – Glenorchy, King Island, Sorell, Tasman, Waratah Wynyard

Preparatory work (Stage 1) is now underway for most municipalities to set the basis for consistent and fair valuations of properties. Actual property inspections are planned to commence around June/ July 2016 with new valuations issued to property owners and rate paying lessees in May 2017.

New TASMAM products

Recently released map products are now available for purchase online at www.tasmam.tas.gov.au or from Service Tasmania shops, TASMAM resellers and agents.

1:50 000 Topographic Maps

- Meadowbank
- Lake Pieman
- Ben Lomond
- Moulting Lagoon
- Western Arthur
- Tasman Peninsula
- Dogs Head Tier



National Park, Walk and Recreation Maps

- Peninsula Walks
- Freycinet National Park
- Cradle Mountain - Lake St Clair National Park



Tourist Products

- Visitors Map of Tasmania



NEW PRODUCTS

- DIGITAL DOWNLOADS

- National Park, Walk and Recreation Maps
- 1:50 000 Topographic Maps - 19 maps

Now available online at www.tasmam.tas.gov.au

Direct enquiries to

Manager - Client Services

Land Tasmania

GPO Box 44, Hobart, Tas 7001

T: (03) 6165 4444

E: geodata.clientservices@dpi/pwe.tas.gov.au

W: www.dpi/pwe.tas.gov.au/locationmatters

the **list**

www.thelist.tas.gov.au

TASMAP

www.tasmam.tas.gov.au