

location matters

LandTasmania

A point of reference for Tasmanian Land Information





This newsletter is designed, written, edited and produced by **Land Tasmania**, a Division of the Tasmanian Department of Primary Industries, Parks, Water and Environment (DPIPWE).

location matters aims to keep clients and members of the community informed about new developments and progress with existing projects, as well as introduce you to staff and the work they do.

Please take a few minutes to provide feedback or ideas for future issues by completing the short questionnaire at www.dpipwe.tas.gov.au/locationmatters

An electronic version of this publication can be found at:

www.dpipwe.tas.gov.au/locationmatters

The new edition of the Visitors Map of Tasmania – available for purchase from Service Tasmania shops, TASMMap resellers and online at www.tasmap.tas.gov.au



Message from the GM



Location continues to matter

Welcome to the 14th edition of *location matters* and my first as the General Manager of **Land Tasmania**. Having come from a GIS, spatial and information management background with more than 25 years experience in the sector, I firmly believe **location does** matter. It is fast becoming a critical component of emergency management and response, public policy development and decision making, infrastructure planning, and resource management. This is particularly the case within government where, in most cases, everything that occurs or is planned is located somewhere.

In this edition of *location matters* we will be focusing on showcasing the power of LISTmap, which on face value is a fairly simple mapping website but underneath provides some very powerful functionality that can help users across a wide range of sectors. I certainly use it on a daily basis and I would encourage you, if you haven't used LISTmap or explored its functionality, to have a look.

This edition also reports on the redevelopment of **Land Tasmania's** aging valuation system (VISTAS). This is an exciting project for the Division that will provide great opportunities to improve and streamline property related processes across **Land Tasmania**. The redevelopment will also be underpinned by the same mapping and web services that support LISTmap and also other websites within government, including TasALERT and iPlan.

In the next edition of *location matters*, due in November, we will focus on the expanding use of location information in non-traditional 'GIS/mapping' sectors, particularly in support of public policy development and decision making.

I hope you find this edition of *location matters* informative and interesting.

Stuart Fletcher
General Manager,
Land Tasmania

CONTENTS

Message from the GM	2
Work begins on national datum update	3
Winning photograph for the new Mount Anne Walk map	3
View, create and share your customised maps	4
VISTAS replacement project is underway	6
TASSIC appointments	6
Southern Accommodation Project – Lands Building refurbishment	7
Cash no longer accepted at Land Titles Office	7
News in brief	8
New TASMMap products	8

Cover image

Mount Anne from *Lots Wife*, by Becca Lunnon, the latest winner of TASMMap's 'Your Photo on Your Map' Competition. Read the full story on page 3.



Work begins

on national datum update

Australia is moving

at a rate of roughly 7cm per annum in a north-easterly direction. This isn't something to worry about – every continent is floating on the hot liquid underneath. But over the past 23 years, this shift has moved Australia around 1.5 metres to the north-east.

Changes like these create a discrepancy between local and global coordinates and the satellites we use to measure and define them. For this reason a nationally coordinated working group has begun modernising Australia's national datum.

In recent months, the GDA modernisation implementation working group has overseen a period of heightened activity. While the transformation parameters and national distortion grid are in the process of finalisation pending release, other implementation activities and communication projects are ramping up.

The first of these is the release of the Datum Modernisation Animation, commissioned by the implementation group to describe in simple terms what the project is all about. It has been designed to allow surveyors and spatial experts to assist with their clients' understanding of the implications of datum modernisation. A Tasmanian company was chosen to undertake the animation work, which can be found on the ICSM website

www.icsm.gov.au/gda2020/index.html

In February this year an online moderated forum was launched to cater for people interested in specific elements of the project, and has been divided into sections catering for jurisdictional questions, technical questions and several other categories. The forum

<http://gda2020.invisionzone.com/> is monitored and responses are prepared in a timely way by a panel of experts depending on the nature of the queries.

Early feedback on the animation and the forum has been very positive, with some universities even using the animation as a prelude to their geodesy classes!



Stills from the datum animation.

Winning photograph for the new Mount Anne Walk map

TASMAP regularly runs a competition calling on map users to submit cover photos for upcoming National Park and Recreation Maps. The latest round of the competition involved TASMAP's new product, the Mount Anne Walk map.

Becca Lunnon's photo, Mount Anne from Lots Wife, was judged the winner. The photo was taken by Becca on what she described as a slightly ambitious solo day trip into Lots Wife, hampered by a recent snowfall.

The Mount Anne Walk map provides guidance on tackling the highest mountain in the south-west and the 19th highest in Tasmania. Located in the Southwest National Park, Mount Anne can be summited as a day walk or as part of a multi-day circuit walk that includes Lake Judd.

The latest round of the competition for the Mount Field National Park cover photo is now open for submissions.

Find all the information and entry details on the TASMAP website and Facebook page.

'Your Photo on Your Map' Competition winner, Becca Lunnon.



View, create and share your customised maps

LISTmap is a free and easy-to-use online map application that allows people to view, create and share their own customised maps of Tasmania maps.thelist.tas.gov.au

LISTmap was developed as part of the Spatial Information Foundations project, which developed spatial products and services to underpin better decision-making and economic growth in Tasmania.

Users can access LISTmap from a multitude of devices including desktops, laptops, tablets and smart phones with common modern browsers. While LISTmap will work on all tablets and phones it is currently optimised for iOS.

On entry into LISTmap, users are presented with a Topographic map of Tasmania. This basemap can be changed to a number of other Topographic and aerial imagery backgrounds, depending on the user's viewing preferences.

Navigating and zooming in LISTmap is made easy by using the mouse or the on-screen pan and zoom buttons – or, in the case of a tablet, via standard swiping techniques. Users can search by the name of a locality, place or feature, street address, property identifier or title reference.

LISTmap has hundreds of publicly-available authoritative layers of information about land, water, natural resources and our environment. Layers have been sourced from a range of custodians, including the Department of Primary Industries, Parks, Water and Environment, the Department of Premier and Cabinet, the Tasmanian Planning Commission, Mineral Resources Tasmania, the Department of Education, Private Forests Tasmania and TasNetworks. Map layers have a 'More Information' link enabling the user to find additional information about the layer they are viewing. This includes a summary of the layer, how the data was collected, its accuracy and the data custodian.

LISTmap also has a range of 'Tools'. Users can measure distances and areas, add their own text, point, line and polygon features

to the map (aka markup), print their maps and also link to Google StreetView. A particularly useful feature with the Tools options is the ability to create 'Bookmarks'. These allow users to save regularly-viewed layers into a Bookmark to refer back to at a later time, or to share maps they have created with others. See more in our 'Tips & Tricks' section.

LISTmap has comprehensive help documents available at

<http://listdata.thelist.tas.gov.au/public/outgoing/sif/listmaphelp.pdf>

and help videos at

www.youtube.com/user/gsbclientserv

The LIST is supported by a friendly Client Services team that is available business days between 9am and 5pm to answer your queries (see full contact details on Page 7).

Alternatively, come and see us at the 2017 AGFEST as part of the Department of Primary Industries, Parks, Water and Environment tent.

Are you a developer or advanced spatial data user?

Did you know LIST web services are available for you to directly connect your computer or web system?

To access the hundreds of layers directly through standard internet protocols go to <https://services.thelist.tas.gov.au>

To assist you, **Land Tasmania** has published an expansive Spatial Web Services user guide. To access it, simply go to the home page of the LIST www.thelist.tas.gov.au and select the 'Help' tab. You can also download it from http://listdata.thelist.tas.gov.au/public/outgoing/sif/LIST_Spatial_Web_Services_User_Guide.pdf

The user guide contains instructions and examples on how to connect to this vast library of information and covers the major GIS software solutions currently available.

Tips and Tricks for using LISTmap

In this example, LISTmap is being used to help plan the positioning of pivot irrigators on a property. The first step would be to open LISTmap at: maps.thelist.tas.gov.au

1. Search for the property

Locate your property by using the **'Search'** function at the top of the screen. This tab allows you to search for the name of a locality, place or feature, street address, property identifier or title reference.



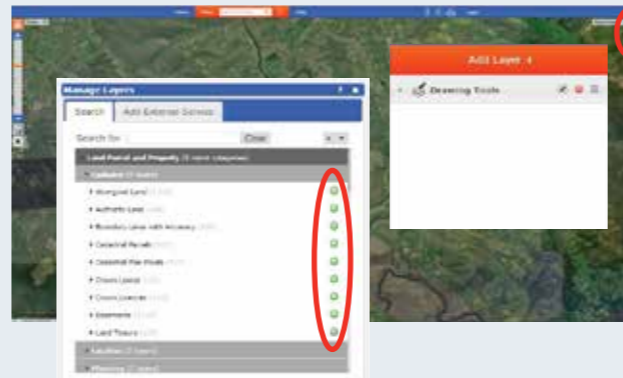
2. Discover the natural values

Select the **'Basemap'** tab (top right corner) to change the basemap to the State Aerial Photo to see the natural values of the property.



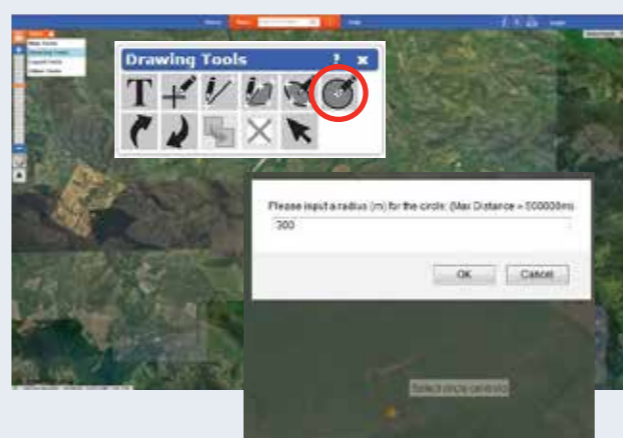
3. Additional layers of information

Select the **'Layers'** tab to add additional layers of information over your property, such as cadastral parcels, roads and hydrographic information.



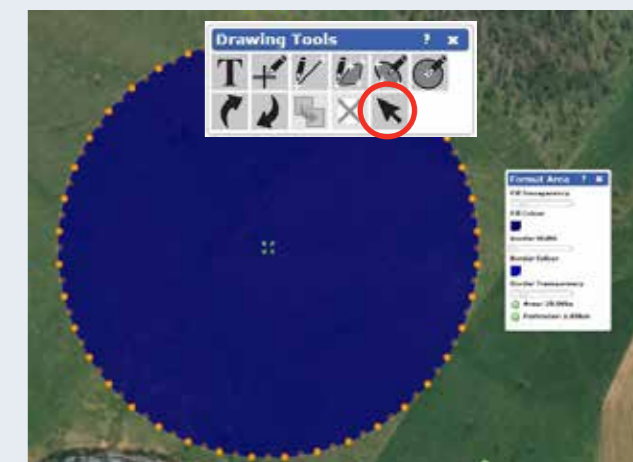
4. Add proposed features

To add the proposed pivot irrigator, hover over the **'Tools'** tab in the top left and then select **'Drawing Tools'**. From the Drawing Tools palette select **'Add a defined circle to the layer'** and click on your map where you want the centre of the proposed irrigator to be positioned. Type in a radius (in metres) for the circle and click **'OK'**.



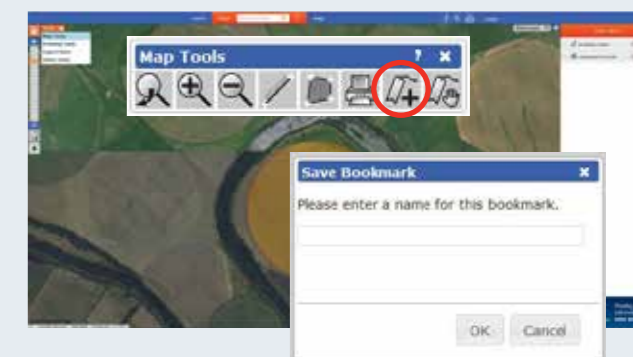
5. The finishing touches

Use the **'Select Features'** option from the Drawing Tools palette to change the position or amend the colour or transparency of the circle.



6. Don't forget to 'save'

Save your work in a bookmark to enable you to edit your map at a later time or to share the maps you have created with others. To save your map, hover over the **'Tools'** tab and then select **'Map Tools'**. From the palette, select **'Create a sharable bookmark'** and name your bookmark.



7. The benefits of bookmarks

To **edit** a bookmark, go to the Map Tools palette, select **'Open Bookmarks'** and then click on the bookmark name to open your saved map.

To **share** a bookmark with friends, go to the Map Tools palette, select **'Open Bookmarks'** and select a social media option.



VISTAS

replacement project is underway

Land tenure is an important part of Tasmania's social, political and economic structures. All aspects of land administration – including home ownership, land tax systems, local government ratings and economic developments – are impacted by the operations of the Office of the Valuer-General. This Office is responsible for providing and delivering uniform and consistent valuations across all 29 municipalities in Tasmania. As at January 2017, this consisted of 278,909 valuations with a capital value of \$96.7 billion.

Land Tasmania uses the Valuation Information System of Tasmania (VISTAS) to store property information, including property area, addresses, valuations, sales history and ownership information. The existing VISTAS system has served its

purpose well but is now at the end of its life, with increasing costs and maintenance complications leading to inefficiencies in its daily operation.

With a vision to develop a contemporary property information system – which provides an authoritative property and valuation register that underpins the framework for all Tasmanian land – the Office of the Valuer-General initiated a Request for Tender in 2016 for the re-development of its system. After an extensive procurement process, local Tasmanian IT company Geometry Pty Ltd was awarded the tender. Geometry Pty Ltd brings with it a strong record of delivering successful system integration solutions, including: Housing Tasmania's new Housing Management System; and, spatial systems such as LISTmap, which was delivered

as part of the widely-awarded Spatial Information Foundations Projects.

The new VISTAS replacement project was kicked off in January 2017 with the project team assembled and a scheduled delivery date of July 2018 confirmed. The new solution will be based on modern architecture and technologies that will address the limitations and maintenance issues of the existing system. This includes a new user interface and application that will enable the Valuers to work remotely and capture property information whether they are online or offline. It will incorporate all the valuation workflows to drive efficiencies and consistency in processes for valuations, capturing property information, and new reporting and analytic capabilities.

TASSIC *appointments*

The appointment

of Alan Smart as the new independent chair of the Tasmanian Spatial Information Council (TASSIC) was confirmed in November last year by the Minister for Primary Industries and Water, Jeremy Rockliff.

Alan is a director of ACIL Allen Consulting, an economic, public policy and public affairs management consultancy firm. He has extensive spatial industry experience as both a consultant and as chair of various industry bodies, and has been the lead on several major reports into the value of spatial information to the economy, both in Australia and overseas.

The other members of TASSIC have also been renewed, and the membership now comprises: Sophie Muller from the Department of Premier and Cabinet; Robert Driessen from the Surveying and Spatial Sciences Institute; Paul Digney

from SIBA (the Spatial Industries Business Association); Rachel Hurd from the University of Tasmania; Emily Brown from the Local Government Association of Tasmania; and Michael Giudici from the Department of Primary Industries, Parks, Water and Environment.

The Council held its first meeting in March this year and will be concentrating on drawing together a new strategic plan for the years 2017-2019.

TASSIC is an advisory body, and its role is to provide a forum for communication and collaboration across the sectors in the development of the Tasmania Spatial Data Infrastructure. By doing

so it aims to maximise the opportunities for government, industry and the community to leverage the potential of spatial information. It is envisaged that the implementation of the well-received TASSIC forums will recommence later in 2017.

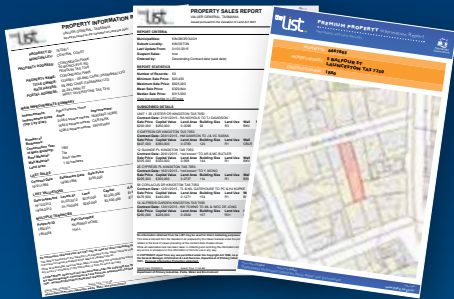
*Standing: Sophie Muller, Dr Rachel Hurd, Paul Digney.
Seated: Michael Giudici, Alan Smart (TASSIC Chair), Emily Brown.*



Find what you need!

Land Information
System Tasmania

the List Premium Property Report



Property information, sales and
statistics in a single report



www.thelist.tas.gov.au

Client Services contact details

Normal operating hours for all client enquiries are:

9.00am – 5.00pm Monday to Friday

LIST Helpdesk

E-mail listhelp@dpipwe.tas.gov.au

Phone (03) 6165 4444

Web via the client request form

TASMAP

E-mail tasmap@dpipwe.tas.gov.au

Phone (03) 6165 4444

Order online at www.tasmap.tas.gov.au

Spatial Data / Agreements / Copyright

Email listhelp@dpipwe.tas.gov.au

Phone (03) 6165 4444



SOUTHERN ACCOMMODATION PROJECT

Lands Building refurbishment

In 2016 the lease for DPIPWE to occupy the Lands Building was renewed, with the Lessor providing significant investment to refurbish the building, which was last refurbished in the 1990s. Refurbishment of the Lands Building is planned to commence in February 2018 and there is considerable emphasis on it becoming a digital focussed, paper light building.

Land Tasmania is custodian of a significant catalogue of paper records, many of which are still required for the conveyancing process in Tasmania. **Land Tasmania** has actively worked towards improving digital access to paper records since the early 1990s through innovations such as the Land Information System Tasmania. As part of this project, **Land Tasmania** continues that work and is now developing further strategies for providing access to these documents albeit with a reduced footprint in the Lands Building. Maintaining the effective operation of the Land Titles Office (LTO) and an equivalent level of access to

the records by its clients is at the forefront of the strategy development process.

Land Tasmania is currently investigating several options as part of this strategy including: the commercial digitisation of records; transferring records to the Tasmanian Archives and Heritage Office; and identifying LTO operation critical records to rehouse in the newly refurbished Lands Building. In developing a final strategy, **Land Tasmania** will engage with its stakeholders (including staff) to seek input to ensure the strategy maintains the effective operation of the LTO, leads to the optimal preservation of the historic records, and maintains access to the records equivalent to what is currently delivered to industry and the Tasmania community.

Stakeholder consultation is planned to commence in May 2017. For more information, please email Todd Baker, **Land Tasmania's** Acting Information and Program Manager, at: todd.baker@dpipwe.tas.gov.au

Cash no longer accepted at Land Titles Office

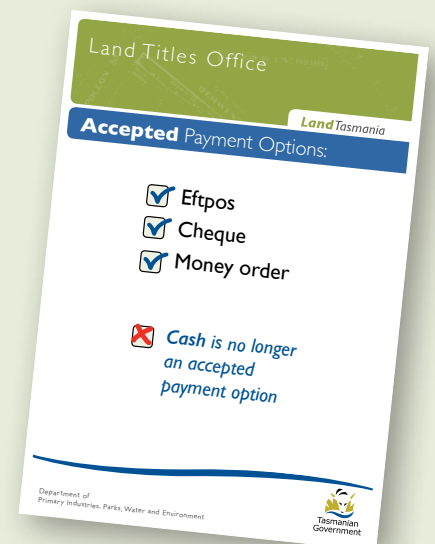
If you are planning

to visit the Land Titles Office, please be aware that cash is no longer being accepted for fees payable to that Office.

Payments can still be made either by EFTPOS using a debit or credit card, or by cheque or money order.

Please take care that cheques or money orders are made payable to the Recorder of Titles and are for the correct amount, as change can no longer be given or received.

More information regarding Land Titles Office fees can be found at the following webpage www.dpipwe.tas.gov.au/land-tasmania/land-titles-office/forms-and-fees/land-titles-office-fees





New Tasmanian Visitors Map now available in Chinese



TASMMap has just released the latest version of the Visitors Map of Tasmania. This comprehensive tourist map covers the entire State, featuring large-scale town and city maps and highlighting tourist features and services. The Visitors Map of Tasmania is perfect for planning your trip and locating Tassie's best activities and destinations.

This year, a Chinese language version of the map has also been produced in consultation with Tourism Tasmania. Aimed at the high number of Chinese tourists to visit Tasmania, the map features tourist information presented in Chinese, including specific road safety material promoted by Bobby the Bridestowe Lavender Bear, who is very popular in China.

Town Grant Chart layer is now live on LISTmap

Town Grant Charts have recently been added as a layer onto LISTmap under the Historic Maps and Charts category. Historically the Town Grant Charts were used by the Surveyor General to record the granting and alienation of land within Tasmania's original town areas. Land Grant information is depicted on these charts together with additional references relating to the gazettal, reservation, granting, acquisition and leasing of Crown Land. Withdrawn from operation during the 1990s, the charts have been individually scanned and georeferenced to the current digital cadastral boundaries. The Town Grant Charts join the Land District Grant charts on LISTmap to provide a complete set of grant chart information covering Tasmania.

Mapping and GIS Tools for accessing LIST data

Land Tasmania has created a set of mapping and GIS tools for use with Esri's GIS software product ArcMap (ArcGIS Desktop).

DPIPWE ArcMap Tools is a custom-built toolbar for ArcMap, originally developed in-house by **Land Tasmania** staff. This toolbar is now freely available to all ArcMap users in the Tasmanian mapping and GIS community.

DPIPWE ArcMap Tools provides users with a range of functions, including the ability to:

- quickly and easily add LIST data to ArcMap;
- search and zoom to locations in Tasmania; and
- automatically open LISTmap to the same location as ArcMap.

Please note that users will need to have already purchased and installed ArcGIS Desktop in order to use the tools.

DPIPWE ArcMap Tools is packaged as an ArcMap Add-In, and can be downloaded from: https://github.com/DPIPWE/DPIPWE_Tools_Addin/releases/latest

For more information, including help and download instructions, please go to: https://github.com/DPIPWE/DPIPWE_Tools_Addin



The New Norfolk Town Grant Chart, added as a layer onto LISTmap under the Historic Maps and Charts category.

Above: Detail of historic chart Glamorgan 10, showing Schoutens Island. Reproduction prints are available for purchase from www.tasmap.tas.gov.au

New TASMMap products

Recently released map products are now available for purchase online at www.tasmap.tas.gov.au or from Service Tasmania shops and TASMMap resellers.

1:50 000 Topographic Maps

- Lake Pedder
- Montagu River
- Douglas River
- Nicholas
- Legerwood

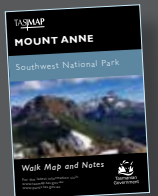


Tourist products

- Visitors Map of Tasmania Including a Chinese Language version

National Park, Walk and Recreation Maps

- Cradle Mountain – Lake St Clair (Waterproof)
- Lake St Clair Day Walks
- Mount Anne Walk - NEW PRODUCT



Historic Maps and Charts

- Glamorgan 10 Schoutens Island
- Pembroke 6 Maria Island
- New Norfolk 3 – May 1833
- Cornwall 51 Hundred of Launceston
- Ross 39 – c. 1833
- Heybridge 34A – May 1857
- Cornwall 63 – July 1862
- Pembroke 28 Wybellinna situated at Little Swan Port – July 1840

NEW PRODUCTS - DIGITAL DOWNLOADS

- National Park, Walk and Recreation Maps
- 1:50 000 Topographic Maps – complete coverage - Now available as a statewide coverage on USB drive.

Now available online at www.tasmap.tas.gov.au

Direct enquiries to

Manager - Client Services

Land Tasmania

GPO Box 44, Hobart, Tas 7001

T: (03) 6165 4444

E: geodata.clientservices@dPIPWE.tas.gov.au

W: www.dPIPWE.tas.gov.au/locationmatters

the **list**

www.thelist.tas.gov.au

TASMAP

www.tasmap.tas.gov.au