

# location matters

Land Tasmania

A point of reference for Tasmanian Land Information



A section of the upcoming South East Tasmania 1:250 000 map. Read the full story on page 4.





Detail of the newly released 1:50 000 Tasman Peninsula Edition 2 map. Now available for purchase from Service Tasmania shops, TASMAM resellers and online at [www.tasmap.tas.gov.au](http://www.tasmap.tas.gov.au)

This newsletter is designed and produced by **Land Tasmania**, a division of the Tasmanian Department of Primary Industries, Parks, Water and Environment (DPIPWE).

**location matters** aims to keep clients and members of the community informed about new developments and progress with existing projects, as well as introduce you to staff and the work they do.

Please take a few minutes to provide feedback or ideas for future issues by completing the short questionnaire at [www.dpipwe.tas.gov.au/locationmatters](http://www.dpipwe.tas.gov.au/locationmatters)

An electronic version of this publication can be found at:

[www.dpipwe.tas.gov.au/locationmatters](http://www.dpipwe.tas.gov.au/locationmatters)

## CONTENTS

Minister's message	2
Support for spatial users in adopting GDA2020	3
Mapping improvements that you won't even notice	3
Transformation of TASMAM's 1:250 000 series	4
Custom topographic maps for local firefighters	4
ES-GIS staff repay the favour interstate	5
Office solicitor: who we are and what we do	6
Aligning ANZLIC's strategic direction with current societal drivers	7
Place Names Bill enhances community representation	7
News in brief	8
New TASMAM products	8

# Minister's message

## Welcome to the 19th edition of location matters.

As I pen this article, the effect of the COVID-19 Virus is unfolding across the globe, and also here in Tasmania. Spatial information is once again critical to the response that the government has established, and **Land Tasmania** staff, including General Manager Stuart Fletcher who is coordinating the departmental response, have been identified as key resources to assist with this event.

While COVID-19 is impacting community life on almost every level, the key functions of government continue with **Land Tasmania** continuing to 'be open for business' despite some necessary changes in public interface. I thank all staff and **Land Tasmania** clients for their flexibility and professionalism during this time—it is appreciated and a part of what makes Team Tasmania so effective.

It would be remiss of me to not note the support provided by **Land Tasmania's** emergency services mapping staff to other states during the devastating bushfires on the mainland earlier this year. I know that their support and skills were very welcome as they shared experiences and skills built in our own state, including during last year's extensive bushfires.

While **Land Tasmania** continues to provide important services and skills during situations such as I have outlined, the necessary and important work of utilising and growing spatial information to help build Tasmanian industry and jobs continues.



In the last edition I reflected on the role that spatial information was playing in helping to grow the Tasmanian agricultural sector; and reported on the Digital Agricultural forum convened by TASSIC in November 2019. I have been pleased to note the subsequent follow-up to the forum by TASSIC Chair, Alan Smart, and the potential for the skills gaps illuminated by the forum to be addressed by industry and departmental partnerships.

I am constantly learning about the breadth of activities covered by **Land Tasmania**. A glance through the index should provide readers with a snapshot of those activities. From our iconic mapping series and specialty mapping products to the front line public engagement of the Land Titles Office, to the critical statutory valuation activities of the Office of the Valuer General, to the lead role being played in the implementation of Australia's new datum GDA2020 by surveying and GIS staff, the range of skills and activities is indeed diverse.

I hope you find this edition of *location matters* interesting and informative.

The Hon Guy Barnett MP  
Minister for Primary Industries and Water



# Support for spatial users in adopting GDA2020

## In December 2019

**Land Tasmania** opened a survey for industry and government spatial data users to ascertain the level of awareness and readiness for the adoption of GDA2020 in Tasmania. A very good response rate was achieved, with approximately 145 completed questionnaires submitted.

A key observation from the survey results was the number of respondents 'estimating' that the impact of GDA2020 on their systems and services would be low. While this may be the case, it is important that all users of spatial data and location services understand the changes being made to Australia's datum, and the impacts on their data, services and systems.

To assist with this, and based on data from all survey response data received, **Land Tasmania** released the first of a series of targeted communication products. This included a *GDA2020 Implementation Policy* document which articulates a series of clear statements about what **Land Tasmania** is doing to adopt GDA2020. A *Technical Issues Summary Paper* has also been prepared and will be issued to organisations and users to assist them to assess their requirements for adoption. The paper documents **Land Tasmania's** experience with technical upgrade and system adaptation as a guide for users and industry.

Interested parties can contact [listhelp@dPIPWE.tas.gov.au](mailto:listhelp@dPIPWE.tas.gov.au) for copies of documents if required. This package of information will be followed up by seminars later in the first half of the year. For more information on the Tasmanian adoption of the new datum go to: [www.dPIPWE.tas.gov.au/land-tasmania/datum-modernisation](http://www.dPIPWE.tas.gov.au/land-tasmania/datum-modernisation)



## Mapping improvements that you won't even notice



### With the introduction

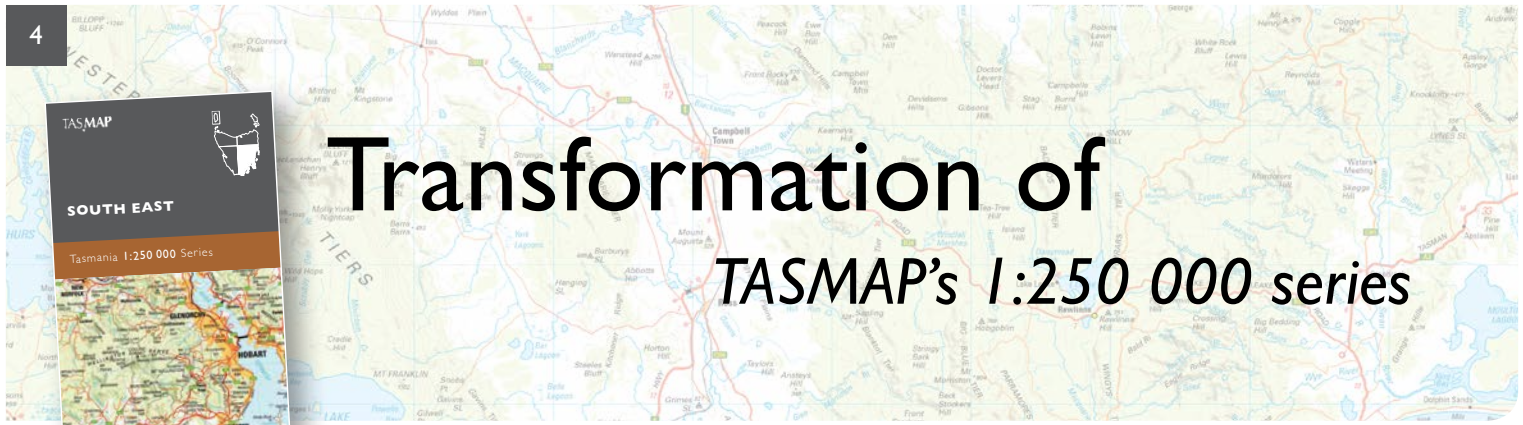
of GDA2020 as the new Australian datum, all new TASMMap maps are now published in GDA2020. But what does this mean for map users? Well, nothing to be honest. At map scale, the change is imperceptible.

For example on a TASMMap 1:50 000 topographic map, our largest scale mapping product produced, the difference between GDA94 and GDA2020 is less than 0.02mm on the map. This is much less than the smallest spec on a map and 10 times smaller than the average printed line. Users of TASMMap paper and digital products will not be affected by the change to GDA2020.



*Inset of 1:50 000 Wellington to scale, illustrating road line widths.*





# Transformation of TASMAT's 1:250 000 series



A section of the South East map features on the cover of this edition of location matters.

## The sixth edition

of the TASMAT 1:250 000 Topographic Map Series will be released shortly. The series has been given its first major makeover since its introduction in 1980 to bring it into line with contemporary mapping styles and techniques. This has led to the maps being easier to read and use, whether it be individually or as a joined set giving a statewide coverage.

Senior Spatial Information Officer Nick Bryce has been responsible for the transformation of the series. This has involved a complete audit of detail including nomenclature, road distances and transport features, and the addition of vegetation coverage.

The four new maps will be easily identifiable by their updated covers, which clearly establishes them as one of the high quality TASMAT range of products.

Keep an eye on the TASMAT e-shop at [www.tasmap.tas.gov.au](http://www.tasmap.tas.gov.au) for their release.



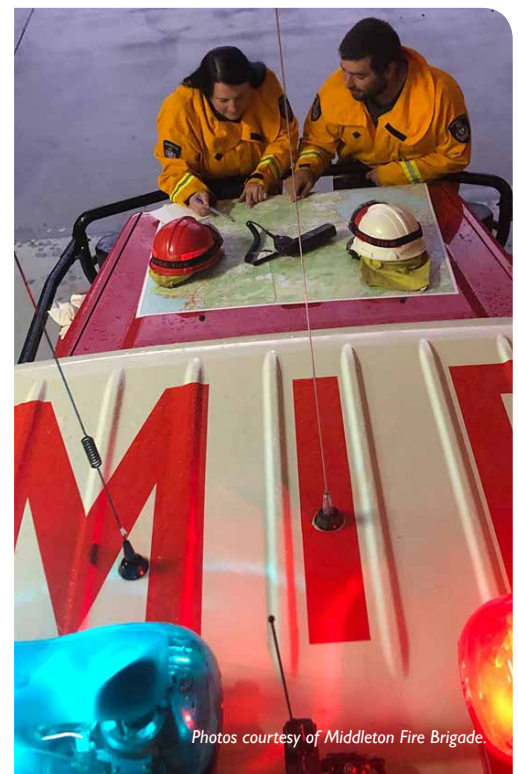
*“This has been a satisfying project to work on over the last four months,” Nick said.*

*“It was very interesting updating and redeveloping the new series specifications. I have had little input in this area previously, so it was personally a great learning opportunity for me.”*

## Custom topographic maps for local firefighters

### TASMAT recently

worked with the Middleton Volunteer Fire Brigade to produce a range of custom topographic maps for its station and trucks. Based on an enlargement of the TASMAT 1:50 000 Topographic Map series, and covering the Brigade's complete district, the maps are an invaluable tool in the coordination and planning of future incidents. So great were the benefits of the maps that TASMAT has since produced similar products for other Brigades, including the Deep Bay Volunteer Fire Brigade.



Photos courtesy of Middleton Fire Brigade.



# ES-GIS staff

## repay the favour interstate

Fire photos: Back burn operations undertaken while Parks staff were on deployment in New South Wales.

Photos courtesy of Linda Walker, Tasmania Parks and Wildlife Service.

### Australia will

remember the 2019/20 bushfire season as one of the worst on record with an estimated 18.6 million hectares burnt. During November and December, Peter von Minden and Bryn Roberts, from Emergency Services - Geographical Information Systems (ES-GIS), were deployed to the New South Wales Lower North Coast to assist in the bushfire response. Based out of Kempsey, approximately 50 km north of Port Macquarie, the two ES-GIS team members undertook mapping tasks and worked alongside counterparts from NSW, including the Rural Fire Service (RFS), National Parks and Wildlife Service, Forestry, the Environment Protection Authority, Police and various other interstate and international agencies. This multi-agency team was one of many operating in NSW as the state battled an estimated 5.4 million hectares of fire area, including the tragic loss of 25 lives and the destruction of more than 2,400 homes.

*“After being involved with numerous fires here in Tasmania, where we received assistance from our interstate and international counterparts, it was very rewarding to be in a position where I could return the favour,” Peter said. “It was also great to see some familiar faces from those campaigns and I would gladly offer my assistance again.”*

Operating interstate posed some challenges for ES-GIS. Among these were quickly becoming familiar with RFS' mapping

systems and processes in a high-pressure environment and then applying those skills as mapping team leader, as both Peter and Bryn were required to do shortly after arriving for their first deployments. They used their skills, experience and knowledge to utilise alternative intelligence sources previously unknown to the Kempsey Incident Management Team (IMT), such as Sentinel satellite imagery. This was used to fill a gap when field intelligence was unavailable, thus greatly enhancing situational awareness to support their operational decision-making. As team leaders they set about dividing tasks among their teams, and also provided training and mentoring, liaised with other functional areas to obtain intelligence in order to determine mapping requirements, and participated in higher-level discussions about information management.

Bryn said that putting in long hours became routine over the total of four weeks of deployment.

*“A lack of local knowledge, or trying to pronounce some of the place or road names, was often met with a small chuckle from those based in the area,” he said. “Despite some significant differences between the two states’ mapping processes and software, Peter and I were still able to transfer our skills and knowledge between jurisdictions and were encouraged to return for multiple deployments.”*



Below: Kempsey Incident Management Team (IMT) meeting, including up to 30 members at any one meeting.

Photo below courtesy of NSW RFS - Lower North Coast Team.



# Office solicitor: who we are and what we do



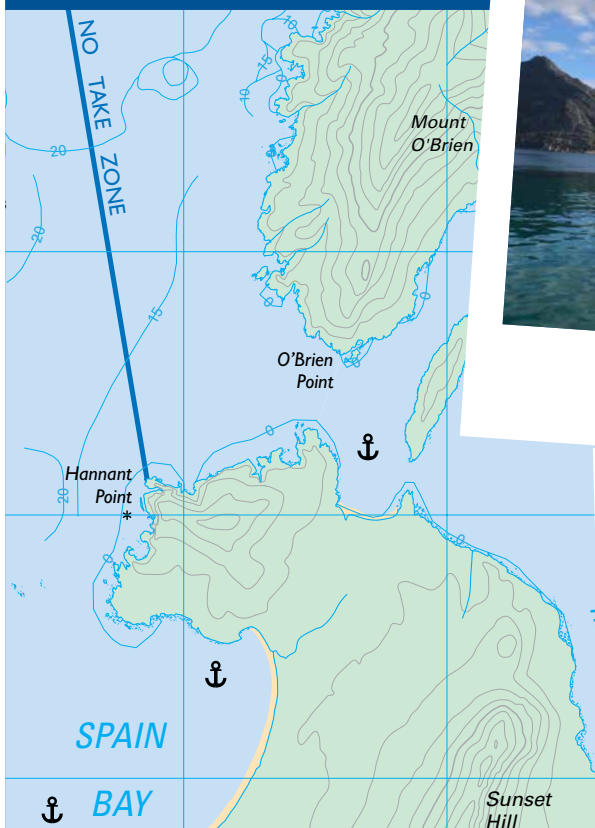
**Carey Higgins** joined the Land Titles Office (LTO) in October 2019 as the new office solicitor. Carey was admitted to practise as a Barrister and Solicitor of the Supreme Court of Tasmania in 2001, and she worked in private practice in Hobart for around 16 years. For two years, Carey was a manager and senior lawyer for a large Tasmanian Council, managing the legal, property and procurement portfolios.

*“I’m looking forward to utilising my career experiences,” Carey said, “in contributing to the goals and objectives of the LTO.”*

Carey has extensive experience in property and commercial law including conveyancing, property development, leases, trusts, company law, mortgages and securities, and also wills and estate planning.

A member of the Law Society of Tasmania Council since 2014, Carey is also a past Chair, and a member since 2010, of the Pro-Bono Clearing House. She is a current member of the Tasmanian Women Lawyers Committee, the current Chair of the Continuing Professional Development Committee, and a past member of the Property and Commercial Law Committee. For almost 15 years Carey was a member of the Committee of Management of the Hobart Community Legal Service Inc, including serving several terms as President.

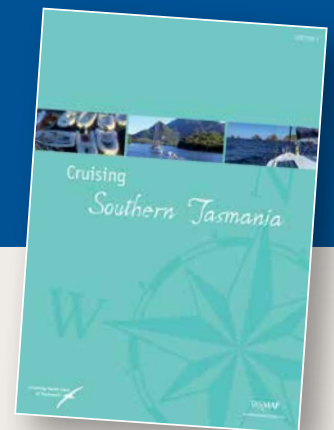
## An updated guide to Cruising Southern Tasmania



Wineglass Bay  
Photo by David Mitchell



Claytons Corner  
Photo by Andrew Boon



### A new edition of

Cruising Southern Tasmania, which includes extended coverage from Wineglass Bay to Port Davey and Bathurst Harbour, has just been released.

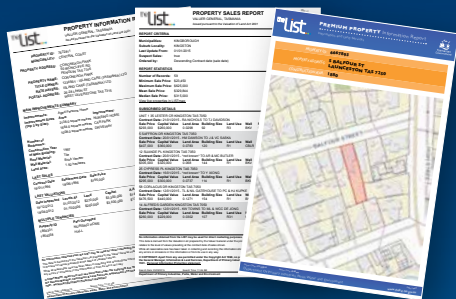
The Guide includes detailed information regarding anchorages, boat ramps, navigation aids, marine farms, jetties, hydrographic contours and soundings. Also shown are hazards such as reefs, rocks, kelp, mudflats and shallow water, along with shore-based services of interest such as fuel, shops and toilets.

Cruising Southern Tasmania is a valuable tool for both cruising and trailer boat owners. It is available for purchase from Service Tasmania shops, TASMAR resellers and online at [www.tasmap.tas.gov.au](http://www.tasmap.tas.gov.au)



## Land Information System Tasmania

### the List Premium Property Report



Property information, sales and statistics in a single report



[www.thelist.tas.gov.au](http://www.thelist.tas.gov.au)

#### Client Services contact details

Normal operating hours for all client enquiries are:

9.00am – 5.00pm Monday to Friday

#### LIST Helpdesk

E-mail [listhelp@dpiptwe.tas.gov.au](mailto:listhelp@dpiptwe.tas.gov.au)

Phone (03) 6165 4444

Web via the client request form

#### TASMAP

E-mail [tasmmap@dpiptwe.tas.gov.au](mailto:tasmmap@dpiptwe.tas.gov.au)

Phone (03) 6165 4444

Order online at [www.tasmmap.tas.gov.au](http://www.tasmmap.tas.gov.au)

#### Spatial Data / Agreements / Copyright

Email [listhelp@dpiptwe.tas.gov.au](mailto:listhelp@dpiptwe.tas.gov.au)

Phone (03) 6165 4444

# Aligning ANZLIC's strategic direction with current societal drivers

## The Australia and

New Zealand Land Information Council (ANZLIC) has completed a significant review of its strategic direction and this will culminate in the delivery of a new Strategic Plan 2020-24, to be launched in late April. The Plan aligns ANZLIC activities with the key current societal drivers: sustainable city and regional development; efficient and effective government service delivery; reduced natural disaster and climate impacts on people, property and the environment; safe and secure water resources; healthy, resilient and biodiverse natural environments; more productive, efficient and safe built infrastructure; economic growth and digital innovation, and; thriving, diverse and inclusive communities. The Plan then proceeds to articulate the spatial sector priority areas that are needed to deliver those societal outcomes.

The Intergovernmental Committee on Surveying and Mapping (ICSM) is a permanent committee of ANZLIC and is

in effect the delivery, implementation and technical arm for the ANZLIC strategy. ICSM recently met in Hobart to deliberate on how to align its working groups and structures to better deliver the ANZLIC strategy. ICSM has traditionally operated with a series of permanent committees that in general terms align with many of the Foundation Spatial Data Themes. The Hobart meeting resolved to reform and rename these committees to better reflect their work focus and instill new leadership structures to drive activity and accountability. This restructure now allows ICSM to focus on the roadmap for delivery of the ANZLIC strategy. To facilitate a closer working relationship between ICSM and ANZLIC, the executive of both groups met recently to explore and agree on key priority activities, and to be explicit about the relationship between the two entities. This was a very successful meeting and foreshadows a need for more regular coordination of communication actions.

# Place Names Bill *enhances community representation*

A new Place Names Bill was passed by the Tasmanian Legislative Council in March 2020 following passage through the Lower House in late 2019. The Bill provides for more contemporary place naming processes, and is accompanied by a revised version of the Tasmanian Place Naming Guidelines.

The new Bill empowers local government as the relevant authority for the majority of road naming. Other initiatives include the replacement of the existing Nomenclature Board with a Place Names Advisory Panel that is more representative of community. Consultation and advertising provisions

have also been enhanced and, for the first time, penalty provisions have been included for the deliberate misuse of place names.

Placenames Tasmania, the existing place names database, is formalised as the Register and a new Registrar will be appointed to maintain it. **Land Tasmania** looks forward to working with the new regime, which will significantly improve administrative flexibility.

The Bill will receive Royal Assent later in 2020 and commence on a date yet to be selected.

# News in brief...

## Applying the benefits of spatial information

Following on from last year's LIST survey and workshops, the Tasmanian Spatial Information Council (TASSIC) has completed its report on future potential requirements of LIST data and services and has submitted its report to the DPIPWE to inform future planning for the next generation LIST.

In November 2019, TASSIC convened a forum focussing on the use of spatial information in Digital Agriculture, with attendance from across government and industry bodies. The forum elevated several key challenges and opportunities for the sector to address, including the gap in skills that can translate between technology and on-farm application. An example given was having technicians available to configure variable rate irrigators to apply treatments to specific paddock areas based on spatially-rich farm plans. TASSIC has been following up on some of these themes by talking to farmers and agricultural consultants. It is hoped that supplementary extension programs can be assembled for delivery into the graduate agronomist cohort within the 2020 year.

TASSIC is also planning future workshops, the first of which will be focussed on the use of spatial information to support regional development. TASSIC is partnering with the Cradle Coast Authority to deliver the forum and it is expected that speakers will deliver presentations on 'Digital Twins', and smart city economies.

TASSIC is aiming to develop a further forum focussed on the education sector and how different teaching institutions complement and overlay on the delivery of spatial information content.

## How to meet with LTO staff during office renovations

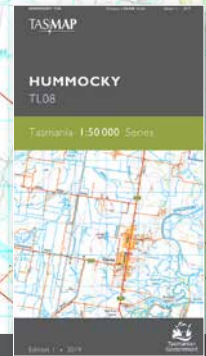
The Lands Building at 134 Macquarie Street, Hobart, is undergoing a full renovation. Works to the Land Titles Office (LTO) on the first floor are expected to start later in the year with an expected completion date scheduled toward the end of 2020.

The LTO is working on ways to ensure people can still contact staff when required. As plans are finalised, more information will be provided via [www.dpipwe.tas.gov.au/land-tasmania/land-titles-office](http://www.dpipwe.tas.gov.au/land-tasmania/land-titles-office)

If you have any questions, please feel free to contact the LTO on (03) 6165 4444.

## Reviewing the Strata Titles Act

The strata environment in Tasmania is changing and it is anticipated that future strata developments will be more common and more complex. Strata ownership continues to grow and with approximately 36,397 strata lot titles within Tasmania, it represents 10.02 per cent of land ownership. It is therefore timely that the *Strata Titles Act 1998* (the Act) is under review. The next stage of consultation has commenced with the development of a draft discussion paper. The draft paper identifies 18 areas of focus and encourages feedback on those focus areas or any other aspect of the Act. A reference group consisting of key strata industry stakeholders is being established. The reference group will assist with finalisation of the paper prior to its public release in the second quarter of 2020. At the end of the consultation period a consultation report will be prepared for the Minister for Primary Industries and Water, including any proposed amendments. For more information on the Strata Titles Act review, go to: [www.dpipwe.tas.gov.au/stratatitles](http://www.dpipwe.tas.gov.au/stratatitles)



**1:50 000 Hummocky** - now available for purchase from Service Tasmania shops, TASMAT resellers and online at [www.tasmap.tas.gov.au](http://www.tasmap.tas.gov.au)

## NEW TASMAT PRODUCTS

Recently released map products are now available for purchase online at [www.tasmap.tas.gov.au](http://www.tasmap.tas.gov.au) or from Service Tasmania shops and TASMAT resellers.

### 1:50 000 Topographic Maps

- Hummocky
- Boobyalla

### Coming Soon

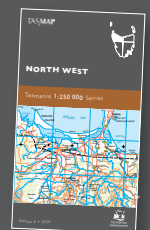
- The Nut
- Mount William



### 1:250 000 Topographic Maps

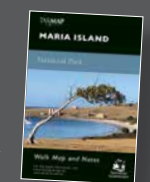
#### Coming Soon

- North West
- North East
- South West
- South East



### National Park, Walk and Recreation Maps

- Cradle Mountain – Lake St Clair National Park Map
- Maria Island Walk Map
- Hartz Mountains Day Walk



### Tourist Products

- Cruising Southern Tasmania

## POPULAR PRODUCTS

### Digital downloads

- National Park, Walk and Recreation Maps
- 1:50 000 Topographic Maps – complete coverage - Now available as a statewide coverage on USB drive.

Now available online at [www.tasmap.tas.gov.au](http://www.tasmap.tas.gov.au)

### Direct enquiries to

Manager - Service Delivery

**Land Tasmania**

GPO Box 44, Hobart, Tas 7001

T: (03) 6165 4444

E: [listhelp@dpipwe.tas.gov.au](mailto:listhelp@dpipwe.tas.gov.au)

W: [www.dpipwe.tas.gov.au/locationmatters](http://www.dpipwe.tas.gov.au/locationmatters)

GDI 1688

the **list**

[www.thelist.tas.gov.au](http://www.thelist.tas.gov.au)

**TASMAP**

[www.tasmap.tas.gov.au](http://www.tasmap.tas.gov.au)