

LONGFORD

MAP USERS NOTE

The information on this map is based on the original field work of K.D Nicolls, CSIRO Division of Soils, Adelaide. The map has been updated and reprinted by the Tasmanian Department of Primary Industries, Water and Environment. Some soil boundaries or map unit codes may differ from the original map. No attempt has been made to determine the reliability- or accuracy of this map. The Crown, in the right of the State of Tasmania, does not accept any responsibility for any loss or damage which may result to any person arising from reliance on all or any part of this information, whether or not that loss or damage has resulted from negligence or any other cause.

The map provides an appraisal of the soil distribution based on landforms, climate and geology. The soil boundaries have been delineated through aerial photo-interpretation and limited field work. Although the original map was surveyed at a scale of 1:63 360 (1 inch:1 mile), it has been reprinted at a scale of 1:100 000. This map should not be enlarged and should be used in conjunction with the accompanying soil report which gives additional information for the soil map units described below.

Original work by K.D. Nicolls
Updated by S. Spanswick & P. Zund

Refer to this map and the accompanying report as:
Nicolls, K.D. (1958) Reconnaissance soil map of Tasmania. Sheet 47 - Longford. CSIRO Div. of Soils, Divisional Report 14/57. (Revised by S. Spanswick & P. Zund (1999) Department of Primary Industry Water & Environment).

© CSIRO Division of Soils, Adelaide

Acknowledgments

Soils surveyed by K. D. Nicolls, 1958. This map incorporates, with minor revisions, data from surveys by G. D. Hubble (1944 & 1947), G.D. Hubble & K. D. Nicolls (1947), J. Loveday (1952) and Stephens *et al* (1942).

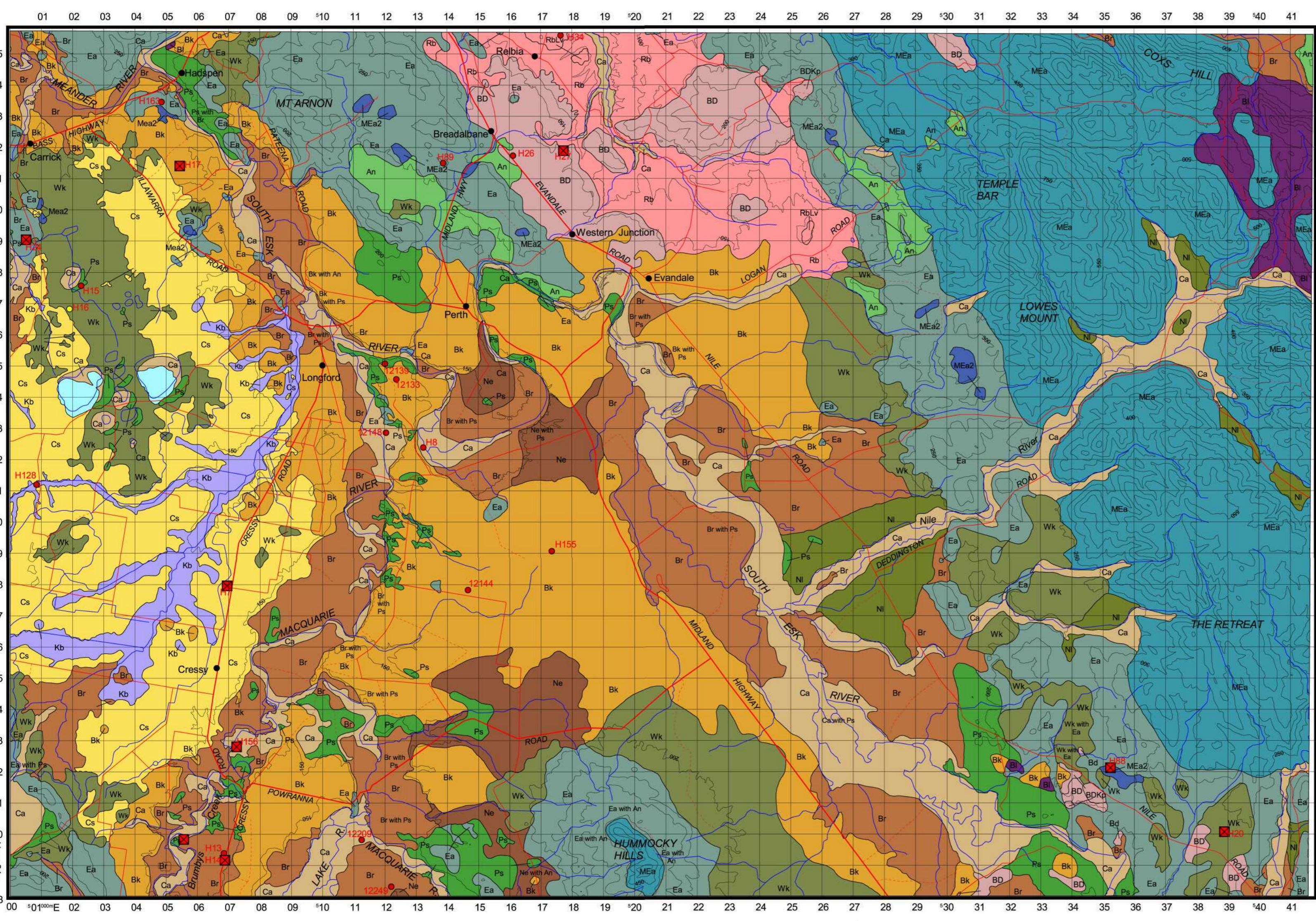
Soil data correlated by S. Spanswick and P. Zund (1998/1999).

Soil map digitised by J. Farrell (1993/1994).
G.I.S by A. Large and T. Davidson (1998/1999).
Map design and layout by T. Davidson (1999).

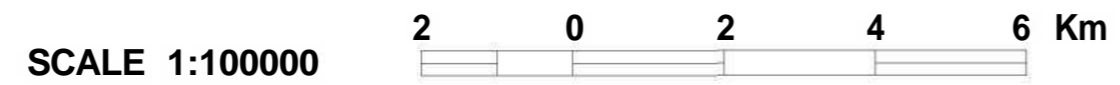
Base map data supplied by Land Information Services, Department of Primary Industries Water and Environment, Tasmania.

Contour interval: 50 metres.

Universal Transverse Mercator Projection.



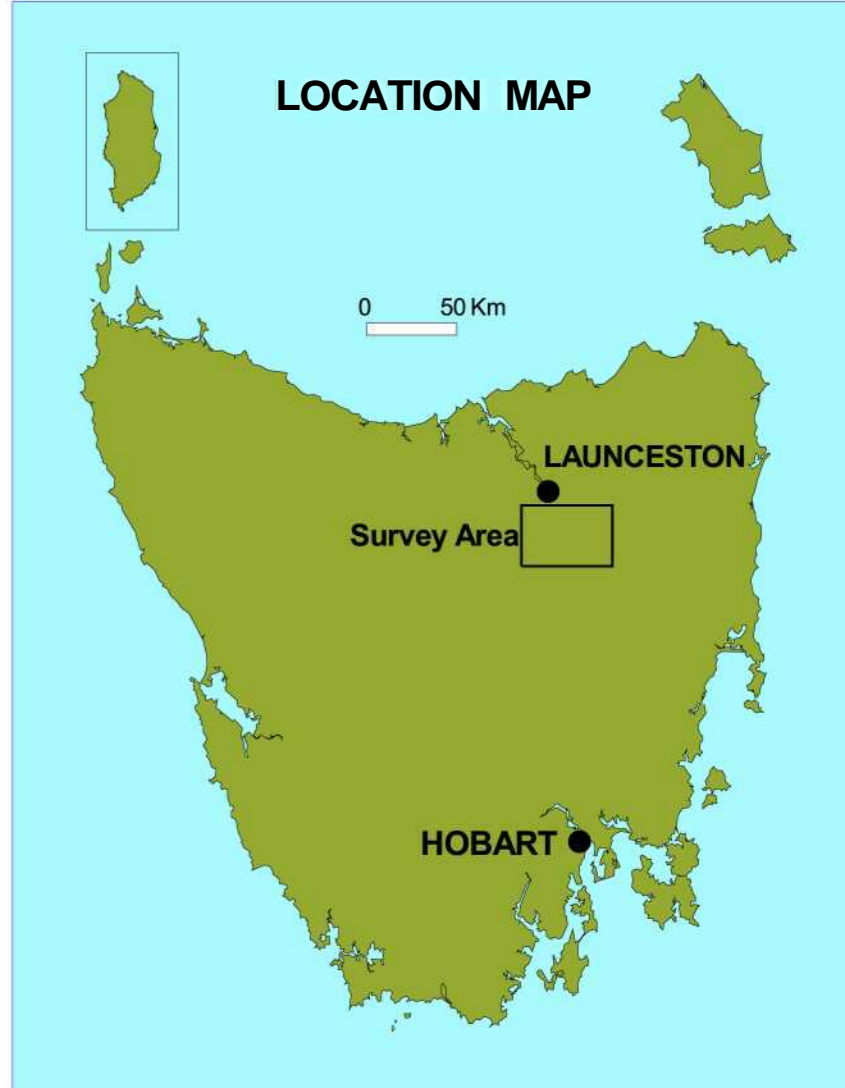
Map Reliability
The original map was compiled from contour data with the North Eastern corner of the map compiled from aerial photographs taken in 1947. Due to the inadequacy of ground control in the North East of the map, co-ordinates of points read from this area are liable to have appreciable error.



- Laboratory reference sites for identified dominant soils
- Type profiles for associated minor soils

SOIL LEGEND

| MAP UNIT | MAP UNIT CONCEPT | AUSTRALIAN SOIL CLASSIFICATION FOR DOMINANT SOIL | GREAT SOIL GROUP FOR DOMINANT SOIL | MAP UNIT | MAP UNIT CONCEPT | AUSTRALIAN SOIL CLASSIFICATION FOR DOMINANT SOIL | GREAT SOIL GROUP FOR DOMINANT SOIL |
|----------------------------------|--|--|---|--------------|-----------------------------|--|--------------------------------------|
| SOILS ON DOLORITE | | | | | | | |
| Ea | Eastfield Association | Sodosol | Grey podzolic soil, brown, podzolic soil | Wk | Woodstock Association | Kurosol | Lateritic podzolic soil |
| MEa | Miscellaneous Soils Related to the Eastfield | Chromosol | Grey podzolic soil, brown podzolic soil | Cs | Cressy Association | Dermosol | Lateritic podzolic soil |
| MEa2 | Miscellaneous Soils Related to the Eastfield 2 | Ferrosol | Lateritic grey podzolic soil, brown lateritic podzolic soil | Bk | Brickendon Association | Chromosol | Lateritic podzolic soil |
| SOILS ON BASALT | | | | | | | |
| Bd | Breadalbane Association | Dermosol | Non-calcic brown soil, brown, earth, euzoem | Ne | Newham Association | Chromosol | Yellow podzolic soil |
| BdKp | Breadalbane Krasnozem Phase | Ferrosol | Krasnozem | Br | Brumby Association | Sodosol | Solodized solonetz, solodic soil |
| SOILS ON SANDSTONE | | | | | | | |
| Bl | Blessington Association | Sodosol | Yellow podzolic soil, solodic soil | Rb | Relbia Association | No data available | No data available |
| SOILS ON MUDSTONE | | | | | | | |
| An | Amon Association | No data available | No data available | RbLv | Relbia Lateritic Variant | No data available | No data available |
| SOILS ON AEOLIAN DEPOSITS | | | | | | | |
| Ps | Panshanger Association | Tenosol | Siliceous sand | Nl | Nile Association | Vertosol | Rendzina |
| | | | | Ca | Canola Association | Vertosol | Black earth, wiesenboden, chernozem |
| | | | | Ca-Ps | Canola - Panshanger Complex | Vertosol | Black earth, wiesenboden, chernozem. |
| | | | | Kb | Kinburn Association | No data available | No data available |



**RECONNAISSANCE SOIL
MAP SERIES OF
TASMANIA**

LONGFORD

TASMANIA

1:100000

